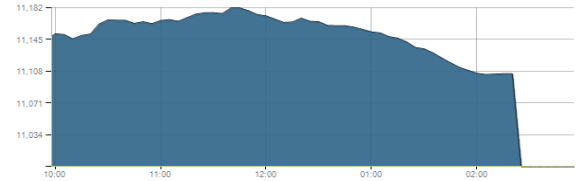


Indices intraday trends

EGX 30

مؤشر EGX 30
اليوم - 16/09/2021

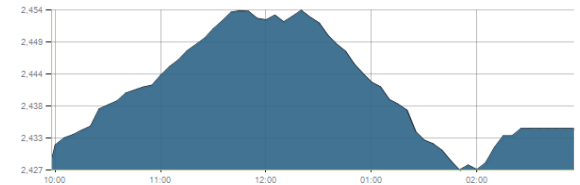


Key Levels

Support 1	10950-10850	Resistance 1	11200
Support 2	10680	Resistance 2	11430

EGX 50 EWI

مؤشر EGX 50 EWI
اليوم - 16/09/2021

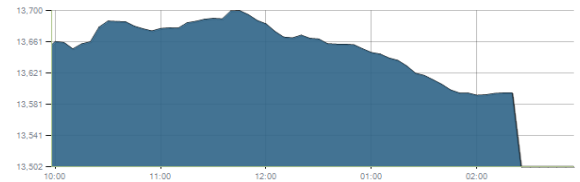


Key Levels

Close		2434.34	
Support 1	2385	Resistance 1	2450
Support 2	2310	Resistance 2	2560

EGX 30 capped

مؤشر EGX 30 Capped
اليوم - 16/09/2021



Key Levels

Close		13501.76	
Support 1	13400	Resistance 1	13800
Support 2	13130	Resistance 2	14140

Market Commentary:

The EGX30 witnessed a downward move led mainly by the CIB while most of the stocks remained flat. Yet levels are still the same so everything is in place.

Trading flat within the mentioned levels is still expected where we may conservatively use for quick trades keeping close stops. Yet, levels are still the same and so for our outlook, the upside expectations will only be by clearing 11200.

It is very important to watch any violated stop to avoid any further decline while new positions are advised to wait for a confirmed buy signal to react safely on.

Close	10996.76	Trend	Up-Corr.
Pre. Close	11149.36	Target 1	—
Change	↓ 152.60 (1.37%)	Target 2	—
Day's range	11182.69 — 10994.45	Stop-loss	10680
52week's high	11675.69	52week's low	9769.18.18

Disclaimer

- This publication has been prepared by Blom Egypt Securities for information purposes only.
- It is not intended as an offer to buy or sell or a solicitation of an offer to buy or sell the securities mentioned.
- The information & opinions in this publication were prepared by Blom Egypt Securities research department accepts no liability or legal responsibility for losses & damages incurred arising from the use of this publication or its contents.

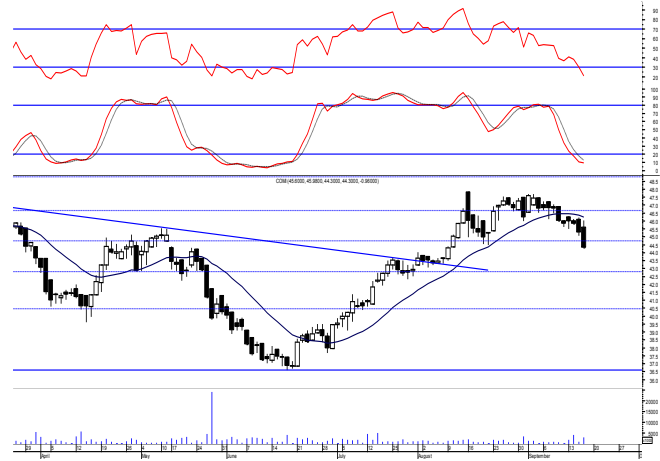
Blom Egypt Securities
Samir M. Azmi, CFTe, CETA
Senior Technical Analyst
samir.azmi@blomsecurities.com



Commercial international bank (COMI.CA):

Prices fell sharply below the support level 44.70 which still needs confirmation as the violation took place in the auction while flat trading dominated most of the session. We recommend staying on cash watching the coming support level 44.70 where we may open new trades on but should be supported by confirmed positive signals to react safely on.

Support levels: 44.70, 42.30
Resistance levels: 46.65, 48.80

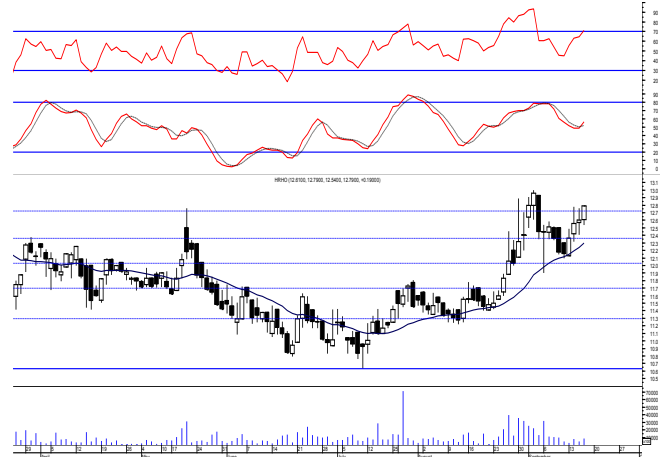


Hermes Holding (HRHO.CA):

Prices remained narrowly mostly flat as quiet trading performance dominated before jumping sharply in the auction closing slightly above the mentioned resistance zone which still need confirmation so levels are considered the same and so for our outlook.

Existing positions are advised to hold keeping stops placed and respected below 11.25 as any decline below will give back the hand to selling party.

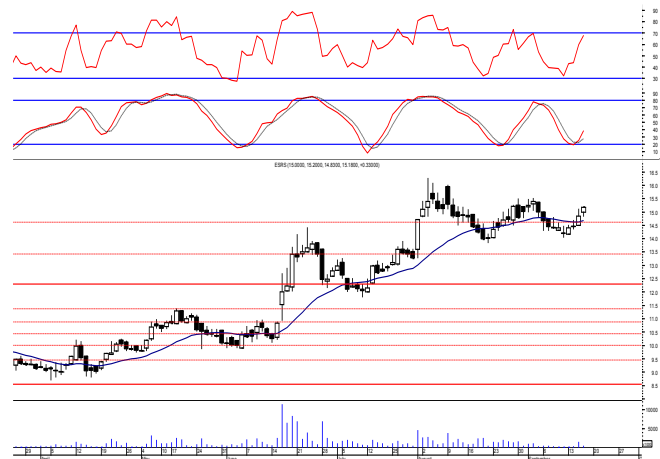
Support levels: 12.10, 11.70
Resistance levels: (12.60-12.75), (13.25-13.40)



El-Ezz steel rebar's' (ESRS.CA):

Prices witnessed a sharp upward move in the auction after trading mostly above the mentioned resistance zone closing slightly above. Confirmation is still needed to turn the mentioned zone into support so everything is considered in place. As we said, our Protective stop should be activated as reaching the previous reached low is expected near 13.80 any may extend reaching our support level 13.40. New trades are advised to wait for a confirmed buy signal to react safely on.

Support levels: 13.40, 12.30
Resistance levels: (14.40-14.65), 16.00



Disclaimer

- This publication has been prepared by Blom Egypt Securities for information purposes only.
- It is not intended as an offer to buy or sell or a solicitation of an offer to buy or sell the securities mentioned.
- The information & opinions in this publication were prepared by Blom Egypt Securities research department accepts no liability or legal responsibility for losses & damages incurred arising from the use of this publication or its contents.

Blom Egypt Securities
Samir M. Azmi, CFTe, CETA
Senior Technical Analyst
samir.azmi@blomsecurities.com



Most active Stocks

Daily Technical Analysis Report

19 Sep, 2021

Stock Name (Reuters' Code)	Close	Trend	T1	T2	Support	Resistance	SL	Triggers	
								Lower	Upper
Building Materials & Construction									
Arabian cement (ARCC.CA)	4.49	Bearish	—	—	4.10	4.60	—	—	—
El Ezz Steel Rebar's (ESRS.CA)	15.18	Dn.-Corr.	—	—	13.40	14.65	11.40	—	—
GB auto (AUTO.CA)	4.10	Dn.-Corr.	—	—	3.95	4.20	3.75	—	—
Orascom construction (ORAS.CA)	70.61	Dn.-Corr.	—	—	70.00	71.70	68.50	—	—
South Valley Cement (SVCE.CA)	2.26	Dn.-Corr.	—	—	2.20	2.47	1.95	—	—
Elsweddy Cables (SWDY.CA)	8.65	UP-Corr.	—	—	8.65	9.15	7.90	—	—
Upper Egypt general contracting (UEGC.CA)	0.777	Dn.-Corr.	—	—	0.765	0.79	0.73	—	—
Chemicals									
Abu-Qir fertilizers (ABUK.CA)	18.59	Up-Corr.	—	—	18.30	19.70	18.30	—	—
Egyptian Financial & Indust. (EFIC.CA)	13.56	Dn.-Corr.	—	—	12.85	14.00	12.85	—	—
Egyptian chemical industries-Kima (EGCH.CA)	4.31	Dn.-Corr.	—	—	4.20	4.47	4.20	—	—
Communications									
Fawry for banking tech. & electronic payment (FWRY.CA)	16.51	Up-Corr.	—	—	16.45	16.90	15.45	—	—
Orascom investment holding (OIH.CA)	0.265	Dn.-Corr.	—	—	0.25	0.278	0.192	—	—
Telecom Egypt (ETEL.CA)	14.75	Dn.-Corr.	15.20√	16.60	14.30	15.70	12.90	—	—
Financial Services									
Abu Dhabi International Bank (ADIB.CA)	14.40	Up-Corr.	—	—	13.65	14.75	13.65	—	—
Arabian for investments & development (AIH.CA)	0.49	Up-Corr.	—	—	0.485	0.517	0.403	—	—
Amer holding group (AMER.CA)	0.848	Up-Corr.	—	—	0.825	0.87	0.78	—	—
Commercial International Bank (COMI.CA)	44.30	Dn.-Corr.	—	—	44.70	46.65	42.30	—	—
Export development bank of Egypt (EXPA.CA)	10.69	Dn.-Corr.	—	—	10.55	11.00	9.90	—	—
Holding Companies									
Citadel capital (CCAP.CA)	1.203	Up-Corr.	—	—	1.16	1.23	1.09	—	—
Hermes Holding (HRHO.CA)	12.79	Dn.-Corr.	—	—	12.10	12.75	11.25	—	—
Kuwaiti Holding (EKHO.CA)	1.17	Bullish	1.13√	1.19	1.15	1.23	0.96	—	—
MM group for industry & international trade (MTIE.CA)	7.72	Dn.-Corr.	—	—	7.30	7.80	7.30	—	—
Orascom financial holding (OFH.CA)	0.281	Dn.-Corr.	—	—	0.275	0.31	0.275	—	—
Pioneers holding (PIOH.CA)	6.02	Dn.-Corr.	—	—	5.75	6.10	5.45	—	—
Housing & Real Estate									
Egyptian For Tourism Resorts (EGTS.CA)	2.24	Dn.-Corr.	—	—	2.10	2.37	1.95	—	—
Elshams housing (ELSH.CA)	11.49	Up-Corr.	—	—	10.00	12.10	10.00	—	—
Emaar holding (EMFD.CA)	2.63	Dn.-Corr.	—	—	2.65	2.845	2.28	—	—
Heliopolis housing & development (HELI.CA)	5.60	Dn.-Corr.	—	—	5.55	5.90	4.85	—	—
Medinet Nasr for housing & Deve. (MNHD.CA)	2.98	Up-Corr.	—	—	2.90	3.05	2.90	—	—
6th. October Deve. Inv. (OCDI.CA)	18.75	Bullish	19.25	20.40	18.55	19.25	16.90	—	—
Palm hills development Co. (PHDC.CA)	2.041	Bullish	2.03√	2.11√	2.03	2.11	1.60	—	—
Talaat Mustafa group holding (TMGH.CA)	7.45	Bullish	8.20	8.90	7.50	8.00	6.90	—	—
Mining & Gas									
Alexandria Mineral Oils Co. (AMOC.CA)	3.50	Dn.-Corr.	—	—	3.50	3.62	3.20	—	—
Sidi Kerir Petrochemicals (SKPC.CA)	9.70	Bearish	—	—	9.30	10.30	—	—	—
Textiles & Clothes									
Arab Co. for asset management & Deve. (ACAMD.CA)	0.65	Up-Corr.	—	—	0.64	0.705	0.567	—	—
Arab cotton ginning (ACGC.CA)	1.895	Up-Corr.	—	—	1.77	1.95	1.70	—	—
Oriental Weavers (ORWE.CA)	9.04	Bullish	9.25√	9.70	8.90	9.25	7.50	—	—
Other Sectors									
Egyptian Media Production City (MPC.CA)	6.00	Dn.-Corr.	—	—	5.90	6.20	5.90	—	—
Egyptian Transport - Egytrans (ETRS.CA)	14.01	Up-Corr.	—	—	13.60	14.60	13.60	—	—
Orascom holding development (ORHD.CA)	4.90	Up-Corr.	—	—	4.85	5.05	4.64	—	—
United Arab Shipping (UASG.CA)	1.261	Dn.-Corr.	—	—	1.21	1.34	1.15	—	—

Disclaimer

- This publication has been prepared by Blom Egypt Securities for information purposes only.
- It is not intended as an offer to buy or sell or a solicitation of an offer to buy or sell the securities mentioned.
- The information & opinions in this publication were prepared by Blom Egypt Securities research department accepts no liability or legal responsibility for losses & damages incurred arising from the use of this publication or its contents.

Blom Egypt Securities
Samir M. Azmi, CFTe, CETA
Senior Technical Analyst
samir.azmi@blomsecurities.com



Guidelines for using BLOM daily Technical Analysis Report

<u>Close:</u>	Is recorded as the last trade in the session.
<u>Trend:</u>	
Bullish :	The strategy is to buy the dips.
Bearish :	The strategy is to sell the rallies.
Flat :	The strategy is to trade the range between the triggers.
Up-Corr. :	A move against the major trend when it is down.
Dn.-Corr. :	A move against the major trend when it is up.
<u>Targets :</u>	Take some profit by reducing a portion of the position whenever a price target is been hit.
<u>Support :</u>	A level below market price (previous lows) where buyers showed strength, in a bull market buy near the support and don't sell on the resistance. A break below the Support is considered to be a bearish sign.
<u>Resistance :</u>	A level above market price (previous highs) where sellers showed strength, in a bear market sell near the resistance level and don't buy on the support. A break above the resistance is considered to be a bullish sign.
<u>Stop Loss :</u>	Must exit the current position whenever the closing price is (1% to 2%) below the stop loss and confirmed by volume.
<u>Triggers :</u>	The range between the lower trigger and the upper is used for trading, break of any of them, the move would continue in the same direction.
<u>Yellow rows:</u>	indication that the stock closed below/above support, stop-loss, or resistance but the break is not confirmed yet.

Disclaimer

- This publication has been prepared by Blom Egypt Securities for information purposes only.
- It is not intended as an offer to buy or sell or a solicitation of an offer to buy or sell the securities mentioned.
- The information & opinions in this publication were prepared by Blom Egypt Securities research department accepts no liability or legal responsibility for losses & damages incurred arising from the use of this publication or its contents.

Blom Egypt Securities
Samir M. Azmi, CFTe, CETA
Senior Technical Analyst
samir.azmi@blomsecurities.com