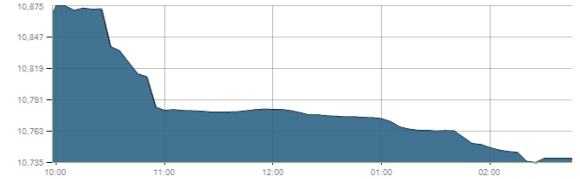




Indices intraday trends

EGX 30

مؤشر EGX 30
اليوم - 29/03/2021

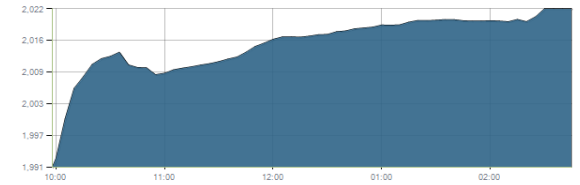


Key Levels

Support 1	10700	Resistance 1	11000
Support 2	10540	Resistance 2	11230

EGX 50 EWI

مؤشر EGX 50 EWI
اليوم - 29/03/2021

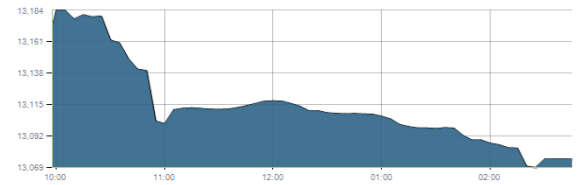


Key Levels

Close		2021.90	
Support 1	1990	Resistance 1	2050
Support 2	1907	Resistance 2	2150

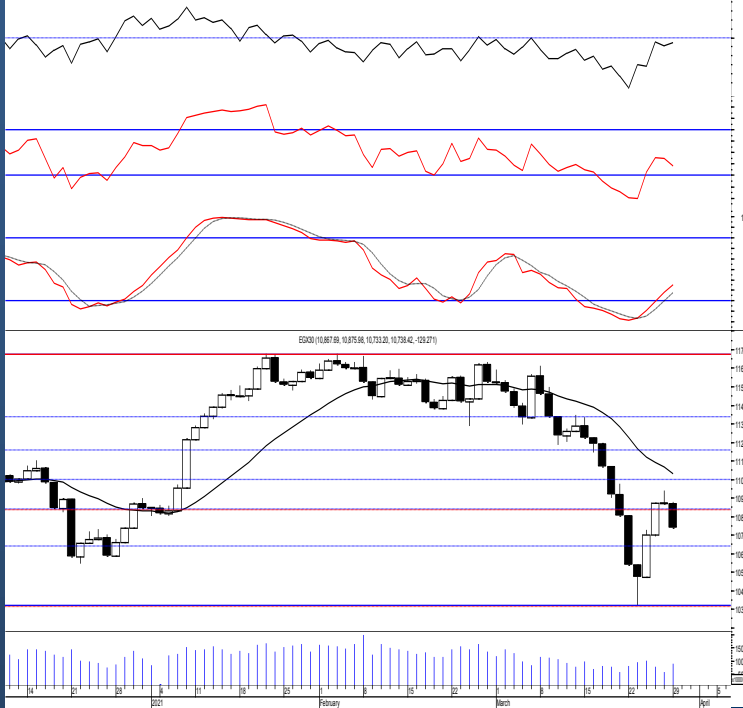
EGX 30 capped

مؤشر EGX 30 Capped
اليوم - 29/03/2021



Key Levels

Close		13075.34	
Support 1	12870	Resistance 1	13170
Support 2	12640	Resistance 2	13370



Market Commentary:

The EGX30 witnessed a strong downward move which was mainly due to the CIB strong decline while most of the stocks remained positive. As we said, 10700 was our upside trigger therefore further upward moves are expected, while on the hand should defend any downside move.

New short term trades may be opened on current levels as by breaking the mentioned level risk is reduced and using the mentioned resistance levels may safely be used. Held positions and new trades both are advised to keep close stops placed and respected

Close	10738.42	Trend	Bearish
Pre. Close	10867.69	Target 1	---
Change	↓ 129.27 (1.19%)	Target 2	---
Day's range	10875.98 — 10733.20	Stop-loss	---
52week's high	11675.69	52week's low	8113.82

Disclaimer

- This publication has been prepared by Blom Egypt Securities for information purposes only.
- It is not intended as an offer to buy or sell or a solicitation of an offer to buy or sell the securities mentioned.
- The information & opinions in this publication were prepared by Blom Egypt Securities research department accepts no liability or legal responsibility for losses & damages incurred arising from the use of this publication or its contents.

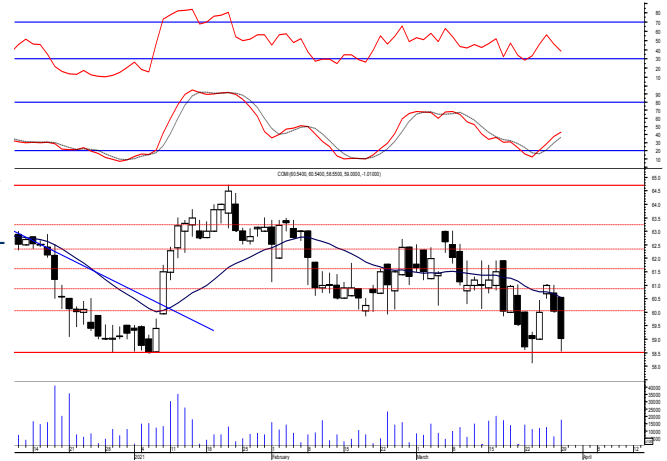
Blom Egypt Securities
Samir M. Azmi, CFTe, CETA
Senior Technical Analyst
samir.azmi@blomsecurities.com



Commercial international bank (COMI.CA):

Prices witnessed a sharp downward move violating the support level 60.00 turning it back into resistance and extended further reaching near the major support level 58.50 where buying process took place from managing to hold above gaining a fair portion of the day's losses
Current levels are still considered safe as long as buyers manages to defend the mentioned level so may be used for short term trading keeping stops placed and respected below 58.50

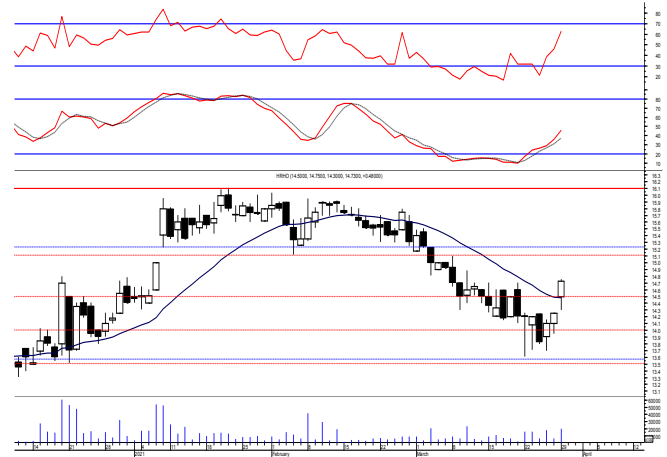
Support levels: 58.50, 56.70
Resistance levels: 60.00, 63.00



Hermes Holding (HRHO.CA):

Prices strongly closed above the support level 14.60 which as we said represents our upside trigger turning it into support therefore another rally is expected which will probably reach our coming mentioned resistance zone.
Close stops should always be placed and respected to protect the downside.
Same day trade could be tried targeting 15.20

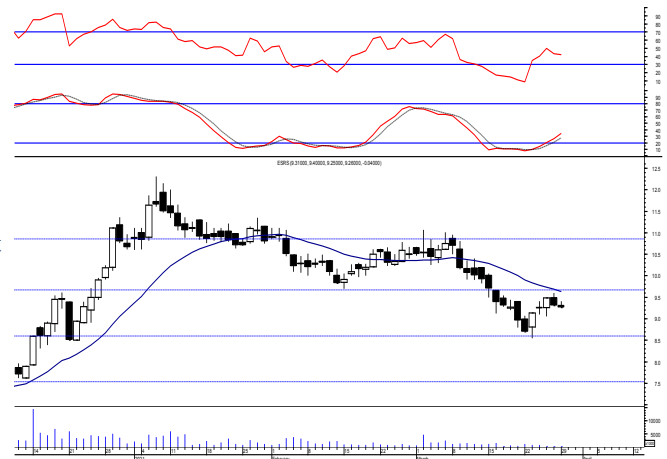
Support levels: 14.60, 13.50
Resistance levels: 15.25-15.55, 16.10



El-Ezz steel rebar's' (ESRS.CA):

Prices remained narrowly flat closing within the same range as quiet trading performance dominated keeping our outlook the same.
Short term trades may be opened on current levels as further climbing will probably take place testing the resistance level 9.80 where we may use for quick trading bearing in mind that close stops should be placed and respected

Support levels: 8.50, 7.50
Resistance levels: 9.80, 10.60



Disclaimer

- This publication has been prepared by Blom Egypt Securities for information purposes only.
- It is not intended as an offer to buy or sell or a solicitation of an offer to buy or sell the securities mentioned.
- The information & opinions in this publication were prepared by Blom Egypt Securities research department accepts no liability or legal responsibility for losses & damages incurred arising from the use of this publication or its contents.

Blom Egypt Securities
Samir M. Azmi, CFTe, CETA
Senior Technical Analyst
samir.azmi@blomsecurities.com



Most active Stocks

Daily Technical Analysis Report

30 Mar, 2021

Stock Name (Reuters' Code)	Close	Trend	T1	T2	Support	Resistance	SL	Triggers	
								Lower	Upper
Building Materials & Construction									
Arabian cement (ARCC.CA)	2.90	Bearish	—	—	2.75	3.00	—	—	—
El Ezz Steel Rebar's (ESRS.CA)	9.26	Bearish	—	—	8.50	9.80	—	—	—
GB auto (AUTO.CA)	4.00	Dn.-Corr.	—	—	3.95	4.24	3.65	—	—
Orascom construction (ORAS.CA)	89.90	Dn.-Corr.	—	—	88.00	93.00	81.00	—	—
South Valley Cement (SVCE.CA)	1.631	Bearish	—	—	1.44	1.63	—	—	—
Elsweddy Cables (SWDY.CA)	9.14	Up-Corr.	—	—	9.10	9.60	8.50	—	—
Upper Egypt general contracting (UEGC.CA)	0.76	Up-Corr.	—	—	0.725	0.815	0.67	—	—
Chemicals									
Abu-Qir fertilizers (ABUK.CA)	21.00	Dn.-Corr.	—	—	20.90	23.00	19.20	—	—
Egyptian Financial & Indust. (EFIC.CA)	11.11	Up-Corr.	—	—	10.60	11.50	9.60	—	—
Egyptian chemical industries-Kima (EGCH.CA)	3.40	Bearish	—	—	3.05	3.40	—	—	—
Communications									
Orascom investment holding (OIH.CA)	0.292	Dn.-Corr.	—	—	0.275	0.302	0.243	—	—
Telecom Egypt (ETEL.CA)	11.05	Up-Corr.	—	—	10.10	11.00	10.10	—	—
Financial Services									
Abu Dhabi International Bank (ADIB.CA)	10.60	Bearish	—	—	10.70	11.20	—	—	—
Arabian for investments & development (AIH.CA)	0.49	Up-Corr.	—	—	0.46	0.515	0.43	—	—
Amer holding group (AMER.CA)	0.871	Bearish	—	—	0.75	0.87	—	—	—
Commercial International Bank (COMI.CA)	59.00	Up-Corr.	—	—	58.50	60.00	58.50	—	—
Export development bank of Egypt (EXPA.CA)	11.67	Up-Corr.	—	—	11.20	12.00	11.20	—	—
Holding Companies									
Citadel capital (CCAP.CA)	1.256	Up-Corr.	—	—	1.21	1.29	1.12	—	—
Hermes Holding (HRHO.CA)	14.73	Up-Corr.	—	—	14.60	15.55	14.60	—	—
Kuwaiti Holding (EKHO.CA)	1.15	Up-Corr.	—	—	1.11	1.17	1.04	—	—
MM group for industry & international trade (MTIE.CA)	10.16	Up-Corr.	—	—	10.10	10.90	8.70	—	—
Orascom financial holding (OFH.CA)	0.284	Bearish	—	—	0.275	0.31	—	—	—
Pioneers holding (PIOH.CA)	4.66	Up-Corr.	—	—	4.50	4.90	4.15	—	—
Housing & Real Estate									
Egyptian For Tourism Resorts (EGTS.CA)	1.404	Up-Corr.	—	—	1.35	1.425	1.25	—	—
Elshams housing (ELSH.CA)	4.18	Bearish	—	—	3.70	4.15	—	—	—
Emaar holding (EMFD.CA)	2.31	Bearish	—	—	2.25	2.45	—	—	—
Heliopolis housing & development (HELL.CA)	4.69	Up-Corr.	—	—	4.50	4.75	4.30	—	—
Medinet Nasr for housing & Deve. (MNHD.CA)	3.70	Up-Corr.	—	—	3.50	3.75	3.50	—	—
6th. October Deve. Inv. (OCDI.CA)	16.40	Bullish	17.00 [√]	18.70	16.00	17.00	13.90	—	—
Palm hills development Co. (PHDC.CA)	1.639	Dn.-Corr.	—	—	1.53	1.67	1.53	—	—
Talaat Mustafa group holding (TMGH.CA)	6.38	Bearish	—	—	6.00	6.45	—	—	—
Mining & Gas									
Alexandria Mineral Oils Co. (AMOC.CA)	2.63	Up-Corr.	—	—	2.52	2.67	2.52	—	—
Sidi Kerir Petrochemicals (SKPC.CA)	10.15	Dn.-Corr.	—	—	9.80	10.60	9.80	—	—
Textiles & Clothes									
Arab Co. for asset management & Deve. (ACAMD.CA)	0.768	Bearish	—	—	0.64	0.73	—	—	—
Arab cotton ginning (ACGC.CA)	2.00	Bearish	—	—	1.90	2.10	—	—	—
Oriental Weavers (ORWE.CA)	7.39	Up-Corr.	—	—	7.00	7.45	6.50	—	—
Other Sectors									
Egyptian Media Production City (MPRC.CA)	5.49	Bearish	—	—	5.10	5.65	—	—	—
Egyptian Transport - Egytrans (ETRS.CA)	12.00	Up-Corr.	—	—	11.00	12.10	10.10	—	—
Orascom holding development (ORHD.CA)	5.40	Dn.-Corr.	—	—	5.30	5.65	4.70	—	—
United Arab Shipping (UASG.CA)	0.84	Up-Corr.	—	—	0.78	0.85	0.78	—	—

Disclaimer

- This publication has been prepared by Blom Egypt Securities for information purposes only.
- It is not intended as an offer to buy or sell or a solicitation of an offer to buy or sell the securities mentioned.
- The information & opinions in this publication were prepared by Blom Egypt Securities research department accepts no liability or legal responsibility for losses & damages incurred arising from the use of this publication or its contents.

Blom Egypt Securities
Samir M. Azmi, CFTe, CETA
Senior Technical Analyst
samir.azmi@blomsecurities.com



Guidelines for using BLOM daily Technical Analysis Report

<u>Close:</u>	Is recorded as the last trade in the session.
<u>Trend:</u>	
Bullish :	The strategy is to buy the dips.
Bearish :	The strategy is to sell the rallies.
Flat :	The strategy is to trade the range between the triggers.
Up-Corr. :	A move against the major trend when it is down.
Dn.-Corr. :	A move against the major trend when it is up.
<u>Targets :</u>	Take some profit by reducing a portion of the position whenever a price target is been hit.
<u>Support :</u>	A level below market price (previous lows) where buyers showed strength, in a bull market buy near the support and don't sell on the resistance. A break below the Support is considered to be a bearish sign.
<u>Resistance :</u>	A level above market price (previous highs) where sellers showed strength, in a bear market sell near the resistance level and don't buy on the support. A break above the resistance is considered to be a bullish sign.
<u>Stop Loss :</u>	Must exit the current position whenever the closing price is (1% to 2%) below the stop loss and confirmed by volume.
<u>Triggers :</u>	The range between the lower trigger and the upper is used for trading, break of any of them, the move would continue in the same direction.
<u>Yellow rows:</u>	indication that the stock closed below/above support, stop-loss, or resistance but the break is not confirmed yet.

Disclaimer

- This publication has been prepared by Blom Egypt Securities for information purposes only.
- It is not intended as an offer to buy or sell or a solicitation of an offer to buy or sell the securities mentioned.
- The information & opinions in this publication were prepared by Blom Egypt Securities research department accepts no liability or legal responsibility for losses & damages incurred arising from the use of this publication or its contents.

Blom Egypt Securities
Samir M. Azmi, CFTe, CETA
Senior Technical Analyst
samir.azmi@blomsecurities.com