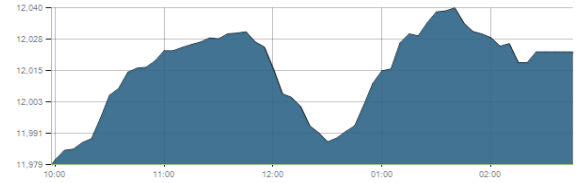


Indices intraday trends

EGX 30

مؤشر EGX 30
اليوم - 10/01/2022

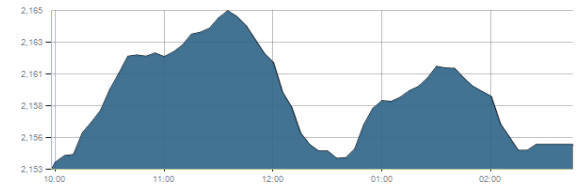


Key Levels

| | | | |
|-----------|-------|--------------|-------|
| Support 1 | 11900 | Resistance 1 | 12250 |
| Support 2 | 11675 | Resistance 2 | 12850 |

EGX 50 EWI

مؤشر EGX 50 EWI
اليوم - 10/01/2022

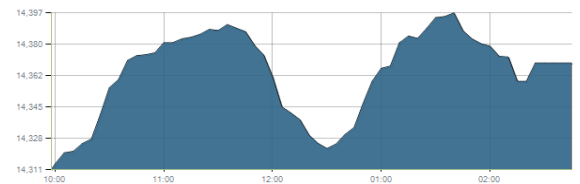


Key Levels

| | | | |
|-----------|------|--------------|------|
| Close | | 2155.24 | |
| Support 1 | 2150 | Resistance 1 | 2210 |
| Support 2 | 2060 | Resistance 2 | 2290 |

EGX 30 capped

مؤشر EGX 30 Capped
اليوم - 10/01/2022



Key Levels

| | | | |
|-----------|-------|--------------|-------|
| Close | | 14369.30 | |
| Support 1 | 14325 | Resistance 1 | 14750 |
| Support 2 | 14150 | Resistance 2 | 15000 |

Market Commentary:

The EGX30 remained narrowly flat closing slightly positive as balanced trading performance dominated keeping the index within the same range leaving everything in place. Yet, the rally is still expected to resume to the second target level where we may use for short term trading. As we said, medium term targets now 12250 & 12850, while short term, targets will be 11900 & 12070. We recommend to be conservative and very selective keeping close stops placed and respected to reduce market risk. Notice that any retreating below 11675 will put the market under stress leading to further decline due to lack of confidence so stay alerted and disciplined.

| | | | |
|---------------|---------------------|--------------|------------|
| Close | 13022.69 | Trend | Targets |
| Pre. Close | 11978.56 | Target 1 | 11900 ✓ |
| Change | ↑ 44.13 (0.37%) | Target 2 | 12070 |
| Day's range | 11978.56 — 12040.81 | Stop-loss | 11200 |
| 52week's high | 11959.66 | 52week's low | 9769.18.18 |

Disclaimer

- This publication has been prepared by Blom Egypt Securities for information purposes only.
- It is not intended as an offer to buy or sell or a solicitation of an offer to buy or sell the securities mentioned.
- The information & opinions in this publication were prepared by Blom Egypt Securities research department accepts no liability or legal responsibility for losses & damages incurred arising from the use of this publication or its contents.

Blom Egypt Securities
Samir M. Azmi, CFTe, CETA
Senior Technical Analyst
samir.azmi@blomsecurities.com



Commercial international bank (COMI.CA):

Prices remained narrowly flat closing on the support level 52.80 after fluctuating mostly around so everything is in place. possible trades could be tried on current levels, bearing in mind that clearing the previous reached high will confirm the existing bullish sentiment setting new target levels.

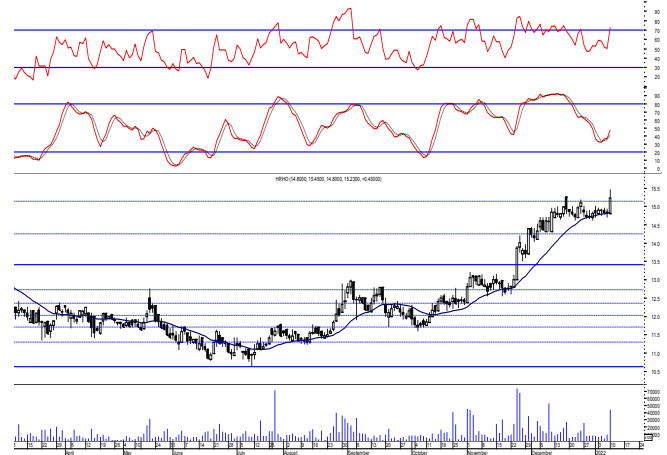
Support levels: 52.80, 51.60
Resistance levels: 54.15, 56.00



Hermes Holding (HRHO.CA):

Prices remained flat within the same range closing slightly positive leaving everything in place. Further climbing will likely follow to the previous reached high where we may use the range for short term trading. We recommended to trade on the mentioned target, now we recommend to stay on cash till a confirmed buy signal is clear. Held positions are advised to keep protective stop placed and respected below 14.45.

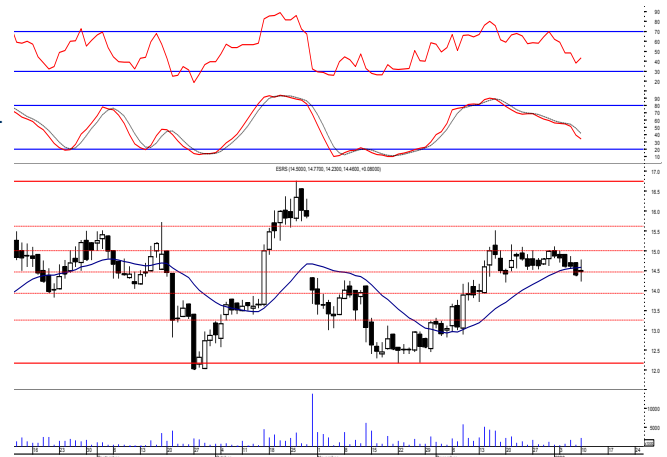
Support levels: 14.45, 13.40
Resistance levels: 15.25, 16.35



El-Ezz steel rebar's' (ESRS.CA):

Prices remained narrowly flat as quiet trading performance remained dominating most of the session closing again slightly below the support level 14.50 which still needs confirmation so everything is considered in place. Yet, it's recommended to stay on cash and wait for a confirmed buy signal to react safely on.

Support levels: 14.50, 13.80
Resistance levels: 15.65, 16.75



| | |
|---|--|
| <p>Disclaimer</p> <ul style="list-style-type: none"> • This publication has been prepared by Blom Egypt Securities for information purposes only. • It is not intended as an offer to buy or sell or a solicitation of an offer to buy or sell the securities mentioned. • The information & opinions in this publication were prepared by Blom Egypt Securities research department accepts no liability or legal responsibility for losses & damages incurred arising from the use of this publication or its contents. | <p>Blom Egypt Securities Samir M. Azmi, CFTe, CETA Senior Technical Analyst samir.azmi@blomsecurities.com</p> |
|---|--|



Most active Stocks

Daily Technical Analysis Report

11 Jan, 2022

| Stock Name (Reuters' Code) | Close | Trend | T1 | T2 | Support | Resistance | SL | Triggers | |
|--|-------|-----------|--------|--------|---------|------------|-------|----------|-------|
| | | | | | | | | Lower | Upper |
| Building Materials & Construction | | | | | | | | | |
| Arabian Cement (ARCC.CA) | 4.50 | Bullish | 4.60√ | 4.90 | 4.35 | 4.70 | 3.60 | --- | |
| GB Auto (AUTO.CA) | 4.94 | Bullish | 5.30 | 5.75 | 4.95 | 5.30 | 4.35 | --- | |
| El Ezz Steel Rebar's (ESRS.CA) | 14.46 | Up-Corr. | --- | --- | 14.50 | 15.65 | 13.20 | --- | |
| Orascom Construction (ORAS.CA) | 77.05 | Dn.-Corr. | --- | --- | 77.00 | 79.90 | 68.50 | --- | |
| South Valley Cement (SVCE.CA) | 1.547 | Bullish | 1.58√ | 1.70 | 1.47 | 1.58 | 1.36 | --- | |
| Elswedey Cables (SWDY.CA) | 9.88 | Bullish | 9.70√ | 10.25 | 9.40 | 10.25 | 8.60 | --- | |
| Upper Egypt General Contracting (UEGC.CA) | 0.71 | Bullish | 0.74 | 0.78 | 0.685 | 0.74 | 0.639 | --- | |
| Chemicals | | | | | | | | | |
| Abu-Qir Fertilizers (ABUK.CA) | 21.25 | Up-Corr. | --- | --- | 20.50 | 21.70 | 17.90 | --- | |
| Egyptian Financial & Indust. (EFIC.CA) | 13.52 | Up-Corr. | --- | --- | 12.50 | 13.70 | 11.40 | --- | |
| Egyptian Chemical Industries-Kima (EGCH.CA) | 3.90 | Up-Corr. | --- | --- | 3.80 | 4.10 | 3.00 | --- | |
| Communications | | | | | | | | | |
| Telecom Egypt (ETEL.CA) | 17.00 | Bullish | 18.30 | 19.25 | 16.60 | 18.30 | 14.70 | --- | |
| Fawry For Banking Tech. & Electronic Payment (FWRY.CA) | 13.02 | Up-Corr. | --- | --- | 12.30 | 13.60 | 11.80 | --- | |
| Orascom Investment Holding (OIH.CA) | 0.237 | Up-Corr. | --- | --- | 0.23 | 0.26 | 0.20 | --- | |
| Financial Services | | | | | | | | | |
| Abu Dhabi International Bank (ADIB.CA) | 15.73 | Up-Corr. | --- | --- | 15.50 | 16.10 | 12.60 | --- | |
| Arabian For Investments & Development (AIH.CA) | 0.392 | Bullish | 0.397√ | 0.425 | 0.37 | 0.397 | 0.35 | --- | |
| Amer Holding Group (AMER.CA) | 0.977 | Up-Corr. | --- | --- | 0.945 | 1.00 | 0.85 | --- | |
| Credit Agricole (CIEB.CA) | 8.21 | Bullish | 8.45√ | 9.15 | 7.80 | 8.45 | 6.80 | --- | |
| Commercial International Bank (COMI.CA) | 52.80 | Dn.-Corr. | --- | --- | 52.80 | 54.15 | 46.60 | --- | |
| Export Development Bank Of Egypt (EXPA.CA) | 9.36 | Up-Corr. | --- | --- | 9.15 | 9.70 | 8.60 | --- | |
| Holding Companies | | | | | | | | | |
| B Investments Holdings (BINV.CA) | 11.73 | Up-Corr. | --- | --- | 11.00 | 12.20 | 9.80 | --- | |
| Citadel Capital (CCAP.CA) | 1.262 | Up-Corr. | --- | --- | 1.23 | 1.305 | 1.09 | --- | |
| Kuwaiti Holding (EKHO.CA) | 1.406 | Dn.-Corr. | --- | --- | 1.355 | 1.405 | 1.22 | --- | |
| Hermes Holding (HRHO.CA) | 15.23 | Bullish | 14.25√ | 15.20√ | 14.45 | 15.25 | 11.25 | --- | |
| MM Group For Industry & International Trade (MTIE.CA) | 7.39 | Bullish | 7.60√ | 8.10 | 7.15 | 7.60 | 6.60 | --- | |
| Orascom Financial Holding (OFH.CA) | 0.233 | Up-Corr. | --- | --- | 0.228 | 0.236 | 0.208 | --- | |
| Housing & Real Estate | | | | | | | | | |
| Egyptian For Tourism Resorts (EGTS.CA) | 1.504 | Up-Corr. | --- | --- | 1.44 | 1.63 | 1.23 | --- | |
| El-shams Housing (ELSH.CA) | 8.44 | Up-Corr. | --- | --- | 8.30 | 9.30 | 7.40 | --- | |
| Emaar Holding (EMFD.CA) | 3.07 | Bullish | 3.00√ | 3.20 | 2.80 | 3.10 | 2.70 | --- | |
| Heliopolis Housing & Development (HELI.CA) | 6.63 | Dn.-Corr. | --- | --- | 6.30 | 6.90 | 6.30 | --- | |
| Medinet Nasr For Housing & Deve. (MNHD.CA) | 3.03 | Up-Corr. | --- | --- | 2.90 | 3.05 | 2.52 | --- | |
| Palm Hills Development Co. (PHDC.CA) | 1.944 | Up-Corr. | --- | --- | 1.94 | 2.00 | 1.72 | --- | |
| Talaat Mustafa Group Holding (TMGH.CA) | 9.06 | Bullish | 9.55 | 10.05 | 8.90 | 10.05 | 7.60 | --- | |
| Mining & Gas | | | | | | | | | |
| Alexandria Mineral Oils Co. (AMOC.CA) | 3.91 | Bullish | 4.05 | 4.20 | 3.80 | 4.05 | 3.33 | --- | |
| Sidi Kerir Petrochemicals (SKPC.CA) | 7.85 | Up-Corr. | --- | --- | 7.70 | 8.10 | 6.30 | --- | |
| Textiles & Clothes | | | | | | | | | |
| Arab Co. For Asset Management & Deve. (ACAMD.CA) | 0.509 | Up-Corr. | --- | --- | 0.50 | 0.565 | 0.42 | --- | |
| Arab Cotton Ginning (ACGC.CA) | 1.746 | Up-Corr. | --- | --- | 1.65 | 1.81 | 1.455 | --- | |
| Oriental Weavers (ORWE.CA) | 8.61 | Dn.-Corr. | --- | --- | 8.40 | 8.75 | 7.50 | --- | |
| Other Sectors | | | | | | | | | |
| Egyptian Media Production City (MPRC.CA) | 6.33 | Up-Corr. | --- | --- | 6.00 | 6.40 | 4.80 | --- | |
| Orascom Holding Development (ORHD.CA) | 5.75 | Up-Corr. | --- | --- | 5.55 | 5.80 | 5.15 | --- | |
| Delta Sugar (SUGR.CA) | 16.23 | Up-Corr. | --- | --- | 15.30 | 17.00 | 13.30 | --- | |
| United Arab Shipping (UASG.CA) | 1.02 | Up-Corr. | --- | --- | 0.975 | 1.04 | 0.80 | --- | |

Disclaimer

- This publication has been prepared by Blom Egypt Securities for information purposes only.
- It is not intended as an offer to buy or sell or a solicitation of an offer to buy or sell the securities mentioned.
- The information & opinions in this publication were prepared by Blom Egypt Securities research department accepts no liability or legal responsibility for losses & damages incurred arising from the use of this publication or its contents.

Blom Egypt Securities
Samir M. Azmi, CFTe, CETA
Senior Technical Analyst
samir.azmi@blomsecurities.com



Guidelines for using BLOM daily Technical Analysis Report

| | |
|----------------------------|---|
| <u>Close:</u> | Is recorded as the last trade in the session. |
| <u>Trend:</u> | |
| Bullish : | The strategy is to buy the dips. |
| Bearish : | The strategy is to sell the rallies. |
| Flat : | The strategy is to trade the range between the triggers. |
| Up-Corr. : | A move against the major trend when it is down. |
| Dn.-Corr. : | A move against the major trend when it is up. |
| <u>Targets :</u> | Take some profit by reducing a portion of the position whenever a price target is been hit. |
| <u>Support :</u> | A level below market price (previous lows) where buyers showed strength, in a bull market buy near the support and don't sell on the resistance. A break below the Support is considered to be a bearish sign. |
| <u>Resistance :</u> | A level above market price (previous highs) where sellers showed strength, in a bear market sell near the resistance level and don't buy on the support. A break above the resistance is considered to be a bullish sign. |
| <u>Stop Loss :</u> | Must exit the current position whenever the closing price is (1% to 2%) below the stop loss and confirmed by volume. |
| <u>Triggers :</u> | The range between the lower trigger and the upper is used for trading, break of any of them, the move would continue in the same direction. |
| <u>Yellow rows:</u> | indication that the stock closed below/above support, stop-loss, or resistance but the break is not confirmed yet. |

Disclaimer

- This publication has been prepared by Blom Egypt Securities for information purposes only.
- It is not intended as an offer to buy or sell or a solicitation of an offer to buy or sell the securities mentioned.
- The information & opinions in this publication were prepared by Blom Egypt Securities research department accepts no liability or legal responsibility for losses & damages incurred arising from the use of this publication or its contents.

Blom Egypt Securities
Samir M. Azmi, CFTe, CETA
Senior Technical Analyst
samir.azmi@blomsecurities.com