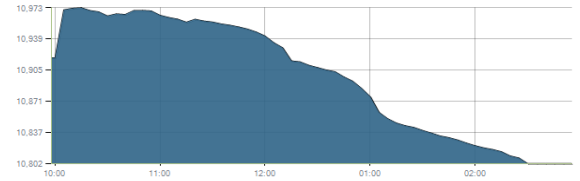




Indices intraday trends

EGX 30

مؤشر EGX 30  
اليوم - 21/03/2021

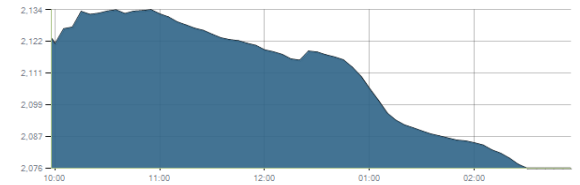


Key Levels

Support 1	10700	Resistance 1	10900
Support 2	10540	Resistance 2	11000-11100

EGX 50 EWI

مؤشر EGX 50 EWI  
اليوم - 21/03/2021

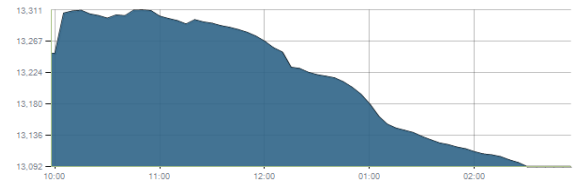


Key Levels

Close		2075.73	
Support 1	2050	Resistance 1	2150
Support 2	1990	Resistance 2	2230

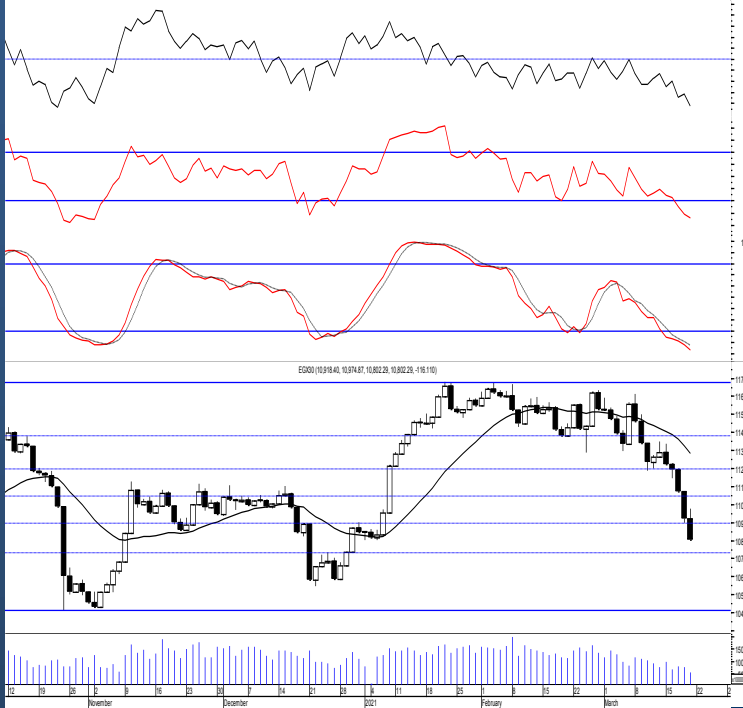
EGX 30 capped

مؤشر EGX 30 Capped  
اليوم - 21/03/2021



Key Levels

Close		13092.41	
Support 1	12870	Resistance 1	13170
Support 2	12640	Resistance 2	13470



Market Commentary:

The EGX30 extended lower after failing to continue the early rebounding attempt as selling pressure remained in control our 2nd support level 10900 turning it into resistance. Yet, we still believe that the third mentioned level will be reached where we should watch carefully. As we said, bears now have the near term technical advantage and lower lows will be expected. We recommend to react separately on every stock while new trades to wait for a confirmed buy signal to react safely on.

Close	10802.29	Trend	Bearish
Pre. Close	10918.40	Target 1	---
Change	↓ 116.11 ( 1.06% )	Target 2	---
Day's range	10974.87 — 10802.29	Stop-loss	---
52week's high	11675.69	52week's low	8113.82

Disclaimer

- This publication has been prepared by Blom Egypt Securities for information purposes only.
- It is not intended as an offer to buy or sell or a solicitation of an offer to buy or sell the securities mentioned.
- The information & opinions in this publication were prepared by Blom Egypt Securities research department accepts no liability or legal responsibility for losses & damages incurred arising from the use of this publication or its contents.

**Blom Egypt Securities**  
Samir M. Azmi, CFTe, CETA  
Senior Technical Analyst  
samir.azmi@blomsecurities.com

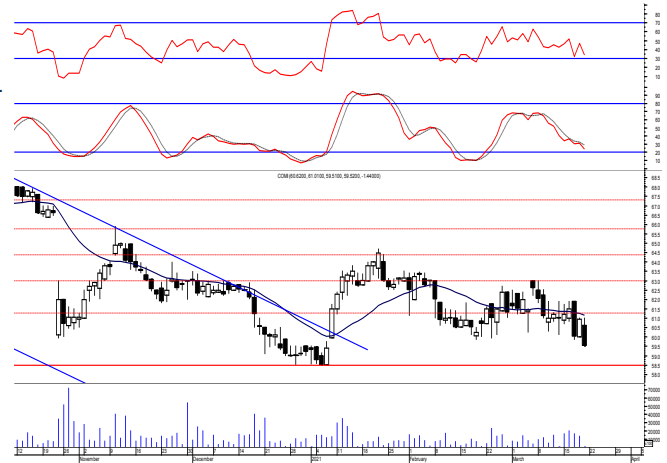


**Commercial international bank (COMI.CA):**

Prices remained hovering around the support level 60.00 closing slightly below but due to low trading volumes confirmation is still needed so levels are the same and so for our outlook.

New trades should wait for more confirmation while existing ones are advised to keep protective stop placed below 60.00.

Support levels: 60.00, 58.50  
Resistance levels: 63.00, 64.50

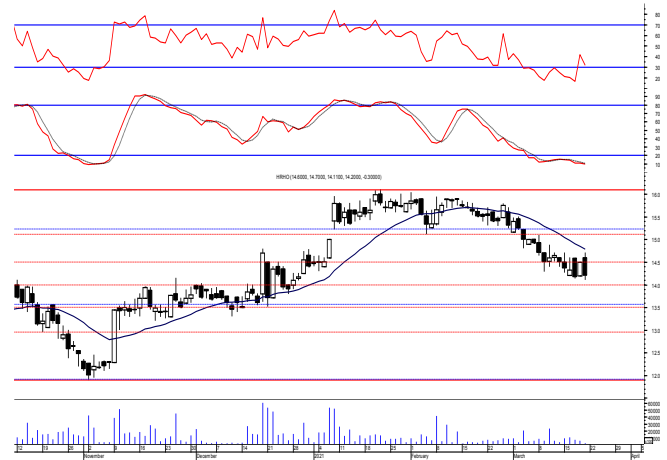


**Hermes Holding (HRHO.CA):**

Prices closed near the day's low after failing to continue the early rally attempt. As we said, by failing to defend the support level 14.60 bears are in control and therefore lower lows is expected.

Close stops should always be placed and respected to protect the downside.

Support levels: 13.50, 12.90  
Resistance levels: 14.60, 15.25-15.55

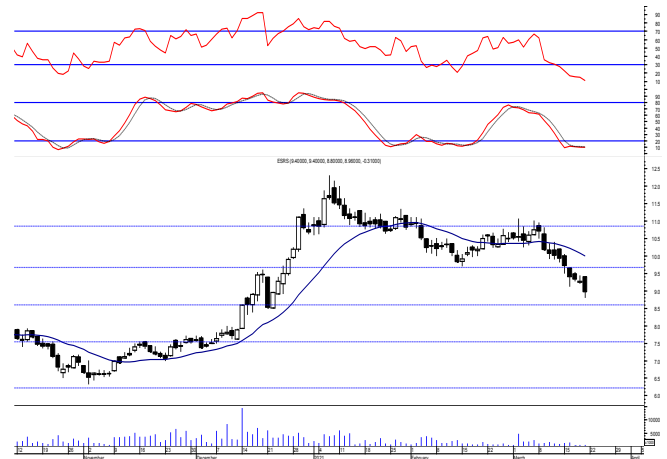


**El-Ezz steel rebar's' (ESRS.CA):**

Prices witnessed a downward move breaking the recent reached lows which indicates that bears are still in control closing in red within the same range keeping everything in place.

Yet, new positions are advised to wait for a confirmed buy signal to react safely on

Support levels: 8.50, 7.50  
Resistance levels: 9.80, 10.60



**Disclaimer**

- This publication has been prepared by Blom Egypt Securities for information purposes only.
- It is not intended as an offer to buy or sell or a solicitation of an offer to buy or sell the securities mentioned.
- The information & opinions in this publication were prepared by Blom Egypt Securities research department accepts no liability or legal responsibility for losses & damages incurred arising from the use of this publication or its contents.

**Blom Egypt Securities**  
**Samir M. Azmi, CFTe, CETA**  
Senior Technical Analyst  
[samir.azmi@blomsecurities.com](mailto:samir.azmi@blomsecurities.com)



Most active Stocks

Daily Technical Analysis Report

22 Mar, 2021

Stock Name (Reuters' Code)	Close	Trend	T1	T2	Support	Resistance	SL	Triggers	
								Lower	Upper
<b>Building Materials &amp; Construction</b>									
Arabian cement (ARCC.CA)	2.94	Bearish	—	—	2.75	3.00	—	—	—
El Ezz Steel Rebar's (ESRS.CA)	8.96	Bearish	—	—	8.50	9.80	—	—	—
GB auto (AUTO.CA)	3.80	Dn.-Corr.	—	—	3.65	3.97	3.65	—	—
Orascom construction (ORAS.CA)	91.00	Dn.-Corr.	—	—	88.00	93.00	81.00	—	—
South Valley Cement (SVCE.CA)	1.64	Bearish	—	—	1.60	1.75	—	—	—
Elsweddy Cables (SWDY.CA)	8.94	Bearish	—	—	8.50	9.15	—	—	—
Upper Egypt general contracting (UEGC.CA)	0.718	Bearish	—	—	0.657	0.73	—	—	—
<b>Chemicals</b>									
Abu-Qir fertilizers (ABUK.CA)	20.01	Dn.-Corr.	—	—	19.20	20.90	19.20	—	—
Egyptian Financial & Indust. (EFIC.CA)	10.81	Bearish	—	—	10.60	11.50	—	—	—
Egyptian chemical industries-Kima (EGCH.CA)	3.58	Up-Corr.	—	—	3.60	3.80	3.60	—	—
<b>Communications</b>									
Orascom investment holding (OIH.CA)	0.308	Bullish	0.302√	0.345	0.30	0.345	0.243	—	—
Telecom Egypt (ETEL.CA)	10.40	Bearish	—	—	10.10	10.85	—	—	—
<b>Financial Services</b>									
Abu Dhabi International Bank (ADIB.CA)	11.11	Bearish	—	—	10.70	11.20	—	—	—
Arabian for investments & development (AIH.CA)	0.518	Up-Corr.	—	—	0.50	0.536	0.50	—	—
Amer holding group (AMER.CA)	0.992	Dn.-Corr.	—	—	0.978	1.07	0.978	—	—
Commercial International Bank (COMI.CA)	59.52	Up-Corr.	—	—	60.00	63.00	58.50	—	—
Export development bank of Egypt (EXPA.CA)	12.90	Bearish	—	—	12.50	13.30	—	—	—
<b>Holding Companies</b>									
Citadel capital (CCAP.CA)	1.292	Bearish	—	—	1.275	1.32	—	—	—
Hermes Holding (HRHO.CA)	14.20	Bearish	—	—	13.50	14.60	—	—	—
Kuwaiti Holding (EKHO.CA)	1.155	Up-Corr.	—	—	1.11	1.17	1.04	—	—
MM group for industry & international trade (MTIE.CA)	9.74	Bearish	—	—	9.25	10.20	—	—	—
Orascom financial holding (OFH.CA)	0.30	Bearish	—	—	0.275	0.31	—	—	—
Pioneers holding (PIOH.CA)	4.41	Bearish	—	—	4.15	4.55	—	—	—
<b>Housing &amp; Real Estate</b>									
Egyptian For Tourism Resorts (EGTS.CA)	1.418	Bearish	—	—	1.35	1.47	—	—	—
Elshams housing (ELSH.CA)	4.10	Bearish	—	—	3.70	4.15	—	—	—
Emaar holding (EMFD.CA)	2.38	Bearish	—	—	2.25	2.45	—	—	—
Heliopolis housing & development (HELL.CA)	4.71	Bearish	—	—	4.60	5.00	—	—	—
Medinet Nasr for housing & Deve. (MNHD.CA)	3.66	Up-Corr.	—	—	3.50	3.75	3.50	—	—
6th. October Deve. Inv. (OCDI.CA)	16.70	Bullish	17.00√	18.70	16.00	17.00	13.90	—	—
Palm hills development Co. (PHDC.CA)	1.65	Dn.-Corr.	—	—	1.53	1.67	1.53	—	—
Talaat Mustafa group holding (TMGH.CA)	6.33	Bearish	—	—	6.00	6.45	—	—	—
<b>Mining &amp; Gas</b>									
Alexandria Mineral Oils Co. (AMOC.CA)	2.80	Up-Corr.	—	—	2.75	3.00	2.75	—	—
Sidi Kerir Petrochemicals (SKPC.CA)	10.60	Dn.-Corr.	—	—	10.50	11.10	9.80	—	—
<b>Textiles &amp; Clothes</b>									
Arab Co. for asset management & Deve. (ACAMD.CA)	0.827	Up-Corr.	—	—	0.82	0.93	0.77	—	—
Arab cotton ginning (ACGC.CA)	2.50	Bearish	—	—	2.40	2.65	—	—	—
Oriental Weavers (ORWE.CA)	6.96	Up-Corr.	—	—	6.75	7.10	6.50	—	—
<b>Other Sectors</b>									
Egyptian Media Production City (MPRC.CA)	5.50	Bearish	—	—	5.10	5.65	—	—	—
Egyptian Transport - Egytrans (ETRS.CA)	11.00	Bearish	—	—	10.60	11.00	—	—	—
Orascom holding development (ORHD.CA)	5.49	Dn.-Corr.	—	—	5.35	5.65	4.70	—	—
United Arab Shipping (UASG.CA)	0.87	Bearish	—	—	0.83	0.91	—	—	—

Disclaimer

- This publication has been prepared by Blom Egypt Securities for information purposes only.
- It is not intended as an offer to buy or sell or a solicitation of an offer to buy or sell the securities mentioned.
- The information & opinions in this publication were prepared by Blom Egypt Securities research department accepts no liability or legal responsibility for losses & damages incurred arising from the use of this publication or its contents.

**Blom Egypt Securities**  
Samir M. Azmi, CFTe, CETA  
Senior Technical Analyst  
samir.azmi@blomsecurities.com



### Guidelines for using BLOM daily Technical Analysis Report

<b><u>Close:</u></b>	Is recorded as the last trade in the session.
<b><u>Trend:</u></b>	
<b>Bullish :</b>	The strategy is to buy the dips.
<b>Bearish :</b>	The strategy is to sell the rallies.
<b>Flat :</b>	The strategy is to trade the range between the triggers.
<b>Up-Corr. :</b>	A move against the major trend when it is down.
<b>Dn.-Corr. :</b>	A move against the major trend when it is up.
<b><u>Targets :</u></b>	Take some profit by reducing a portion of the position whenever a price target is been hit.
<b><u>Support :</u></b>	A level below market price (previous lows) where buyers showed strength, in a bull market buy near the support and don't sell on the resistance. A break below the Support is considered to be a bearish sign.
<b><u>Resistance :</u></b>	A level above market price (previous highs) where sellers showed strength, in a bear market sell near the resistance level and don't buy on the support. A break above the resistance is considered to be a bullish sign.
<b><u>Stop Loss :</u></b>	Must exit the current position whenever the closing price is (1% to 2%) below the stop loss and confirmed by volume.
<b><u>Triggers :</u></b>	The range between the lower trigger and the upper is used for trading, break of any of them, the move would continue in the same direction.
<b><u>Yellow rows:</u></b>	indication that the stock closed below/above support, stop-loss, or resistance but the break is not confirmed yet.

#### Disclaimer

- This publication has been prepared by Blom Egypt Securities for information purposes only.
- It is not intended as an offer to buy or sell or a solicitation of an offer to buy or sell the securities mentioned.
- The information & opinions in this publication were prepared by Blom Egypt Securities research department accepts no liability or legal responsibility for losses & damages incurred arising from the use of this publication or its contents.

**Blom Egypt Securities**  
**Samir M. Azmi, CFTe, CETA**  
**Senior Technical Analyst**  
[samir.azmi@blomsecurities.com](mailto:samir.azmi@blomsecurities.com)