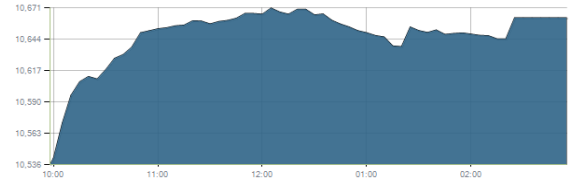




Indices intraday trends

EGX 30

مؤشر EGX 30  
اليوم - 10/10/2021

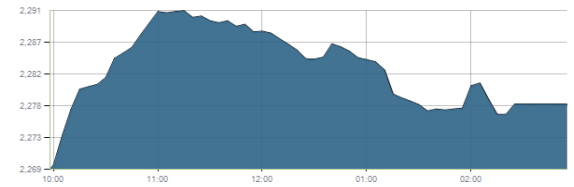


Key Levels

|           |       |              |             |
|-----------|-------|--------------|-------------|
| Support 1 | 10350 | Resistance 1 | 10680       |
| Support 2 | 10150 | Resistance 2 | 10850-10950 |

EGX 50 EWI

مؤشر EGX 50 EWI  
اليوم - 10/10/2021

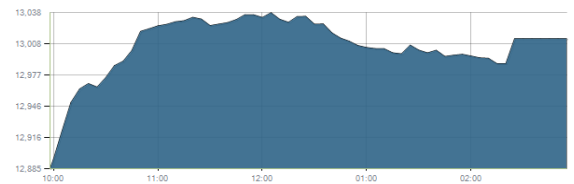


Key Levels

|           |      |              |      |
|-----------|------|--------------|------|
| Close     |      | 2277.88      |      |
| Support 1 | 2240 | Resistance 1 | 2310 |
| Support 2 | 2200 | Resistance 2 | 2355 |

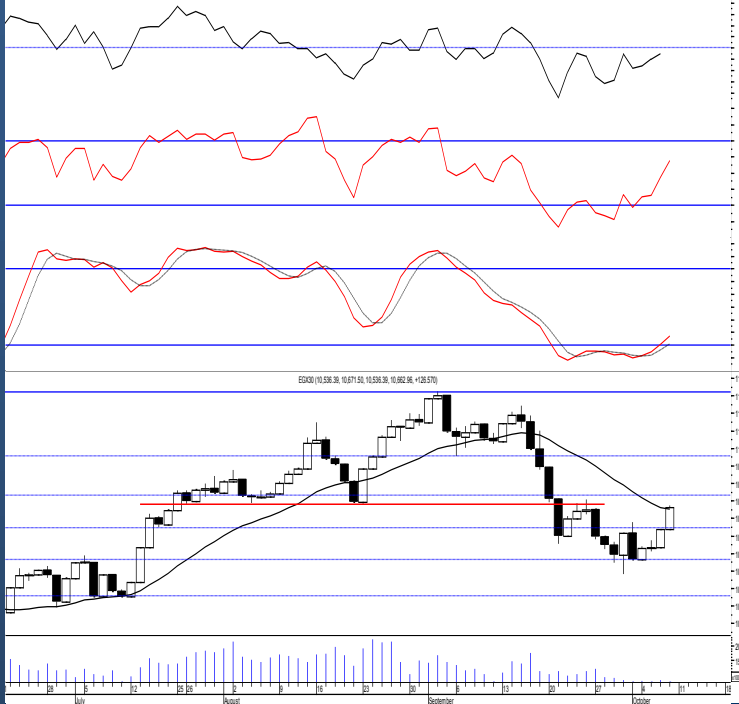
EGX 30 capped

مؤشر EGX 30 Capped  
اليوم - 10/10/2021



Key Levels

|           |       |              |       |
|-----------|-------|--------------|-------|
| Close     |       | 13012.51     |       |
| Support 1 | 12800 | Resistance 1 | 13065 |
| Support 2 | 12800 | Resistance 2 | 13170 |



Market Commentary:

The EGX30 witnessed another upward move approaching our important resistance level 10680 where it's highly recommended to watch carefully. Yet, as we said strength signals are still valid on our indicators on the daily frame but weak trading volumes still keeps the market risk elevated keeping our outlook unchanged. We still recommend staying on cash till a clear reentry signal is clearly given.

Increasing trading volumes is always an important factor to prove real buying strength otherwise any upward move will only be an up correction within the short term down trend.

Any open trades may take profit at least partially on the coming resistance level and wait for new signals to be evident.

|               |                     |              |            |
|---------------|---------------------|--------------|------------|
| Close         | 10662.96            | Trend        | Bearish    |
| Pre. Close    | 10536.39            | Target 1     | ---        |
| Change        | ↑ 126.57 ( 1.20% )  | Target 2     | ---        |
| Day's range   | 10536.39 — 10671.50 | Stop-loss    | ---        |
| 52week's high | 11675.69            | 52week's low | 9769.18.18 |

Disclaimer

- This publication has been prepared by Blom Egypt Securities for information purposes only.
- It is not intended as an offer to buy or sell or a solicitation of an offer to buy or sell the securities mentioned.
- The information & opinions in this publication were prepared by Blom Egypt Securities research department accepts no liability or legal responsibility for losses & damages incurred arising from the use of this publication or its contents.

**Blom Egypt Securities**  
Samir M. Azmi, CFTe, CETA  
Senior Technical Analyst  
samir.azmi@blomsecurities.com

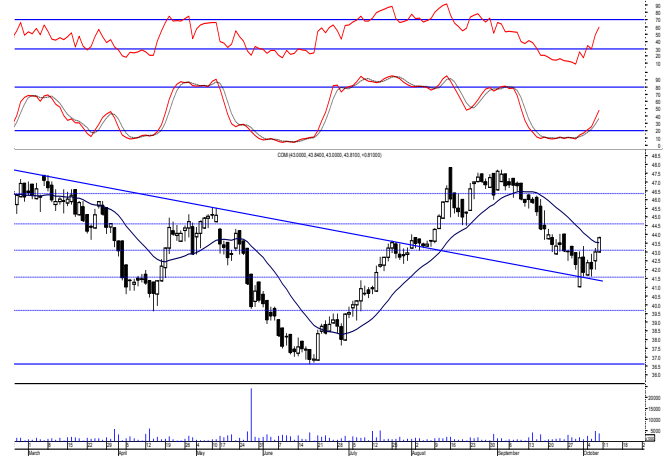


**Commercial international bank (COMI.CA):**

Prices climbed higher managing to clear our resistance level 43.50 and closed above fueled by increasing trading volumes turning it into support.

As we said, by managing to clear the mentioned resistance level 43.50 we may continue using current levels for quick trading expecting to reach 44.70 keeping close stops placed and respected

Support levels: 43.50, 42.30  
 Resistance levels: 44.70, 46.40

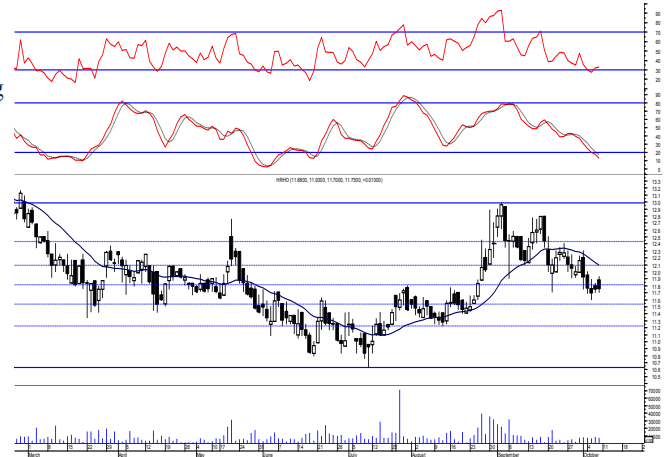


**Hermes Holding (HRHO.CA):**

Prices remained narrowly flat closing slightly positive leaving levels the same and so for our outlook.

Existing positions are advised to hold keeping stops placed and respected below 11.25 as any decline below will give back the hand to selling party.

Support levels: 11.70, 11.25  
 Resistance levels: 12.10, (12.60-12.75)

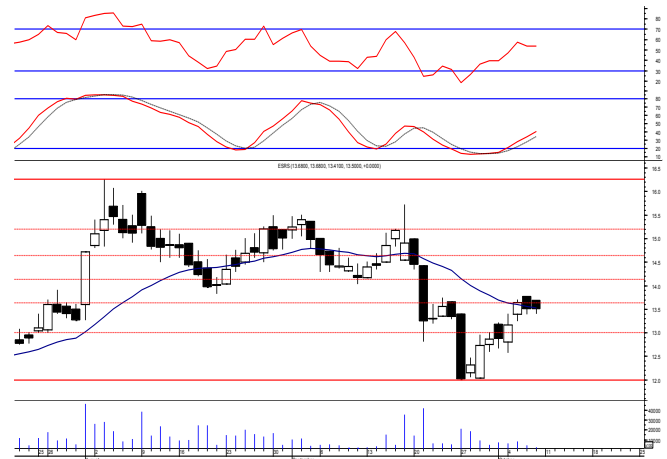


**El-Ezz steel rebar's' (ESRS.CA):**

Prices remained quietly flat closing with no change keeping everything in place.

Short term traders may use the new range for short term trades keeping stop placed below the mentioned support while conservatives to wait for all key elements to be clear to react safely on.

Support levels: 13.40, 12.30  
 Resistance levels: 14.50, 15.20



**Disclaimer**

- This publication has been prepared by Blom Egypt Securities for information purposes only.
- It is not intended as an offer to buy or sell or a solicitation of an offer to buy or sell the securities mentioned.
- The information & opinions in this publication were prepared by Blom Egypt Securities research department accepts no liability or legal responsibility for losses & damages incurred arising from the use of this publication or its contents.

**Blom Egypt Securities**  
**Samir M. Azmi, CFTe, CETA**  
 Senior Technical Analyst  
[samir.azmi@blomsecurities.com](mailto:samir.azmi@blomsecurities.com)



Most active Stocks

Daily Technical Analysis Report

11 Oct, 2021

| Stock Name (Reuters' Code)                             | Close | Trend     | T1   | T2   | Support | Resistance | SL    | Triggers |       |
|--|-------|-----------|------|------|---------|------------|-------|----------|-------|
|  |       |           |      |      |         |            |       | Lower    | Upper |
| <b>Building Materials &amp; Construction</b>           |       |           |      |      |         |            |       |          |       |
| Arabian cement (ARCC.CA)                               | 3.59  | Bearish   | —    | —    | 3.45    | 4.10       | —     | —        | —     |
| El Ezz Steel Rebar's (ESRS.CA)                         | 13.50 | Dn.-Corr. | —    | —    | 13.40   | 14.50      | 11.40 | —        | —     |
| GB auto (AUTO.CA)                                      | 4.01  | Dn.-Corr. | —    | —    | 3.95    | 4.20       | 3.75  | —        | —     |
| Orascom construction (ORAS.CA)                         | 73.01 | Dn.-Corr. | —    | —    | 71.00   | 75.20      | 68.50 | —        | —     |
| South Valley Cement (SVCE.CA)                          | 1.835 | Bearish   | —    | —    | 1.70    | 1.95       | —     | —        | —     |
| Elsweddy Cables (SWDY.CA)                              | 7.86  | UP-Corr.  | —    | —    | 7.90    | 8.35       | 7.90  | —        | —     |
| Upper Egypt general contracting (UEGC.CA)              | 0.706 | Up-Corr.  | —    | —    | 0.685   | 0.725      | 0.672 | —        | —     |
| <b>Chemicals</b>                                       |       |           |      |      |         |            |       |          |       |
| Abu-Qir fertilizers (ABUK.CA)                          | 19.80 | Up-Corr.  | —    | —    | 19.70   | 21.00      | 18.30 | —        | —     |
| Egyptian Financial & Indust. (EFIC.CA)                 | 12.59 | Up-Corr.  | —    | —    | 12.60   | 13.40      | 12.10 | —        | —     |
| Egyptian chemical industries-Kima (EGCH.CA)            | 3.80  | Bearish   | —    | —    | 3.50    | 3.77       | —     | —        | —     |
| <b>Communications</b>                                  |       |           |      |      |         |            |       |          |       |
| Fawry for banking tech. & electronic payment (FWRY.CA) | 15.10 | Up-Corr.  | —    | —    | 14.90   | 15.90      | 14.90 | —        | —     |
| Orascom investment holding (OIH.CA)                    | 0.244 | Dn.-Corr. | —    | —    | 0.235   | 0.25       | 0.215 | —        | —     |
| Telecom Egypt (ETEL.CA)                                | 13.15 | Dn.-Corr. | —    | —    | 12.90   | 13.85      | 12.90 | —        | —     |
| <b>Financial Services</b>                              |       |           |      |      |         |            |       |          |       |
| Abu Dhabi International Bank (ADIB.CA)                 | 14.73 | Up-Corr.  | —    | —    | 14.50   | 14.80      | 12.60 | —        | —     |
| Arabian for investments & development (AIH.CA)         | 0.443 | Up-Corr.  | —    | —    | 0.445   | 0.477      | 0.403 | —        | —     |
| Amer holding group (AMER.CA)                           | 0.876 | Up-Corr.  | —    | —    | 0.825   | 0.91       | 0.78  | —        | —     |
| Commercial International Bank (COMI.CA)                | 43.81 | Up-Corr.  | —    | —    | 43.50   | 44.70      | 41.00 | —        | —     |
| Export development bank of Egypt (EXPA.CA)             | 9.42  | Up-Corr.  | —    | —    | 9.15    | 10.00      | 9.15  | —        | —     |
| <b>Holding Companies</b>                               |       |           |      |      |         |            |       |          |       |
| Citadel capital (CCAP.CA)                              | 1.164 | Up-Corr.  | —    | —    | 1.09    | 1.16       | 1.09  | —        | —     |
| Hermes Holding (HRHO.CA)                               | 11.75 | Dn.-Corr. | —    | —    | 11.70   | 12.10      | 11.25 | —        | —     |
| Kuwaiti Holding (EKHO.CA)                              | 1.24  | Bullish   | 1.23 | 1.39 | 1.145   | 1.23       | 1.11  | —        | —     |
| MM group for industry & international trade (MTIE.CA)  | 6.50  | Bearish   | —    | —    | 6.20    | 6.70       | —     | —        | —     |
| Orascom financial holding (OFH.CA)                     | 0.242 | Bearish   | —    | —    | 0.23    | 0.26       | —     | —        | —     |
| Pioneers holding (PIOH.CA)                             | N/A   | Up-Corr.  | —    | —    | 5.75    | 6.10       | 5.05  | —        | —     |
| <b>Housing &amp; Real Estate</b>                       |       |           |      |      |         |            |       |          |       |
| Egyptian For Tourism Resorts (EGTS.CA)                 | 1.703 | Bearish   | —    | —    | 1.625   | 1.77       | —     | —        | —     |
| Elshams housing (ELSH.CA)                              | 11.29 | Up-Corr.  | —    | —    | 10.00   | 12.10      | 10.00 | —        | —     |
| Emaar holding (EMFD.CA)                                | 2.34  | Dn.-Corr. | —    | —    | 2.28    | 2.38       | 2.28  | —        | —     |
| Heliopolis housing & development (HELI.CA)             | 4.90  | Dn.-Corr. | —    | —    | 4.85    | 5.05       | 4.85  | —        | —     |
| Medinet Nasr for housing & Deve. (MNHD.CA)             | 2.63  | Bearish   | —    | —    | 2.53    | 2.73       | —     | —        | —     |
| 6th. October Deve. Inv. (OCDI.CA)                      | 18.31 | Dn.-Corr. | —    | —    | 17.90   | 18.60      | 16.90 | —        | —     |
| Palm hills development Co. (PHDC.CA)                   | 1.921 | Dn.-Corr. | —    | —    | 1.90    | 1.96       | 1.73  | —        | —     |
| Talaat Mustafa group holding (TMGH.CA)                 | 7.29  | Dn.-Corr. | —    | —    | 6.90    | 7.50       | 6.90  | —        | —     |
| <b>Mining &amp; Gas</b>                                |       |           |      |      |         |            |       |          |       |
| Alexandria Mineral Oils Co. (AMOC.CA)                  | 4.00  | Dn.-Corr. | —    | —    | 3.90    | 4.02       | 3.20  | —        | —     |
| Sidi Kerir Petrochemicals (SKPC.CA)                    | 9.24  | Bearish   | —    | —    | 8.65    | 9.30       | —     | —        | —     |
| <b>Textiles &amp; Clothes</b>                          |       |           |      |      |         |            |       |          |       |
| Arab Co. for asset management & Deve. (ACAMD.CA)       | 0.551 | Up-Corr.  | —    | —    | 0.54    | 0.575      | 0.54  | —        | —     |
| Arab cotton ginning (ACGC.CA)                          | 1.66  | Bearish   | —    | —    | 1.615   | 1.70       | —     | —        | —     |
| Oriental Weavers (ORWE.CA)                             | 8.55  | Dn.-Corr. | —    | —    | 8.55    | 8.90       | 7.50  | —        | —     |
| <b>Other Sectors</b>                                   |       |           |      |      |         |            |       |          |       |
| Egyptian Media Production City (MPRC.CA)               | 4.43  | Bearish   | —    | —    | 5.04    | 5.60       | —     | —        | —     |
| Egyptian Transport - Egytrans (ETRS.CA)                | 13.79 | Up-Corr.  | —    | —    | 13.60   | 14.55      | 12.50 | —        | —     |
| Orascom holding development (ORHD.CA)                  | 4.80  | Up-Corr.  | —    | —    | 4.85    | 5.05       | 4.64  | —        | —     |
| United Arab Shipping (UASG.CA)                         | 1.328 | Up-Corr.  | —    | —    | 1.21    | 1.34       | 1.05  | —        | —     |

Disclaimer

- This publication has been prepared by Blom Egypt Securities for information purposes only.
- It is not intended as an offer to buy or sell or a solicitation of an offer to buy or sell the securities mentioned.
- The information & opinions in this publication were prepared by Blom Egypt Securities research department accepts no liability or legal responsibility for losses & damages incurred arising from the use of this publication or its contents.

**Blom Egypt Securities**  
Samir M. Azmi, CFTe, CETA  
Senior Technical Analyst  
samir.azmi@blomsecurities.com



**Guidelines for using BLOM daily Technical Analysis Report**

|                            |   |
|----------------------------|---|
| <b><u>Close:</u></b>       | Is recorded as the last trade in the session.   |
| <b><u>Trend:</u></b>       |   |
| <b>Bullish :</b>           | The strategy is to buy the dips.  |
| <b>Bearish :</b>           | The strategy is to sell the rallies.  |
| <b>Flat :</b>              | The strategy is to trade the range between the triggers.  |
| <b>Up-Corr. :</b>          | A move against the major trend when it is down.   |
| <b>Dn.-Corr. :</b>         | A move against the major trend when it is up.   |
| <b><u>Targets :</u></b>    | Take some profit by reducing a portion of the position whenever a price target is been hit.   |
| <b><u>Support :</u></b>    | A level below market price (previous lows) where buyers showed strength, in a bull market buy near the support and don't sell on the resistance. A break below the Support is considered to be a bearish sign.            |
| <b><u>Resistance :</u></b> | A level above market price (previous highs) where sellers showed strength, in a bear market sell near the resistance level and don't buy on the support. A break above the resistance is considered to be a bullish sign. |
| <b><u>Stop Loss :</u></b>  | Must exit the current position whenever the closing price is (1% to 2%) below the stop loss and confirmed by volume.  |
| <b><u>Triggers :</u></b>   | The range between the lower trigger and the upper is used for trading, break of any of them, the move would continue in the same direction.   |
| <b><u>Yellow rows:</u></b> | indication that the stock closed below/above support, stop-loss, or resistance but the break is not confirmed yet.  |

**Disclaimer**

- This publication has been prepared by Blom Egypt Securities for information purposes only.
- It is not intended as an offer to buy or sell or a solicitation of an offer to buy or sell the securities mentioned.
- The information & opinions in this publication were prepared by Blom Egypt Securities research department accepts no liability or legal responsibility for losses & damages incurred arising from the use of this publication or its contents.

**Blom Egypt Securities**  
**Samir M. Azmi, CFTe, CETA**  
**Senior Technical Analyst**  
**samir.azmi@blomsecurities.com**