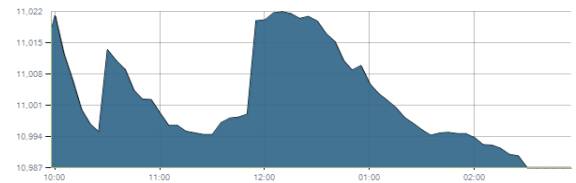




Indices intraday trends

EGX 30

مؤشر EGX 30  
اليوم - 10/12/2020

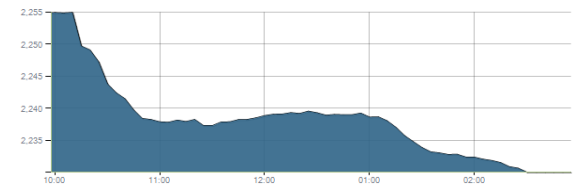


Key Levels

|           |       |              |             |
|-----------|-------|--------------|-------------|
| Support 1 | 10750 | Resistance 1 | 10900-11100 |
| Support 2 | 10550 | Resistance 2 | 11500       |

EGX 50 EWI

مؤشر EGX 50 EWI  
اليوم - 10/12/2020

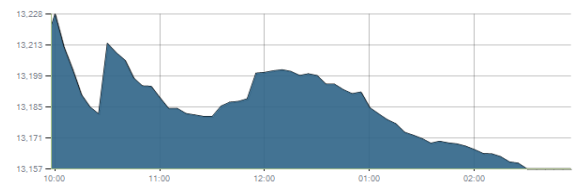


Key Levels

|           |      |              |      |
|-----------|------|--------------|------|
| Close     |      | 2230.09      |      |
| Support 1 | 2200 | Resistance 1 | 2300 |
| Support 2 | 2130 | Resistance 2 | 2400 |

EGX 30 capped

مؤشر EGX 30 Capped  
اليوم - 10/12/2020



Key Levels

|           |       |              |       |
|-----------|-------|--------------|-------|
| Close     |       | 13157.04     |       |
| Support 1 | 13035 | Resistance 1 | 13455 |
| Support 2 | 12790 | Resistance 2 | 13755 |



Market Commentary:

The EGX30 remained flat as balanced trading still dominates closing slightly negative within the resistance zone 10900-11100 leaving everything in place. As we said, clearing the mentioned zone only will confirm the bull case, while being unable to clear or breaking below will keep bears in control.

Thus, we recommend to stay on cash till a confirmed buy signal is triggered.

Risk takers who decides holding their positons are advised to keep close stops placed and respected.

|               |                     |              |          |
|---------------|---------------------|--------------|----------|
| Close         | 10987.39            | Trend        | Up-Corr. |
| Pre. Close    | 11018.09            | Target 1     | —        |
| Change        | ↓ 30.70 ( 0.28% )   | Target 2     | —        |
| Day's range   | 11022.77 — 10987.35 | Stop-loss    | 10425    |
| 52week's high | 14831.20            | 52week's low | 8113.82  |

Disclaimer

- This publication has been prepared by Blom Egypt Securities for information purposes only.
- It is not intended as an offer to buy or sell or a solicitation of an offer to buy or sell the securities mentioned.
- The information & opinions in this publication were prepared by Blom Egypt Securities research department accepts no liability or legal responsibility for losses & damages incurred arising from the use of this publication or its contents.

**Blom Egypt Securities**  
Samir M. Azmi, CFTe, CETA  
Senior Technical Analyst  
samir.azmi@blomsecurities.com



**Commercial international bank (COMI.CA):**

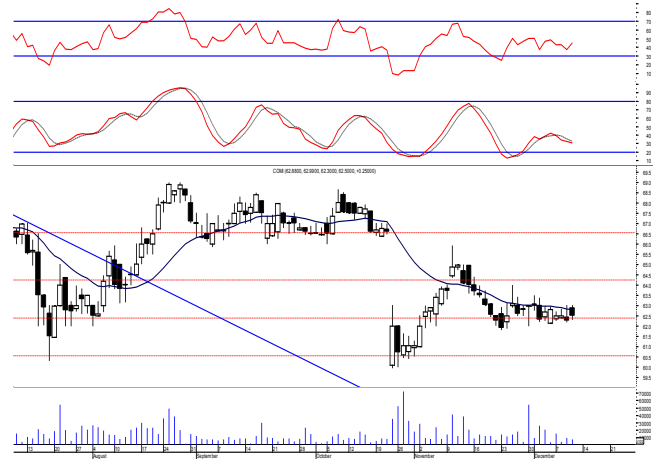
Prices closed slightly positive after quiet trading performance keeping levels unchanged and so for our outlook.

We still recommend traded positions to stay on cash and wait for a confirmed buy signal to react safely on.

While held positions are advised to activate their stops and stay on cash.

Support levels: 60.00, 58.50

Resistance levels: 63.00, 66.00



**Hermes Holding (HRHO.CA):**

Prices closed below the support level 13.50 turning it into resistance failing to continue any rebounding attempt within the session.

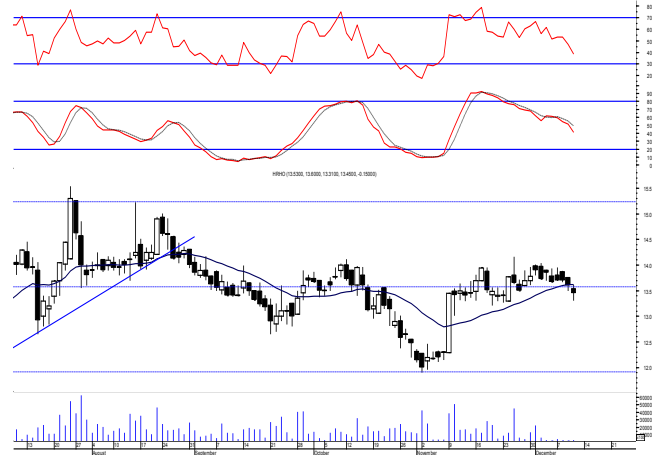
We still recommend to stay on cash and wait for a confirmed buy signal to react safely on.

Buyers will confirm their strength by only clearing the resistance level 14.10.

Any held positions should watch the mentioned support as it represents an important defensive line.

Support levels: 12.65, 11.90

Resistance levels: 13.50, 14.10



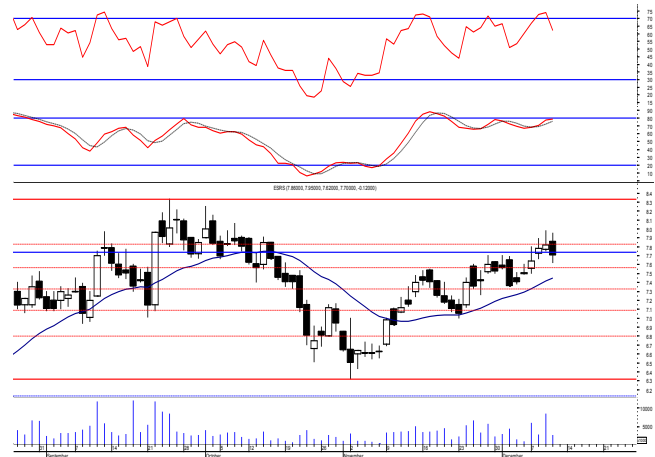
**El-Ezz steel rebar's' (ESRS.CA):**

Prices witnessed a downward move as selling pressure continued closing near the low within the mentioned zone confirming keeping everything in place.

Short term trades opened recently are advised to use the mentioned resistance zone to close on. While any held positions to keep close stops placed and respected.

Support levels: 7.00, 6.40

Resistance levels: 7.55-7.75, 8.30



**Disclaimer**

- This publication has been prepared by Blom Egypt Securities for information purposes only.
- It is not intended as an offer to buy or sell or a solicitation of an offer to buy or sell the securities mentioned.
- The information & opinions in this publication were prepared by Blom Egypt Securities research department accepts no liability or legal responsibility for losses & damages incurred arising from the use of this publication or its contents.

**Blom Egypt Securities**  
**Samir M. Azmi, CFTe, CETA**  
 Senior Technical Analyst  
[samir.azmi@blomsecurities.com](mailto:samir.azmi@blomsecurities.com)



بلوم مصر لتداول الأوراق المالية

BLOM EGYPT SECURITIES



Most active Stocks

Daily Technical Analysis Report

13 Dec, 2020

| Stock Name (Reuters' Code)                             | Close | Trend     | T1     | T2     | Support | Resistance | SL    | Triggers |       |
|--|-------|-----------|--------|--------|---------|------------|-------|----------|-------|
|  |       |           |        |        |         |            |       | Lower    | Upper |
| <b>Building Materials &amp; Construction</b>           |       |           |        |        |         |            |       |          |       |
| Arabian cement (ARCC.CA)                               | 3.19  | Up-Corr.  | —      | —      | 3.15    | 3.40       | 3.05  | —        | —     |
| El Ezz Steel Rebar's (ESRS.CA)                         | 7.70  | Up-Corr.  | —      | —      | 7.00    | 7.75       | 6.40  | —        | —     |
| Egyptian iron & steel; Co. (IRON.CA)                   | 3.51  | Dn.-Corr. | —      | —      | 3.50    | 3.70       | 2.80  | —        | —     |
| GB auto (AUTO.CA)                                      | 3.10  | Dn.-Corr. | —      | —      | 3.00    | 3.15       | 2.80  | —        | —     |
| Orascom construction (ORAS.CA)                         | 85.00 | Bullish   | 81.00√ | 85.50√ | 81.00   | 85.50      | 67.50 | —        | —     |
| South Valley Cement (SVCE.CA)                          | 1.798 | Up-Corr.  | —      | —      | 1.75    | 1.93       | 1.48  | —        | —     |
| Elswedey Cables (SWDY.CA)                              | 8.90  | Bullish   | 8.95√  | 9.30√  | 8.50    | 9.30       | 7.75  | —        | —     |
| Upper Egypt general contracting (UEGC.CA)              | 0.809 | Up-Corr.  | —      | —      | 0.80    | 0.855      | 0.74  | —        | —     |
| <b>Chemicals</b>                                       |       |           |        |        |         |            |       |          |       |
| Abu-Qir fertilizers (ABUK.CA)                          | 21.01 | Bullish   | 21.60√ | 22.80  | 20.50   | 21.60      | 19.20 | —        | —     |
| Egyptian Financial & Indust. (EFIC.CA)                 | 12.80 | Dn.-Corr. | —      | —      | 12.65   | 13.30      | 12.20 | —        | —     |
| Egyptian chemical industries-Kima (EGCH.CA)            | 4.33  | Up-Corr.  | —      | —      | 4.20    | 4.40       | 3.80  | —        | —     |
| <b>Communications</b>                                  |       |           |        |        |         |            |       |          |       |
| Orascom investment holding (OIH.CA)                    | 0.555 | Up-Corr.  | —      | —      | 0.55    | 0.59       | 0.49  | —        | —     |
| Telecom Egypt (ETEL.CA)                                | 12.40 | Up-Corr.  | —      | —      | 12.20   | 13.00      | 11.40 | —        | —     |
| <b>Financial Services</b>                              |       |           |        |        |         |            |       |          |       |
| Abu Dhabi International Bank (ADIB.CA)                 | 12.06 | Dn.-Corr. | —      | —      | 12.00   | 12.40      | 11.20 | —        | —     |
| Arabian for investments & development (AIH.CA)         | 0.674 | Bullish   | 0.71   | 0.75   | 0.645   | 0.71       | 0.59  | —        | —     |
| Amer holding group (AMER.CA)                           | 1.063 | Bullish   | 1.14   | 1.25   | 0.98    | 1.14       | 0.74  | —        | —     |
| Commercial International Bank (COMI.CA)                | 62.50 | Up-Corr.  | —      | —      | 60.00   | 63.00      | 60.00 | —        | —     |
| Export development bank of Egypt (EXPA.CA)             | 16.50 | Bullish   | 17.50√ | 19.30  | 15.90   | 17.50      | 14.35 | —        | —     |
| <b>Holding Companies</b>                               |       |           |        |        |         |            |       |          |       |
| CI capital holding for financial investments (CICH.CA) | 3.91  | Up-Corr.  | —      | —      | 3.75    | 4.00       | 3.55  | —        | —     |
| Citadel capital (CCAP.CA)                              | 1.469 | Up-Corr.  | —      | —      | 1.45    | 1.53       | 1.39  | —        | —     |
| Hermes Holding (HRHO.CA)                               | 13.45 | Up-Corr.  | —      | —      | 12.65   | 13.50      | 11.90 | —        | —     |
| Kuwaiti Holding (EKHO.CA)                              | 1.032 | Up-Corr.  | —      | —      | 0.97    | 1.04       | 0.97  | —        | —     |
| Pioneers holding (PIOH.CA)                             | 4.07  | Up-Corr.  | —      | —      | 3.85    | 4.15       | 3.70  | —        | —     |
| <b>Housing &amp; Real Estate</b>                       |       |           |        |        |         |            |       |          |       |
| Egyptian For Tourism Resorts (EGTS.CA)                 | 1.512 | Up-Corr.  | —      | —      | 1.50    | 1.60       | 1.30  | —        | —     |
| Elshams housing (ELSH.CA)                              | 4.84  | Up-Corr.  | —      | —      | 4.60    | 5.05       | 4.15  | —        | —     |
| Emaar holding (EMFD.CA)                                | 2.47  | Dn.-Corr. | —      | —      | 2.40    | 2.55       | 2.13  | —        | —     |
| Heliopolis housing & development (HELLI.CA)            | 6.20  | Dn.-Corr. | —      | —      | 5.90    | 6.40       | 5.90  | —        | —     |
| Medinet Nasr for housing & Deve. (MNHD.CA)             | 3.75  | Up-Corr.  | —      | —      | 3.60    | 3.90       | 3.45  | —        | —     |
| 6th. October Deve. Inv. (OCDI.CA)                      | 14.98 | Bullish   | 15.75  | 16.90  | 14.80   | 15.75      | 13.90 | —        | —     |
| Palm hills development Co. (PHDC.CA)                   | 1.41  | Up-Corr.  | —      | —      | 1.40    | 1.52       | 1.18  | —        | —     |
| Talaat Mustafa group holding (TMGH.CA)                 | 6.78  | Up-Corr.  | —      | —      | 6.80    | 7.30       | 6.30  | —        | —     |
| <b>Mining &amp; Gas</b>                                |       |           |        |        |         |            |       |          |       |
| Alexandria Mineral Oils Co. (AMOC.CA)                  | 3.15  | Bullish   | 3.15√  | 3.35   | 2.94    | 3.15       | 2.60  | —        | —     |
| Sidi Kerir Petrochemicals (SKPC.CA)                    | 8.20  | Up-Corr.  | —      | —      | 8.00    | 8.60       | 6.80  | —        | —     |
| <b>Textiles &amp; Clothes</b>                          |       |           |        |        |         |            |       |          |       |
| Arab Co. for asset management & Deve. (ACAMD.CA)       | 5.90  | Dn.-Corr. | —      | —      | 5.50    | 5.90       | 5.50  | —        | —     |
| Arab cotton ginning (ACGC.CA)                          | 3.14  | Up-Corr.  | —      | —      | 3.05    | 3.25       | 2.40  | —        | —     |
| Oriental Weavers (ORWE.CA)                             | 7.59  | Bullish   | 7.45√  | 7.90√  | 7.45    | 7.90       | 7.00  | —        | —     |
| <b>Other Sectors</b>                                   |       |           |        |        |         |            |       |          |       |
| Egyptian Media Production City (MPRC.CA)               | 5.85  | Up-Corr.  | —      | —      | 5.65    | 6.20       | 5.40  | —        | —     |
| Egyptian Transport - Egytrans (ETRS.CA)                | 10.00 | Up-Corr.  | —      | —      | 10.10   | 11.00      | 9.10  | —        | —     |
| Orascom holding development (ORHD.CA)                  | 5.00  | Bullish   | 5.35   | 5.90   | 4.85    | 5.35       | 4.35  | —        | —     |
| United Arab Shipping (UASG.CA)                         | 1.12  | Up-Corr.  | —      | —      | 1.08    | 1.17       | 0.90  | —        | —     |

Disclaimer

- This publication has been prepared by Blom Egypt Securities for information purposes only.
- It is not intended as an offer to buy or sell or a solicitation of an offer to buy or sell the securities mentioned.
- The information & opinions in this publication were prepared by Blom Egypt Securities research department accepts no liability or legal responsibility for losses & damages incurred arising from the use of this publication or its contents.

**Blom Egypt Securities**  
**Samir M. Azmi, CFTe, CETA**  
**Senior Technical Analyst**  
**samir.azmi@blomsecurities.com**



**Guidelines for using BLOM daily Technical Analysis Report**

|                            |   |
|----------------------------|---|
| <b><u>Close:</u></b>       | Is recorded as the last trade in the session.   |
| <b><u>Trend:</u></b>       |   |
| <b>Bullish :</b>           | The strategy is to buy the dips.  |
| <b>Bearish :</b>           | The strategy is to sell the rallies.  |
| <b>Flat :</b>              | The strategy is to trade the range between the triggers.  |
| <b>Up-Corr. :</b>          | A move against the major trend when it is down.   |
| <b>Dn.-Corr. :</b>         | A move against the major trend when it is up.   |
| <b><u>Targets :</u></b>    | Take some profit by reducing a portion of the position whenever a price target is been hit.   |
| <b><u>Support :</u></b>    | A level below market price (previous lows) where buyers showed strength, in a bull market buy near the support and don't sell on the resistance. A break below the Support is considered to be a bearish sign.            |
| <b><u>Resistance :</u></b> | A level above market price (previous highs) where sellers showed strength, in a bear market sell near the resistance level and don't buy on the support. A break above the resistance is considered to be a bullish sign. |
| <b><u>Stop Loss :</u></b>  | Must exit the current position whenever the closing price is (1% to 2%) below the stop loss and confirmed by volume.  |
| <b><u>Triggers :</u></b>   | The range between the lower trigger and the upper is used for trading, break of any of them, the move would continue in the same direction.   |
| <b><u>Yellow rows:</u></b> | indication that the stock closed below/above support, stop-loss, or resistance but the break is not confirmed yet.  |

**Disclaimer**

- This publication has been prepared by Blom Egypt Securities for information purposes only.
- It is not intended as an offer to buy or sell or a solicitation of an offer to buy or sell the securities mentioned.
- The information & opinions in this publication were prepared by Blom Egypt Securities research department accepts no liability or legal responsibility for losses & damages incurred arising from the use of this publication or its contents.

**Blom Egypt Securities**  
**Samir M. Azmi, CFTe, CETA**  
**Senior Technical Analyst**  
**samir.azmi@blomsecurities.com**