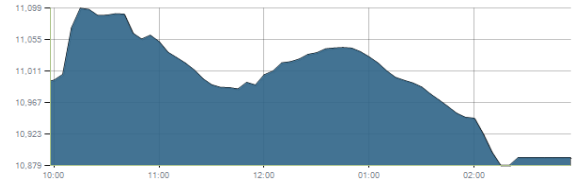




Indices intraday trends

EGX 30

مؤشر EGX 30
اليوم - 19/09/2021

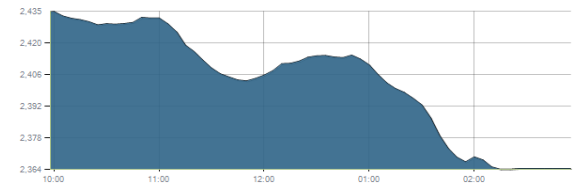


Key Levels

Support 1	10950-10850	Resistance 1	11200
Support 2	10680	Resistance 2	11430

EGX 50 EWI

مؤشر EGX 50 EWI
اليوم - 19/09/2021

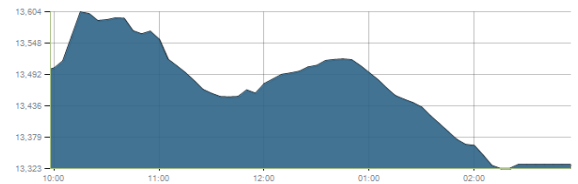


Key Levels

Close		2364.67	
Support 1	2385	Resistance 1	2450
Support 2	2310	Resistance 2	2560

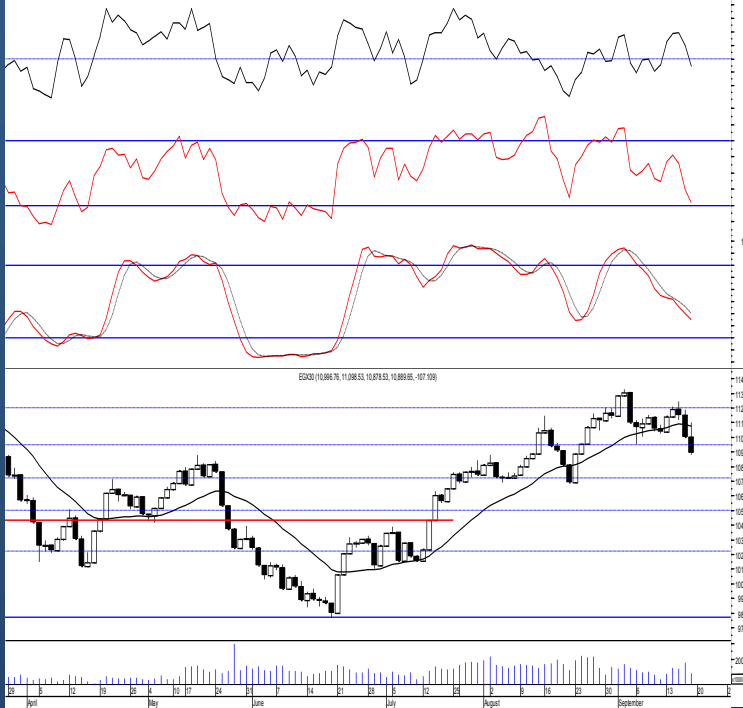
EGX 30 capped

مؤشر EGX 30 Capped
اليوم - 19/09/2021



Key Levels

Close		13330.16	
Support 1	13130	Resistance 1	13400
Support 2	12940	Resistance 2	13800



Market Commentary:

The EGX30 continued lower as selling pressure dominated most of the session in most of the stocks pulling the index back closing near the lower boundary of our mentioned support zone. It's highly recommended watching current levels as any violation will lead to further decline to the next important support 10680 which represents our short term stop loss level. Yet, levels are still the same and so for our outlook, the upside expectations will only be by clearing 11200. It is very important to watch any violated stop to avoid any further decline while new positions are advised to wait for a confirmed buy signal to react safely on.

Close	10889.65	Trend	Up-Corr.
Pre. Close	10996.76	Target 1	---
Change	↓ 107.11 (0.97%)	Target 2	---
Day's range	11098.53 — 10878.53	Stop-loss	10680
52week's high	11675.69	52week's low	9769.18.18

Disclaimer

- This publication has been prepared by Blom Egypt Securities for information purposes only.
- It is not intended as an offer to buy or sell or a solicitation of an offer to buy or sell the securities mentioned.
- The information & opinions in this publication were prepared by Blom Egypt Securities research department accepts no liability or legal responsibility for losses & damages incurred arising from the use of this publication or its contents.

Blom Egypt Securities
Samir M. Azmi, CFTe, CETA
Senior Technical Analyst
samir.azmi@blomsecurities.com

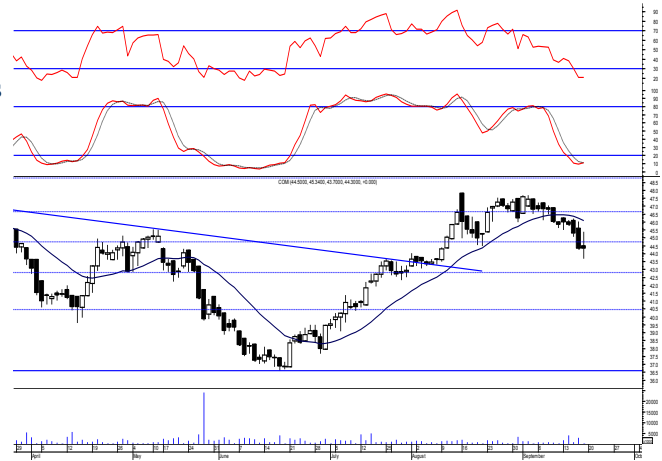


Commercial international bank (COMI.CA):

Prices fell sharply ahead of trading before rebounding process takes place closing back near the session's mid range with no change. Conservative traders are advised stop trading on current levels while risk takers may buy partially for quick trades.

We overall recommend staying on cash till the view is clear so that we can react safely on.

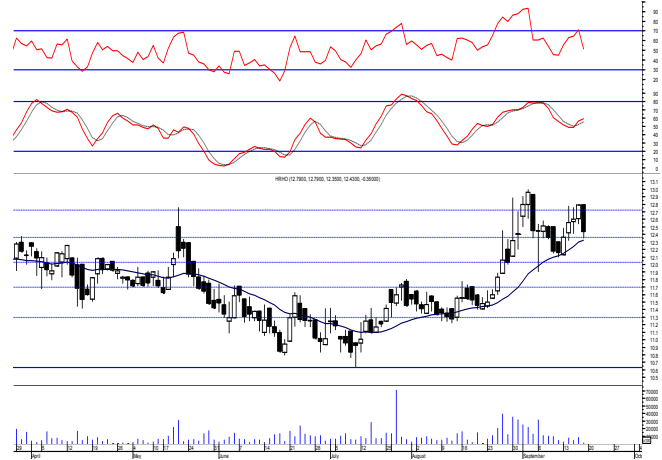
Support levels: 44.70, 42.30
Resistance levels: 46.65, 48.80



Hermes Holding (HRHO.CA):

Prices failed to confirm clearing the mentioned resistance zone as selling pressure managed to drag prices back below so levels are considered the same and so for our outlook. Existing positions are advised to hold keeping stops placed and respected below 11.25 as any decline below will give back the hand to selling party.

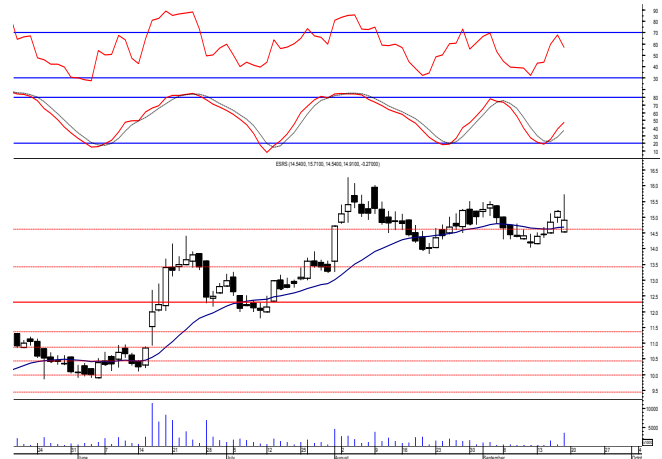
Support levels: 12.10, 11.70
Resistance levels: (12.60-12.75), (13.25-13.40)



El-Ezz steel rebar's' (ESRS.CA):

Prices witnessed a sharp upward move ahead of trading before selling pressure strongly takes place losing most of the gains closing negative near the low so again confirmation is still needed to turn the mentioned zone into support so everything is considered in place. As we said, our Protective stop should be activated as reaching the previous reached low is expected near 13.80 any may extend reaching our support level 13.40. New trades are advised to wait for a confirmed buy signal to react safely on.

Support levels: 13.40, 12.30
Resistance levels: (14.40-14.65), 16.00



Disclaimer

- This publication has been prepared by Blom Egypt Securities for information purposes only.
- It is not intended as an offer to buy or sell or a solicitation of an offer to buy or sell the securities mentioned.
- The information & opinions in this publication were prepared by Blom Egypt Securities research department accepts no liability or legal responsibility for losses & damages incurred arising from the use of this publication or its contents.

Blom Egypt Securities
Samir M. Azmi, CFTe, CETA
Senior Technical Analyst
samir.azmi@blomsecurities.com



بلوم مصر لتداول الأوراق المالية

BLOM EGYPT SECURITIES



Most active Stocks

Daily Technical Analysis Report

20 Sep, 2021

Stock Name (Reuters' Code)	Close	Trend	T1	T2	Support	Resistance	SL	Triggers	
								Lower	Upper
Building Materials & Construction									
Arabian cement (ARCC.CA)	4.50	Bearish	—	—	4.10	4.60	—	—	—
El Ezz Steel Rebar's (ESRS.CA)	14.91	Dn.-Corr.	—	—	13.40	14.65	11.40	—	—
GB auto (AUTO.CA)	4.08	Dn.-Corr.	—	—	3.95	4.20	3.75	—	—
Orascom construction (ORAS.CA)	72.86	Dn.-Corr.	—	—	71.00	75.20	68.50	—	—
South Valley Cement (SVCE.CA)	2.08	Dn.-Corr.	—	—	1.95	2.20	1.95	—	—
Elsweddy Cables (SWDY.CA)	8.52	UP-Corr.	—	—	8.30	8.70	7.90	—	—
Upper Egypt general contracting (UEGC.CA)	0.751	Dn.-Corr.	—	—	0.73	0.77	0.73	—	—
Chemicals									
Abu-Qir fertilizers (ABUK.CA)	19.33	Up-Corr.	—	—	18.30	19.70	18.30	—	—
Egyptian Financial & Indust. (EFIC.CA)	12.98	Dn.-Corr.	—	—	12.85	14.00	12.85	—	—
Egyptian chemical industries-Kima (EGCH.CA)	4.15	Bearish	—	—	3.98	4.20	—	—	—
Communications									
Fawry for banking tech. & electronic payment (FWRY.CA)	15.31	Bearish	—	—	14.90	16.45	—	—	—
Orascom investment holding (OIH.CA)	0.249	Dn.-Corr.	—	—	0.25	0.278	0.192	—	—
Telecom Egypt (ETEL.CA)	14.65	Dn.-Corr.	15.20√	16.60	14.30	15.70	12.90	—	—
Financial Services									
Abu Dhabi International Bank (ADIB.CA)	13.92	Up-Corr.	—	—	13.65	14.75	13.65	—	—
Arabian for investments & development (AIH.CA)	0.466	Up-Corr.	—	—	0.44	0.485	0.403	—	—
Amer holding group (AMER.CA)	0.828	Up-Corr.	—	—	0.825	0.87	0.78	—	—
Commercial International Bank (COMI.CA)	44.30	Dn.-Corr.	—	—	44.70	46.65	42.30	—	—
Export development bank of Egypt (EXPA.CA)	10.23	Dn.-Corr.	—	—	9.90	10.55	9.90	—	—
Holding Companies									
Citadel capital (CCAP.CA)	1.188	Up-Corr.	—	—	1.16	1.23	1.09	—	—
Hermes Holding (HRHO.CA)	12.43	Dn.-Corr.	—	—	12.10	12.75	11.25	—	—
Kuwaiti Holding (EKHO.CA)	1.157	Bullish	1.13√	1.19	1.15	1.23	0.96	—	—
MM group for industry & international trade (MTIE.CA)	7.34	Dn.-Corr.	—	—	7.30	7.80	7.30	—	—
Orascom financial holding (OFH.CA)	0.273	Dn.-Corr.	—	—	0.275	0.31	0.275	—	—
Pioneers holding (PIOH.CA)	5.81	Dn.-Corr.	—	—	5.75	6.10	5.45	—	—
Housing & Real Estate									
Egyptian For Tourism Resorts (EGTS.CA)	2.11	Dn.-Corr.	—	—	2.10	2.37	1.95	—	—
Elshams housing (ELSH.CA)	10.68	Up-Corr.	—	—	10.00	12.10	10.00	—	—
Emaar holding (EMFD.CA)	2.51	Dn.-Corr.	—	—	2.48	2.57	2.28	—	—
Heliopolis housing & development (HELI.CA)	5.56	Dn.-Corr.	—	—	5.55	5.90	4.85	—	—
Medinet Nasr for housing & Deve. (MNHD.CA)	2.92	Up-Corr.	—	—	2.90	3.05	2.90	—	—
6th. October Deve. Inv. (OCDI.CA)	18.78	Bullish	19.25√	20.40	18.55	19.25	16.90	—	—
Palm hills development Co. (PHDC.CA)	2.00	Dn.-Corr.	—	—	1.96	2.03	1.60	—	—
Talaat Mustafa group holding (TMGH.CA)	7.50	Bullish	8.20	8.90	7.50	8.00	6.90	—	—
Mining & Gas									
Alexandria Mineral Oils Co. (AMOC.CA)	3.56	Dn.-Corr.	—	—	3.50	3.62	3.20	—	—
Sidi Kerir Petrochemicals (SKPC.CA)	9.80	Bearish	—	—	9.30	10.30	—	—	—
Textiles & Clothes									
Arab Co. for asset management & Deve. (ACAMD.CA)	0.61	Up-Corr.	—	—	0.595	0.645	0.567	—	—
Arab cotton ginning (ACGC.CA)	1.829	Up-Corr.	—	—	1.77	1.95	1.70	—	—
Oriental Weavers (ORWE.CA)	8.96	Bullish	9.25√	9.70	8.90	9.25	7.50	—	—
Other Sectors									
Egyptian Media Production City (MPRC.CA)	5.60	Bearish	—	—	5.55	5.90	—	—	—
Egyptian Transport - Egytrans (ETRS.CA)	13.66	Up-Corr.	—	—	13.60	14.60	13.60	—	—
Orascom holding development (ORHD.CA)	4.77	Up-Corr.	—	—	4.64	4.85	4.64	—	—
United Arab Shipping (UASG.CA)	1.151	Dn.-Corr.	—	—	1.15	1.215	1.15	—	—

Disclaimer

- This publication has been prepared by Blom Egypt Securities for information purposes only.
- It is not intended as an offer to buy or sell or a solicitation of an offer to buy or sell the securities mentioned.
- The information & opinions in this publication were prepared by Blom Egypt Securities research department accepts no liability or legal responsibility for losses & damages incurred arising from the use of this publication or its contents.

Blom Egypt Securities
Samir M. Azmi, CFTe, CETA
Senior Technical Analyst
samir.azmi@blomsecurities.com



Guidelines for using BLOM daily Technical Analysis Report

<u>Close:</u>	Is recorded as the last trade in the session.
<u>Trend:</u>	
Bullish :	The strategy is to buy the dips.
Bearish :	The strategy is to sell the rallies.
Flat :	The strategy is to trade the range between the triggers.
Up-Corr. :	A move against the major trend when it is down.
Dn.-Corr. :	A move against the major trend when it is up.
<u>Targets :</u>	Take some profit by reducing a portion of the position whenever a price target is been hit.
<u>Support :</u>	A level below market price (previous lows) where buyers showed strength, in a bull market buy near the support and don't sell on the resistance. A break below the Support is considered to be a bearish sign.
<u>Resistance :</u>	A level above market price (previous highs) where sellers showed strength, in a bear market sell near the resistance level and don't buy on the support. A break above the resistance is considered to be a bullish sign.
<u>Stop Loss :</u>	Must exit the current position whenever the closing price is (1% to 2%) below the stop loss and confirmed by volume.
<u>Triggers :</u>	The range between the lower trigger and the upper is used for trading, break of any of them, the move would continue in the same direction.
<u>Yellow rows:</u>	indication that the stock closed below/above support, stop-loss, or resistance but the break is not confirmed yet.

Disclaimer

- This publication has been prepared by Blom Egypt Securities for information purposes only.
- It is not intended as an offer to buy or sell or a solicitation of an offer to buy or sell the securities mentioned.
- The information & opinions in this publication were prepared by Blom Egypt Securities research department accepts no liability or legal responsibility for losses & damages incurred arising from the use of this publication or its contents.

Blom Egypt Securities
Samir M. Azmi, CFTe, CETA
Senior Technical Analyst
samir.azmi@blomsecurities.com