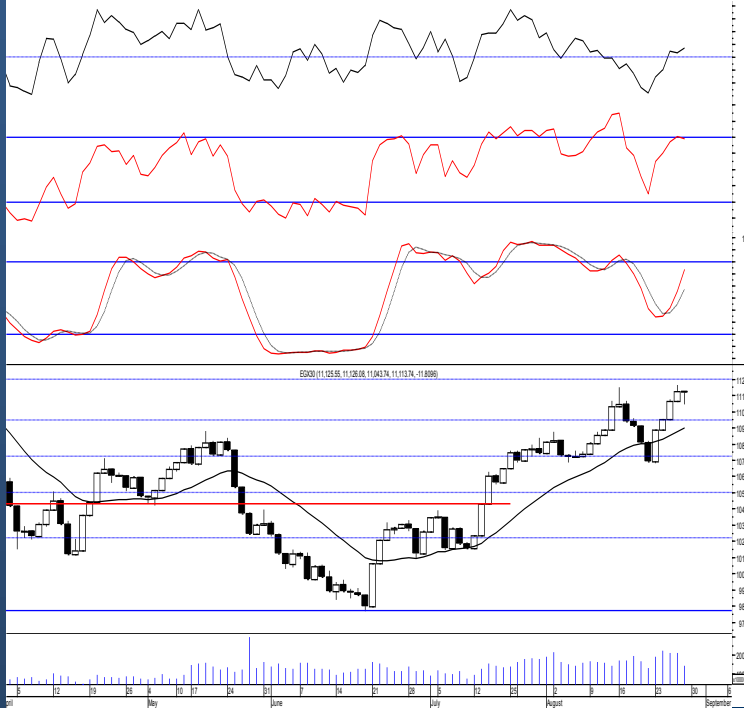




Egypt | EGX 30

Daily Technical Analysis Report

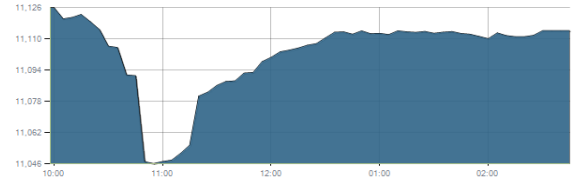
30 Aug, 2021



Indices intraday trends

EGX 30

مؤشر EGX 30
اليوم - 29/08/2021

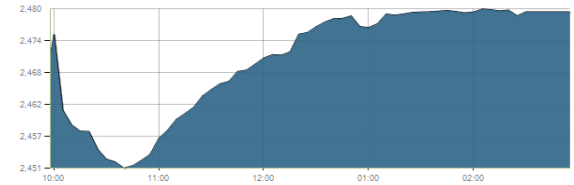


Key Levels

Support 1	10950-10850	Resistance 1	11200
Support 2	10600	Resistance 2	11430

EGX 50 EWI

مؤشر EGX 50 EWI
اليوم - 29/08/2021

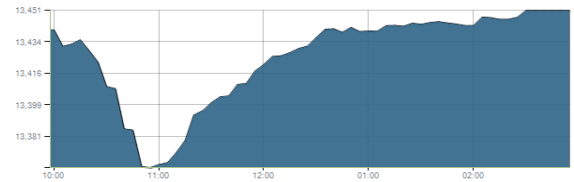


Key Levels

Close		2479.57	
Support 1	2450	Resistance 1	2500
Support 2	2370	Resistance 2	2625

EGX 30 capped

مؤشر EGX 30 Capped
اليوم - 29/08/2021



Key Levels

Close		13451.30	
Support 1	13400	Resistance 1	13800
Support 2	13130	Resistance 2	14140

Market Commentary:

The EGX30 witnessed a downward move ahead of trading before rebounding process takes place pushing the index higher gaining back most of the losses but remained in red near the high keeping levels the same and so for our outlook.

Buying process should be very selective on the stocks that are trading near supports or that managed to confirm breakout and always keep close stops placed and respected.

Existing positions are advised to use trailing stop strategy to protect profits.

Important notice should be taken into consideration, failing to continue climbing from current levels will affect technical indicators negatively in which will lead to sharp decline so stay heads-up.

Close	11113.74	Trend	Up-Corr.
Pre. Close	11125.55	Target 1	---
Change	↓ 11.81 (0.11%)	Target 2	---
Day's range	11126.08 — 11043.74	Stop-loss	9900
52week's high	11675.69	52week's low	9769.18.18

Disclaimer

- This publication has been prepared by Blom Egypt Securities for information purposes only.
- It is not intended as an offer to buy or sell or a solicitation of an offer to buy or sell the securities mentioned.
- The information & opinions in this publication were prepared by Blom Egypt Securities research department accepts no liability or legal responsibility for losses & damages incurred arising from the use of this publication or its contents.

Blom Egypt Securities
Samir M. Azmi, CFTE, CETA
Senior Technical Analyst
samir.azmi@blomsecurities.com



Commercial international bank (COMI.CA):

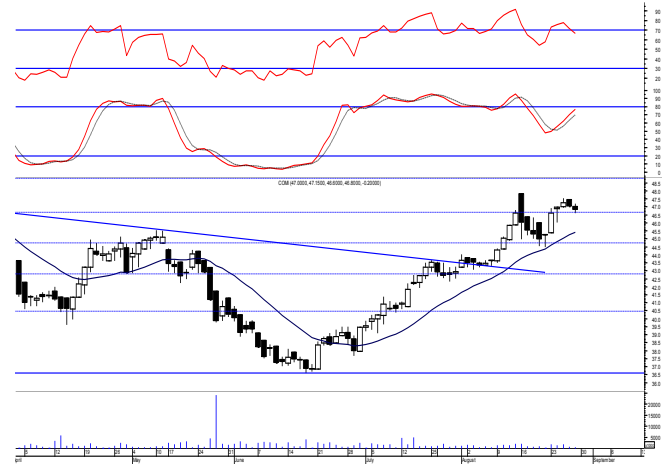
Prices remained narrowly flat as balanced trading performance dominated closing slightly negative keeping everything in place.

New positions could be opened now using the mentioned levels to trade gradually on

Trailing stop strategy should be followed to protect profits and reduce risk

Support levels: 46.65, 44.70

Resistance levels: 48.80, 51.60

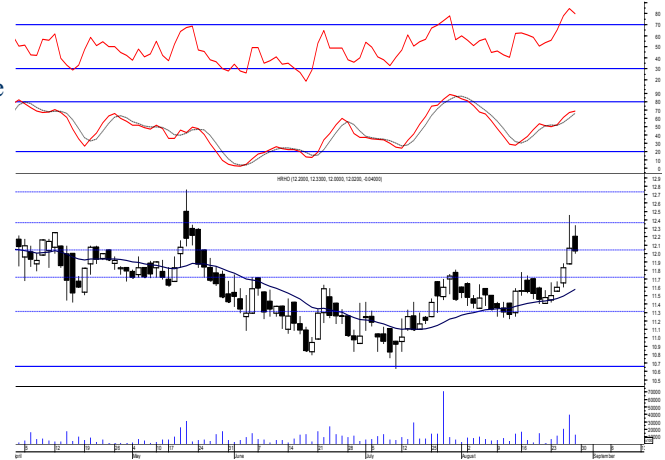


Hermes Holding (HRHO.CA):

Prices witnessed another failure attempt to clear the resistance level 12.10 as selling pressure dominated closing slightly negative within the same range. Traded positions are advised to wait for a new signal while existing to hold keeping stops placed and respected below 11.25 as any decline below will give back the hand to selling party.

Support levels: 11.70, 11.25

Resistance levels: 12.10, (12.60-12.75)



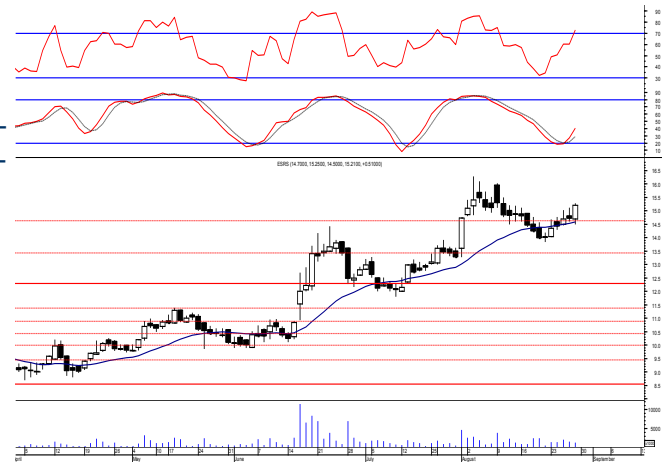
El-Ezz steel rebar's' (ESRS.CA):

Prices witnessed an upward move managing to clear the mentioned resistance zone turning it into support. By managing to clear the mentioned zone bullish sentiment is confirmed which will likely push prices higher to retest the previous reached high 16.25 where we may use the range for quick trading.

Protective stop should be placed below 14.40.

Support levels: (14.65-14.40), 13.40

Resistance levels: 16.00, 17.70



Disclaimer

- This publication has been prepared by Blom Egypt Securities for information purposes only.
- It is not intended as an offer to buy or sell or a solicitation of an offer to buy or sell the securities mentioned.
- The information & opinions in this publication were prepared by Blom Egypt Securities research department accepts no liability or legal responsibility for losses & damages incurred arising from the use of this publication or its contents.

Blom Egypt Securities
Samir M. Azmi, CFTe, CETA
Senior Technical Analyst
samir.azmi@blomsecurities.com



Most active Stocks

Daily Technical Analysis Report

30 Aug, 2021

Stock Name (Reuters' Code)	Close	Trend	T1	T2	Support	Resistance	SL	Triggers	
								Lower	Upper
Building Materials & Construction									
Arabian cement (ARCC.CA)	5.13	Dn.-Corr.	—	—	5.05	5.30	4.50	—	—
El Ezz Steel Rebar's (ESRS.CA)	15.21	Dn.-Corr.	—	—	14.40	16.00	11.40	—	—
GB auto (AUTO.CA)	4.07	Bullish	4.20√	4.45	3.95	4.20	3.75	—	—
Orascom construction (ORAS.CA)	74.44	Dn.-Corr.	—	—	71.50	74.80	68.50	—	—
South Valley Cement (SVCE.CA)	2.45	Dn.-Corr.	—	—	2.45	2.75	1.95	—	—
Elsweddy Cables (SWDY.CA)	8.85	UP-Corr.	—	—	8.60	9.00	7.40	—	—
Upper Egypt general contracting (UEGC.CA)	0.84	Bullish	0.89	0.93	0.81	0.89	0.73	—	—
Chemicals									
Abu-Qir fertilizers (ABUK.CA)	18.90	Up-Corr.	—	—	18.30	19.70	18.30	—	—
Egyptian Financial & Indust. (EFIC.CA)	14.57	Flat	—	—	—	—	12.85	14.00	15.50
Egyptian chemical industries-Kima (EGCH.CA)	4.80	Dn.-Corr.	4.45√	4.95	4.45	4.95	3.75	—	—
Communications									
Orascom investment holding (OIH.CA)	0.243	Bullish	0.232√	0.257	0.232	0.257	0.192	—	—
Telecom Egypt (ETEL.CA)	14.64	Dn.-Corr.	15.20√	16.60	14.30	15.70	12.90	—	—
Financial Services									
Abu Dhabi International Bank (ADIB.CA)	15.91	Dn.-Corr.	—	—	15.60	16.30	14.60	—	—
Arabian for investments & development (AIH.CA)	0.493	Up-Corr.	—	—	0.48	0.505	0.46	—	—
Amer holding group (AMER.CA)	0.92	Up-Corr.	—	—	0.888	0.945	0.78	—	—
Commercial International Bank (COMI.CA)	46.80	Bullish	46.65√	48.80	46.65	48.80	42.30	—	—
Export development bank of Egypt (EXPA.CA)	11.61	Dn.-Corr.	—	—	11.60	12.50	9.90	—	—
Holding Companies									
Citadel capital (CCAP.CA)	1.289	Up-Corr.	—	—	1.21	1.31	1.09	—	—
Hermes Holding (HRHO.CA)	12.02	Bullish	12.10√	12.70	11.70	12.10	11.25	—	—
Kuwaiti Holding (EKHO.CA)	1.146	Bullish	1.13√	1.19	1.06	1.15	0.96	—	—
MM group for industry & international trade (MTIE.CA)	7.97	Dn.-Corr.	—	—	7.70	8.20	6.50	—	—
Orascom financial holding (OFH.CA)	0.292	Dn.-Corr.	—	—	0.275	0.31	0.275	—	—
Pioneers holding (PIOH.CA)	5.66	Bullish	5.45√	6.10	5.45	6.10	4.80	—	—
Housing & Real Estate									
Egyptian For Tourism Resorts (EGTS.CA)	2.62	Bullish	2.68√	3.05	2.35	2.68	1.95	—	—
Elshams housing (ELSH.CA)	18.88	Bullish	18.30√	20.00	18.30	20.00	15.00	—	—
Emaar holding (EMFD.CA)	2.50	Up-Corr.	—	—	2.38	2.50	2.12	—	—
Heliopolis housing & development (HELL.CA)	5.77	Bullish	5.55	5.85	5.70	6.05	4.85	—	—
Medinet Nasr for housing & Deve. (MNHD.CA)	3.12	Up-Corr.	—	—	3.00	3.25	2.90	—	—
6th. October Deve. Inv. (OCDI.CA)	18.49	Bullish	18.60	19.55	17.90	19.55	15.70	—	—
Palm hills development Co. (PHDC.CA)	1.935	Dn.-Corr.	—	—	1.88	1.96	1.60	—	—
Talaat Mustafa group holding (TMGH.CA)	7.21	Dn.-Corr.	—	—	7.00	7.35	6.30	—	—
Mining & Gas									
Alexandria Mineral Oils Co. (AMOC.CA)	3.85	Dn.-Corr.	—	—	3.60	3.88	3.20	—	—
Sidi Kerir Petrochemicals (SKPC.CA)	10.87	Bearish	—	—	10.25	11.10	—	—	—
Textiles & Clothes									
Arab Co. for asset management & Deve. (ACAMD.CA)	0.625	Up-Corr.	—	—	0.60	0.645	0.60	—	—
Arab cotton ginning (ACGC.CA)	1.939	Up-Corr.	—	—	1.92	2.08	1.70	—	—
Oriental Weavers (ORWE.CA)	8.60	Dn.-Corr.	—	—	8.25	8.65	7.50	—	—
Other Sectors									
Egyptian Media Production City (MPRC.CA)	6.40	Dn.-Corr.	—	—	6.10	6.45	5.90	—	—
Egyptian Transport - Egytrans (ETRS.CA)	15.20	Up-Corr.	—	—	14.90	15.90	13.60	—	—
Orascom holding development (ORHD.CA)	5.09	Bearish	—	—	4.70	5.05	—	—	—
United Arab Shipping (UASG.CA)	1.379	Dn.-Corr.	—	—	1.32	1.47	1.15	—	—

Disclaimer

- This publication has been prepared by Blom Egypt Securities for information purposes only.
- It is not intended as an offer to buy or sell or a solicitation of an offer to buy or sell the securities mentioned.
- The information & opinions in this publication were prepared by Blom Egypt Securities research department accepts no liability or legal responsibility for losses & damages incurred arising from the use of this publication or its contents.

Blom Egypt Securities
Samir M. Azmi, CFTe, CETA
Senior Technical Analyst
samir.azmi@blomsecurities.com



Guidelines for using BLOM daily Technical Analysis Report

<u>Close:</u>	Is recorded as the last trade in the session.
<u>Trend:</u>	
Bullish :	The strategy is to buy the dips.
Bearish :	The strategy is to sell the rallies.
Flat :	The strategy is to trade the range between the triggers.
Up-Corr. :	A move against the major trend when it is down.
Dn.-Corr. :	A move against the major trend when it is up.
<u>Targets :</u>	Take some profit by reducing a portion of the position whenever a price target is been hit.
<u>Support :</u>	A level below market price (previous lows) where buyers showed strength, in a bull market buy near the support and don't sell on the resistance. A break below the Support is considered to be a bearish sign.
<u>Resistance :</u>	A level above market price (previous highs) where sellers showed strength, in a bear market sell near the resistance level and don't buy on the support. A break above the resistance is considered to be a bullish sign.
<u>Stop Loss :</u>	Must exit the current position whenever the closing price is (1% to 2%) below the stop loss and confirmed by volume.
<u>Triggers :</u>	The range between the lower trigger and the upper is used for trading, break of any of them, the move would continue in the same direction.
<u>Yellow rows:</u>	indication that the stock closed below/above support, stop-loss, or resistance but the break is not confirmed yet.

Disclaimer

- This publication has been prepared by Blom Egypt Securities for information purposes only.
- It is not intended as an offer to buy or sell or a solicitation of an offer to buy or sell the securities mentioned.
- The information & opinions in this publication were prepared by Blom Egypt Securities research department accepts no liability or legal responsibility for losses & damages incurred arising from the use of this publication or its contents.

Blom Egypt Securities
Samir M. Azmi, CFTe, CETA
Senior Technical Analyst
samir.azmi@blomsecurities.com