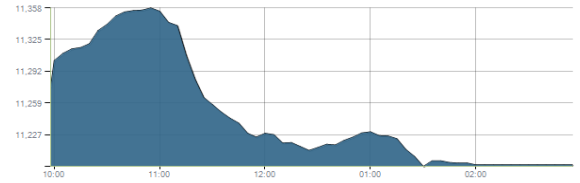




Indices intraday trends

EGX 30

مؤشر EGX 30
اليوم - 19/10/2021

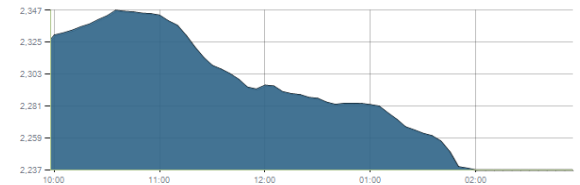


Key Levels

Support 1	11100	Resistance 1	11200-11320
Support 2	10950-10850	Resistance 2	11675

EGX 50 EWI

مؤشر EGX 50 EWI
اليوم - 19/10/2021

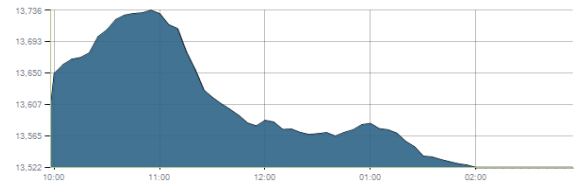


Key Levels

Close		2236.71	
Support 1	2240	Resistance 1	2310
Support 2	2200	Resistance 2	2355

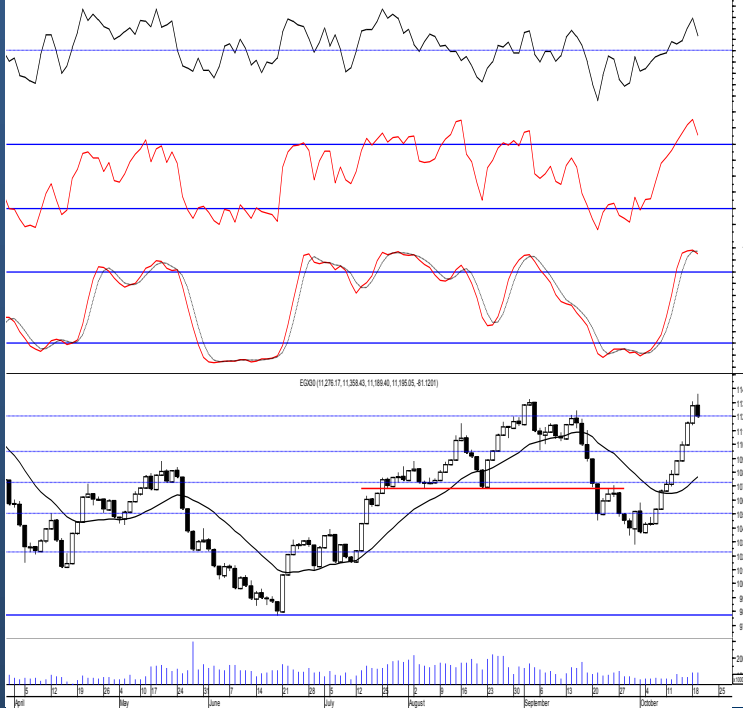
EGX 30 capped

مؤشر EGX 30 Capped
اليوم - 19/10/2021



Key Levels

Close		13522.10	
Support 1	13470	Resistance 1	13820
Support 2	13330	Resistance 2	14150



Market Commentary:

The EGX30 reached our resistance zone 11200-11320 and traded above before strong selling pressure takes place closing below near the low as most of the stocks fell sharply lower which will likely keep the index under stress so watching the mentioned supports is highly recommended.

Yet, we recommend to watch current levels very carefully where as we said clearing the mentioned zone will indicate that bullish party gained the near term technical advantage which will lead to further climbing to the major resistance level 11675. Trading should be very conservative on current levels keeping close stops placed and respected to reduce market risk

Close	11195.05	Trend	Up-Corr.
Pre. Close	11276.17	Target 1	—
Change	↓ 81.12 (0.72%)	Target 2	—
Day's range	11358.43 — 11189.40	Stop-loss	10350
52week's high	11675.69	52week's low	9769.18.18

Disclaimer

- This publication has been prepared by Blom Egypt Securities for information purposes only.
- It is not intended as an offer to buy or sell or a solicitation of an offer to buy or sell the securities mentioned.
- The information & opinions in this publication were prepared by Blom Egypt Securities research department accepts no liability or legal responsibility for losses & damages incurred arising from the use of this publication or its contents.

Blom Egypt Securities
Samir M. Azmi, CFTe, CETA
Senior Technical Analyst
samir.azmi@blomsecurities.com



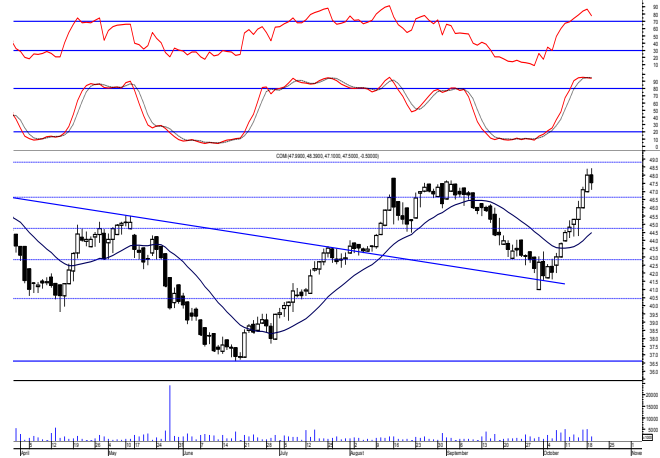
Commercial international bank (COMI.CA):

Prices failed to confirm clearing our resistance level 47.80 as selling pressure dominated keeping levels unchanged and so for our outlook.

Breaking the mentioned level as we said will set new targets while on the other hand watching the coming supports is highly recommended.

On the other hand failure to clear it will probably lead to a correction near the mentioned supports.

Support levels: 46.40, 44.70
Resistance levels: 47.80, 49.55

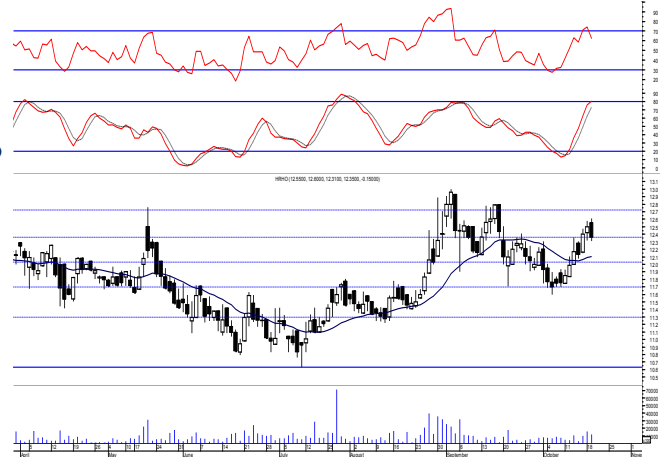


Hermes Holding (HRHO.CA):

Prices failed to continue the early rally attempt as selling pressure strongly took place closing in red near the low leaving everything in place. Bear in mind that clearing will lead to further climbing to 13.40.

Existing positions are advised to hold keeping stops placed and respected below 11.25 as any decline below will give back the hand to selling party.

Support levels: 12.10, 11.70
Resistance levels: (12.60-12.75), 13.40

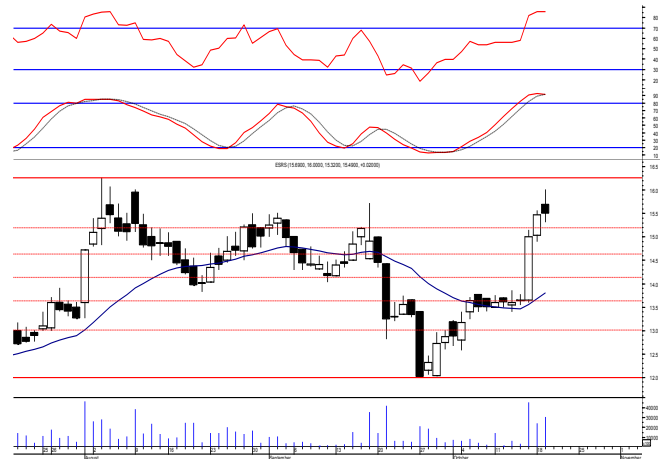


El-Ezz steel rebar's' (ESRS.CA):

Prices witnessed another upward move ahead of trading before selling pressure takes place closing back near the low with a slight positive change.

The breakout was accompanied by heavy trading volumes which as we said indicates consistency. Therefore, rally is expected to reach the coming resistance level 16.25 which have strong potential to be cleared and therefore setting bullish target levels at 17.55 & 18.90.

Support levels: 15.20, 14.50
Resistance levels: 16.25, 17.55



Disclaimer

- This publication has been prepared by Blom Egypt Securities for information purposes only.
- It is not intended as an offer to buy or sell or a solicitation of an offer to buy or sell the securities mentioned.
- The information & opinions in this publication were prepared by Blom Egypt Securities research department accepts no liability or legal responsibility for losses & damages incurred arising from the use of this publication or its contents.

Blom Egypt Securities
Samir M. Azmi, CFTe, CETA
Senior Technical Analyst
samir.azmi@blomsecurities.com



Most active Stocks

Daily Technical Analysis Report

20 Oct, 2021

Stock Name (Reuters' Code)	Close	Trend	T1	T2	Support	Resistance	SL	Triggers	
								Lower	Upper
Building Materials & Construction									
Arabian cement (ARCC.CA)	3.41	Up-Corr.	—	—	3.45	3.80	3.20	—	—
El Ezz Steel Rebar's (ESRS.CA)	15.49	Dn.-Corr.	—	—	15.20	16.25	12.00	—	—
GB auto (AUTO.CA)	4.35	Dn.-Corr.	—	—	4.20	4.47	3.75	—	—
Orascom construction (ORAS.CA)	72.26	Dn.-Corr.	—	—	71.00	74.50	68.50	—	—
South Valley Cement (SVCE.CA)	1.701	Bearish	—	—	1.70	1.95	—	—	—
Elsweddy Cables (SWDY.CA)	8.61	UP-Corr.	—	—	8.35	8.85	7.90	—	—
Upper Egypt general contracting (UEGC.CA)	0.693	Up-Corr.	—	—	0.685	0.725	0.672	—	—
Chemicals									
Abu-Qir fertilizers (ABUK.CA)	19.89	Bullish	20.55	21.30	19.55	21.30	18.30	—	—
Egyptian Financial & Indust. (EFIC.CA)	13.06	Up-Corr.	—	—	12.60	13.40	12.10	—	—
Egyptian chemical industries-Kima (EGCH.CA)	3.70	Up-Corr.	—	—	3.50	3.77	3.50	—	—
Communications									
Fawry for banking tech. & electronic payment (FWRY.CA)	16.49	Up-Corr.	—	—	15.90	16.85	14.90	—	—
Orascom investment holding (OIH.CA)	0.25	Dn.-Corr.	—	—	0.25	0.27	0.215	—	—
Telecom Egypt (ETEL.CA)	13.70	Dn.-Corr.	—	—	12.90	13.85	12.90	—	—
Financial Services									
Abu Dhabi International Bank (ADIB.CA)	15.06	Up-Corr.	—	—	14.50	16.30	12.60	—	—
Arabian for investments & development (AIH.CA)	0.409	Up-Corr.	—	—	0.403	0.425	0.403	—	—
Amer holding group (AMER.CA)	1.069	Bullish	1.14	1.24	1.045	1.14	0.96	—	—
Commercial International Bank (COMI.CA)	47.50	Up-Corr.	—	—	46.40	47.80	41.00	—	—
Export development bank of Egypt (EXPA.CA)	9.30	Up-Corr.	—	—	9.15	10.00	9.15	—	—
Holding Companies									
Citadel capital (CCAP.CA)	1.224	Up-Corr.	—	—	1.225	1.305	1.09	—	—
Hermes Holding (HRHO.CA)	12.35	Dn.-Corr.	—	—	12.10	12.75	11.25	—	—
Kuwaiti Holding (EKHO.CA)	1.356	Bullish	1.23	1.39	1.23	1.39	1.11	—	—
MM group for industry & international trade (MTIE.CA)	6.71	Up-Corr.	—	—	6.70	7.00	6.20	—	—
Orascom financial holding (OFH.CA)	0.239	Bearish	—	—	0.23	0.26	—	—	—
Housing & Real Estate									
Egyptian For Tourism Resorts (EGTS.CA)	1.662	Bearish	—	—	1.625	1.77	—	—	—
Elshams housing (ELSH.CA)	8.78	Bearish	—	—	8.25	9.50	—	—	—
Emaar holding (EMFD.CA)	2.38	Dn.-Corr.	—	—	2.28	2.38	2.28	—	—
Heliopolis housing & development (HELL.CA)	4.80	Up-Corr.	—	—	4.80	5.05	4.80	—	—
Medinet Nasr for housing & Deve. (MNHD.CA)	2.67	Bearish	—	—	2.53	2.73	—	—	—
6th. October Deve. Inv. (OCDI.CA)	18.58	Dn.-Corr.	—	—	17.90	18.60	16.90	—	—
Palm hills development Co. (PHDC.CA)	1.995	Dn.-Corr.	—	—	1.96	2.03	1.73	—	—
Talaat Mustafa group holding (TMGH.CA)	7.35	Dn.-Corr.	—	—	6.90	7.50	6.90	—	—
Mining & Gas									
Alexandria Mineral Oils Co. (AMOC.CA)	4.05	Bullish	4.40	4.80	4.00	4.40	3.55	—	—
Sidi Kerir Petrochemicals (SKPC.CA)	9.60	Up-Corr.	—	—	9.30	9.70	8.65	—	—
Textiles & Clothes									
Arab Co. for asset management & Deve. (ACAMD.CA)	0.494	Bearish	—	—	0.50	0.54	—	—	—
Arab cotton ginning (ACGC.CA)	1.693	Up-Corr.	—	—	1.70	1.78	1.60	—	—
Oriental Weavers (ORWE.CA)	8.40	Dn.-Corr.	—	—	8.05	8.55	7.50	—	—
Other Sectors									
Egyptian Media Production City (MPRC.CA)	5.29	Bearish	—	—	5.04	5.60	—	—	—
Egyptian Transport - Egytrans (ETRS.CA)	13.00	Up-Corr.	—	—	12.50	13.60	12.50	—	—
Orascom holding development (ORHD.CA)	4.94	Up-Corr.	—	—	4.80	5.05	4.64	—	—
United Arab Shipping (UASG.CA)	1.072	Up-Corr.	—	—	1.05	1.22	1.05	—	—

Disclaimer

- This publication has been prepared by Blom Egypt Securities for information purposes only.
- It is not intended as an offer to buy or sell or a solicitation of an offer to buy or sell the securities mentioned.
- The information & opinions in this publication were prepared by Blom Egypt Securities research department accepts no liability or legal responsibility for losses & damages incurred arising from the use of this publication or its contents.

Blom Egypt Securities
Samir M. Azmi, CFTe, CETA
Senior Technical Analyst
samir.azmi@blomsecurities.com



Guidelines for using BLOM daily Technical Analysis Report

<u>Close:</u>	Is recorded as the last trade in the session.
<u>Trend:</u>	
Bullish :	The strategy is to buy the dips.
Bearish :	The strategy is to sell the rallies.
Flat :	The strategy is to trade the range between the triggers.
Up-Corr. :	A move against the major trend when it is down.
Dn.-Corr. :	A move against the major trend when it is up.
<u>Targets :</u>	Take some profit by reducing a portion of the position whenever a price target is been hit.
<u>Support :</u>	A level below market price (previous lows) where buyers showed strength, in a bull market buy near the support and don't sell on the resistance. A break below the Support is considered to be a bearish sign.
<u>Resistance :</u>	A level above market price (previous highs) where sellers showed strength, in a bear market sell near the resistance level and don't buy on the support. A break above the resistance is considered to be a bullish sign.
<u>Stop Loss :</u>	Must exit the current position whenever the closing price is (1% to 2%) below the stop loss and confirmed by volume.
<u>Triggers :</u>	The range between the lower trigger and the upper is used for trading, break of any of them, the move would continue in the same direction.
<u>Yellow rows:</u>	indication that the stock closed below/above support, stop-loss, or resistance but the break is not confirmed yet.

Disclaimer

- This publication has been prepared by Blom Egypt Securities for information purposes only.
- It is not intended as an offer to buy or sell or a solicitation of an offer to buy or sell the securities mentioned.
- The information & opinions in this publication were prepared by Blom Egypt Securities research department accepts no liability or legal responsibility for losses & damages incurred arising from the use of this publication or its contents.

Blom Egypt Securities
Samir M. Azmi, CFTe, CETA
Senior Technical Analyst
samir.azmi@blomsecurities.com