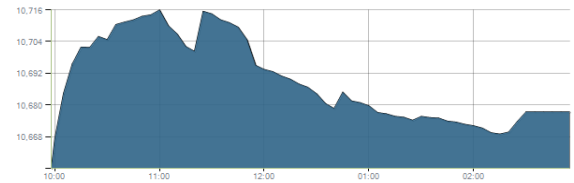




Indices intraday trends

EGX 30

مؤشر EGX 30
اليوم - 23/12/2020

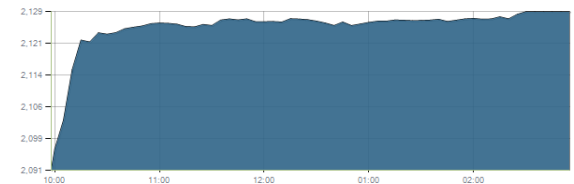


Key Levels

Support 1	10550	Resistance 1	10750
Support 2	10270	Resistance 2	10900-11100

EGX 50 EWI

مؤشر EGX 50 EWI
اليوم - 23/12/2020

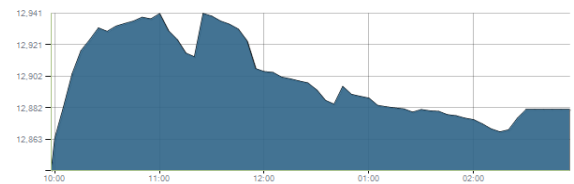


Key Levels

Close		2128.98	
Support 1	2130	Resistance 1	2200
Support 2	1965	Resistance 2	2300

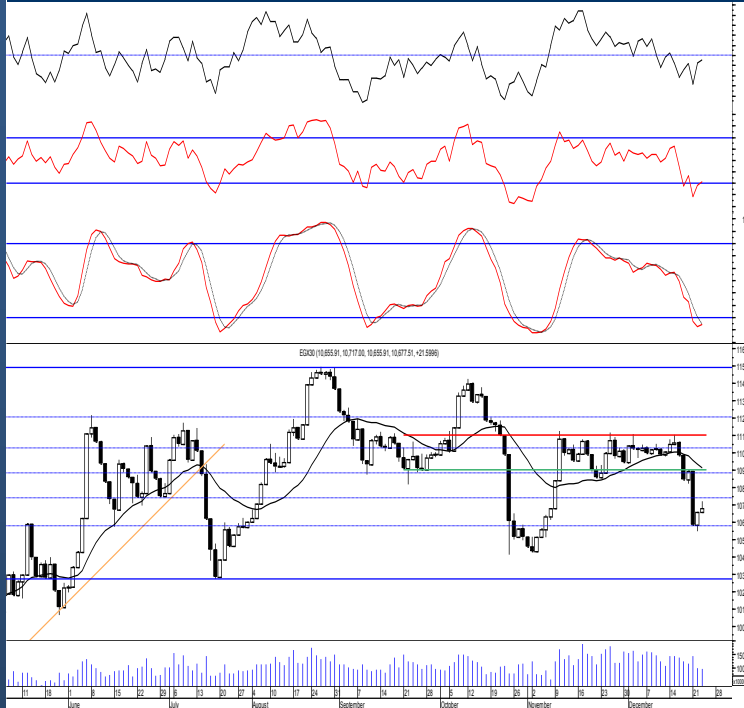
EGX 30 capped

مؤشر EGX 30 Capped
اليوم - 23/12/2020



Key Levels

Close		12881.04	
Support 1	12790	Resistance 1	13035
Support 2	12460	Resistance 2	13170



Market Commentary:

The EGX30 climbed higher as most of the stocks continued rebounded from their supports before selling pressure takes place pulling the index back closing nearer the low. Lack of trading volumes is still evident increasing the risk which in turn indicates that the current move is only a counter move to the recent decline therefore we recommend to watch current levels very carefully. On the other hand any broken stop should be respected and wait for a confirmed positive signal. We overall recommend to stay on cash till a confirmed buy signal is evident. Risk takers who decides holding their positons are advised to keep close stops placed and respected.

Close	10677.51	Trend	Up-Corr.
Pre. Close	10655.91	Target 1	---
Change	↑ 21.60 (0.20%)	Target 2	---
Day's range	10655.91 — 10717.00	Stop-loss	10425
52week's high	14831.20	52week's low	8113.82

Disclaimer

- This publication has been prepared by Blom Egypt Securities for information purposes only.
- It is not intended as an offer to buy or sell or a solicitation of an offer to buy or sell the securities mentioned.
- The information & opinions in this publication were prepared by Blom Egypt Securities research department accepts no liability or legal responsibility for losses & damages incurred arising from the use of this publication or its contents.

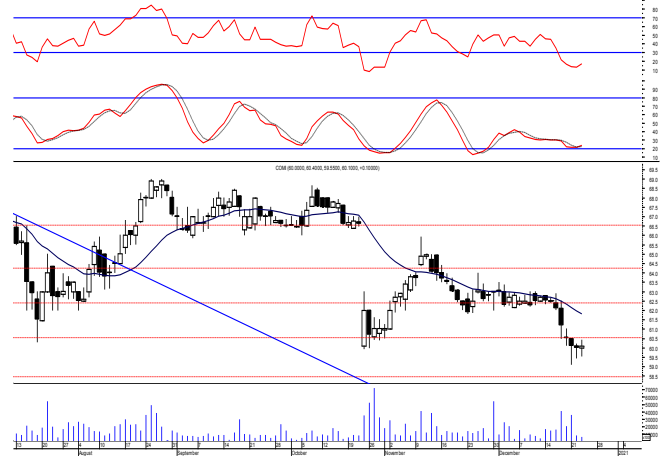
Blom Egypt Securities
Samir M. Azmi, CFTe, CETA
Senior Technical Analyst
samir.azmi@blomsecurities.com



Commercial international bank (COMI.CA):

Prices retested the prominent support level 60.00 but buyers again were still able to defend closing nearer the high slightly positive keeping levels unchanged and so for our outlook. We still recommend traded positions to stay on cash and wait for a confirmed buy signal to react safely on. While held positions are advised to activate their stops and stay on cash.

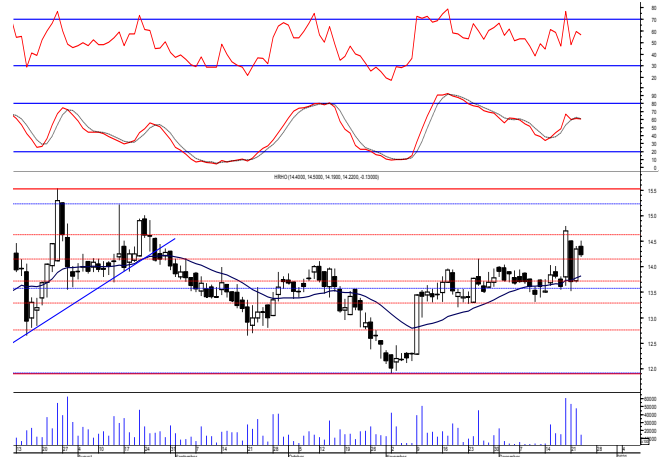
Support levels: 60.00, 58.50
Resistance levels: 63.00, 66.00



Hermes Holding (HRHO.CA):

Prices remained flat most of the session closing slightly negative leaving everything in place. Again, buyers confirms their strength by restoring the mentioned level so we may reopen buying positions targeting the mentioned resistance zone. Close stops should always be placed and respected to protect the downside.

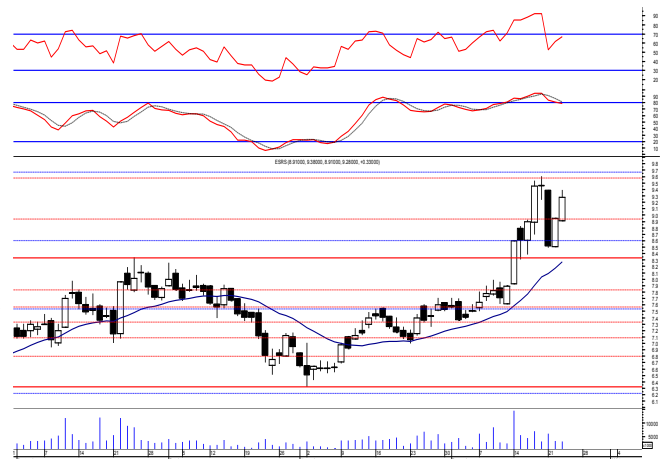
Support levels: 14.10, 13.50
Resistance levels: 15.25-15.55, 16.60-17.10



El-Ezz steel rebar's' (ESRS.CA):

Prices climbed higher breaking the resistance level 9.10 turning it into support but trading volumes decreased which do not support real buying strength so it's highly recommended to stay alerted. Notice that protective stop should be placed below 8.30 as failure to defend will indicate that the breakout was false and that sellers are still in control. On other side, any violated protective stops should be respected and activated staying on cash till a reentry signal is clearly given.

Support levels: 9.10, 8.30
Resistance levels: 9.80, 10.90



Disclaimer

- This publication has been prepared by Blom Egypt Securities for information purposes only.
- It is not intended as an offer to buy or sell or a solicitation of an offer to buy or sell the securities mentioned.
- The information & opinions in this publication were prepared by Blom Egypt Securities research department accepts no liability or legal responsibility for losses & damages incurred arising from the use of this publication or its contents.

Blom Egypt Securities
Samir M. Azmi, CFTe, CETA
Senior Technical Analyst
samir.azmi@blomsecurities.com



Most active Stocks

Daily Technical Analysis Report

24 Dec, 2020

Stock Name (Reuters' Code)	Close	Trend	T1	T2	Support	Resistance	SL	Triggers	
								Lower	Upper
Building Materials & Construction									
Arabian cement (ARCC.CA)	3.11	Up-Corr.	—	—	3.05	3.17	2.75	—	—
El Ezz Steel Rebar's (ESRS.CA)	9.28	Dn.-Corr.	—	—	9.10	9.80	7.55	—	—
Egyptian iron & steel; Co. (IRON.CA)	3.23	Dn.-Corr.	—	—	3.15	3.30	2.80	—	—
GB auto (AUTO.CA)	3.23	Dn.-Corr.	—	—	3.10	3.32	2.80	—	—
Orascom construction (ORAS.CA)	80.00	Flat	—	—	—	—	81.00	81.00	85.50
South Valley Cement (SVCE.CA)	1.633	Bearish	—	—	1.50	1.67	—	—	—
Elsweddy Cables (SWDY.CA)	8.87	Bullish	8.95√	9.30√	8.50	9.30	7.75	—	—
Upper Egypt general contracting (UEGC.CA)	0.758	Up-Corr.	—	—	0.74	0.80	0.74	—	—
Chemicals									
Abu-Qir fertilizers (ABUK.CA)	20.60	Bullish	21.60√	22.80	20.50	21.60	19.20	—	—
Egyptian Financial & Indust. (EFIC.CA)	11.51	Bearish	—	—	11.10	11.90	—	—	—
Egyptian chemical industries-Kima (EGCH.CA)	4.01	Up-Corr.	—	—	3.90	4.25	3.80	—	—
Communications									
Orascom investment holding (OIH.CA)	0.515	Up-Corr.	—	—	0.49	0.555	0.49	—	—
Telecom Egypt (EDEL.CA)	11.60	Up-Corr.	—	—	11.40	11.75	11.40	—	—
Financial Services									
Abu Dhabi International Bank (ADIB.CA)	11.60	Dn.-Corr.	—	—	11.20	12.00	11.20	—	—
Arabian for investments & development (AIH.CA)	0.622	Dn.-Corr.	—	—	0.59	0.645	0.59	—	—
Amer holding group (AMER.CA)	1.12	Dn.-Corr.	—	—	1.07	1.14	0.84	—	—
Commercial International Bank (COMI.CA)	60.10	Up-Corr.	—	—	60.00	63.00	60.00	—	—
Export development bank of Egypt (EXPA.CA)	13.88	Bearish	—	—	13.80	14.40	—	—	—
Holding Companies									
CI capital holding for financial investments (CICH.CA)	3.85	Up-Corr.	—	—	3.75	4.00	3.55	—	—
Citadel capital (CCAP.CA)	1.405	Up-Corr.	—	—	1.39	1.45	1.39	—	—
Hermes Holding (HRHO.CA)	14.22	Up-Corr.	—	—	14.10	15.50	13.20	—	—
Kuwaiti Holding (EKHO.CA)	1.00	Up-Corr.	—	—	0.97	1.04	0.97	—	—
Pioneers holding (PIOH.CA)	3.73	Up-Corr.	—	—	3.60	3.85	3.60	—	—
Housing & Real Estate									
Egyptian For Tourism Resorts (EGTS.CA)	1.422	Up-Corr.	—	—	1.30	1.42	1.30	—	—
Elshams housing (ELSH.CA)	4.68	Up-Corr.	—	—	4.60	4.80	4.15	—	—
Emaar holding (EMFD.CA)	2.35	Dn.-Corr.	—	—	2.30	2.40	2.13	—	—
Heliopolis housing & development (HELLI.CA)	5.80	Bearish	—	—	5.50	5.90	—	—	—
Medinet Nasr for housing & Deve. (MNHD.CA)	3.69	Up-Corr.	—	—	3.60	3.90	3.45	—	—
6th. October Deve. Inv. (OCDI.CA)	15.00	Bullish	15.75	16.90	14.80	15.75	13.90	—	—
Palm hills development Co. (PHDC.CA)	1.339	Up-Corr.	—	—	1.28	1.33	1.28	—	—
Talaat Mustafa group holding (TMGH.CA)	6.44	Up-Corr.	—	—	6.30	6.55	6.30	—	—
Mining & Gas									
Alexandria Mineral Oils Co. (AMOC.CA)	2.97	Dn.-Corr.	—	—	2.75	2.95	2.60	—	—
Sidi Kerir Petrochemicals (SKPC.CA)	8.61	Dn.-Corr.	—	—	8.15	8.60	8.15	—	—
Textiles & Clothes									
Arab Co. for asset management & Deve. (ACAMD.CA)	5.21	Bearish	—	—	4.90	5.25	—	—	—
Arab cotton ginning (ACGC.CA)	3.07	Up-Corr.	—	—	2.85	3.05	2.85	—	—
Oriental Weavers (ORWE.CA)	6.70	Bearish	—	—	6.50	7.00	—	—	—
Other Sectors									
Egyptian Media Production City (MPRC.CA)	5.86	Up-Corr.	—	—	5.65	6.20	5.40	—	—
Egyptian Transport - Egytrans (ETRS.CA)	10.05	Up-Corr.	—	—	9.70	10.10	9.10	—	—
Orascom holding development (ORHD.CA)	4.53	Dn.-Corr.	—	—	4.45	4.85	4.45	—	—
United Arab Shipping (UASG.CA)	1.09	Up-Corr.	—	—	0.90	1.10	0.90	—	—

Disclaimer

- This publication has been prepared by Blom Egypt Securities for information purposes only.
- It is not intended as an offer to buy or sell or a solicitation of an offer to buy or sell the securities mentioned.
- The information & opinions in this publication were prepared by Blom Egypt Securities research department accepts no liability or legal responsibility for losses & damages incurred arising from the use of this publication or its contents.

Blom Egypt Securities
Samir M. Azmi, CFTe, CETA
Senior Technical Analyst
samir.azmi@blomsecurities.com



Guidelines for using BLOM daily Technical Analysis Report

<u>Close:</u>	Is recorded as the last trade in the session.
<u>Trend:</u>	
Bullish :	The strategy is to buy the dips.
Bearish :	The strategy is to sell the rallies.
Flat :	The strategy is to trade the range between the triggers.
Up-Corr. :	A move against the major trend when it is down.
Dn.-Corr. :	A move against the major trend when it is up.
<u>Targets :</u>	Take some profit by reducing a portion of the position whenever a price target is been hit.
<u>Support :</u>	A level below market price (previous lows) where buyers showed strength, in a bull market buy near the support and don't sell on the resistance. A break below the Support is considered to be a bearish sign.
<u>Resistance :</u>	A level above market price (previous highs) where sellers showed strength, in a bear market sell near the resistance level and don't buy on the support. A break above the resistance is considered to be a bullish sign.
<u>Stop Loss :</u>	Must exit the current position whenever the closing price is (1% to 2%) below the stop loss and confirmed by volume.
<u>Triggers :</u>	The range between the lower trigger and the upper is used for trading, break of any of them, the move would continue in the same direction.
<u>Yellow rows:</u>	indication that the stock closed below/above support, stop-loss, or resistance but the break is not confirmed yet.

Disclaimer

- This publication has been prepared by Blom Egypt Securities for information purposes only.
- It is not intended as an offer to buy or sell or a solicitation of an offer to buy or sell the securities mentioned.
- The information & opinions in this publication were prepared by Blom Egypt Securities research department accepts no liability or legal responsibility for losses & damages incurred arising from the use of this publication or its contents.

Blom Egypt Securities
Samir M. Azmi, CFTe, CETA
Senior Technical Analyst
samir.azmi@blomsecurities.com