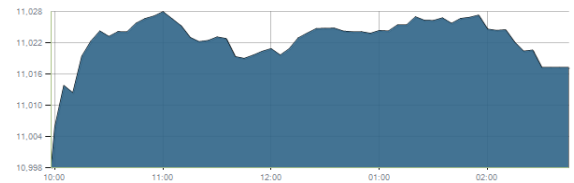




Indices intraday trends

EGX 30

مؤشر EGX 30  
اليوم - 12/11/2020

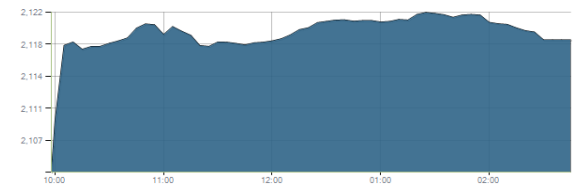


Key Levels

Support 1	10550	Resistance 1	10750
Support 2	10270	Resistance 2	10900-11100

EGX 50 EWI

مؤشر EGX 50 EWI  
اليوم - 12/11/2020

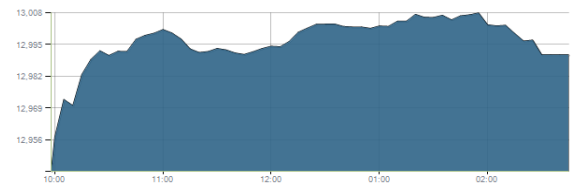


Key Levels

Close		2118.87	
Support 1	2055	Resistance 1	2130
Support 2	1907	Resistance 2	2200

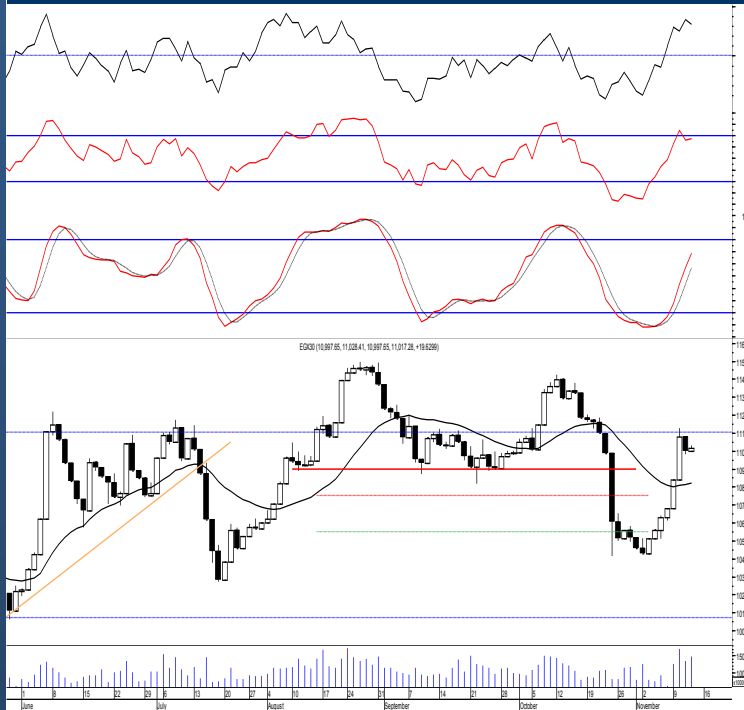
EGX 30 capped

مؤشر EGX 30 Capped  
اليوم - 12/11/2020



Key Levels

Close		12990.62	
Support 1	12790	Resistance 1	13035
Support 2	12460	Resistance 2	13455



Market Commentary:

The EGX30 traded quietly flat closing slightly positive within the important resistance zone 10900-11100 leaving everything in place.

Our outlook is the same, our view will turn positive only by managing to clear the mentioned resistance zone so we still recommend to stay on cash.

Risk takers who used the decline to buy on are advised to continue selling near the mentioned resistance levels and wait for a confirmed buy signal to react safely on.

Close	11017.28	Trend	Up-Corr.
Pre. Close	10997.65	Target 1	—
Change	↑ 19.63 ( 0.18% )	Target 2	—
Day's range	10997.65 — 11028.41	Stop-loss	10425
52week's high	14831.20	52week's low	8113.82

Disclaimer

- This publication has been prepared by Blom Egypt Securities for information purposes only.
- It is not intended as an offer to buy or sell or a solicitation of an offer to buy or sell the securities mentioned.
- The information & opinions in this publication were prepared by Blom Egypt Securities research department accepts no liability or legal responsibility for losses & damages incurred arising from the use of this publication or its contents.

**Blom Egypt Securities**  
Samir M. Azmi, CFTE, CETA  
Senior Technical Analyst  
samir.azmi@blomsecurities.com

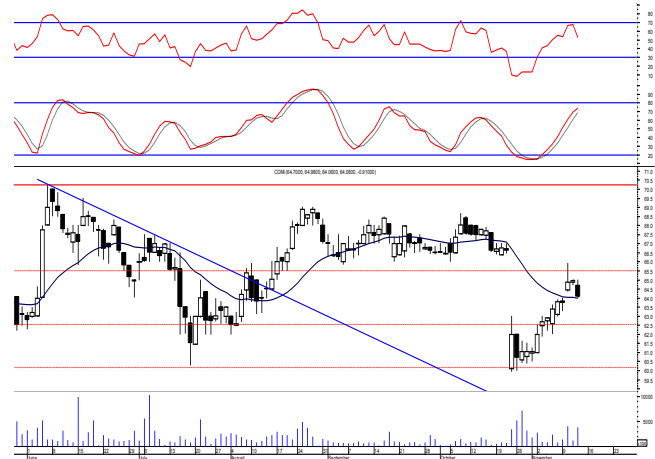


**Commercial international bank (COMI.CA):**

Prices remained flat as balanced trading dominated keeping levels unchanged and so for our outlook unchanged. Further climbing is now expected to extend to the coming resistance level 66.00, where as we said we recommend to continue selling on.

Traders are advised to move stops higher to 63.00 to reduce risk and maximize profits.

Support levels: 63.00, 60.00  
Resistance levels: 66.00, 67.50



**Hermes Holding (HRHO.CA):**

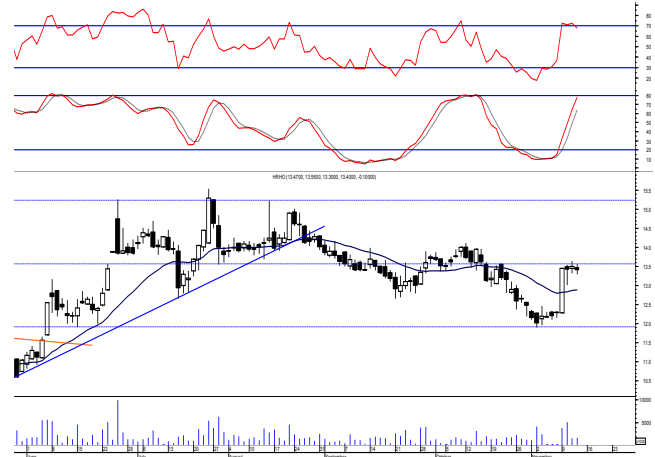
Prices for the third time retested the resistance level 13.50 failing to penetrate above so everything is in place.

We still recommend to stay on cash and wait for a confirmed buy signal to react safely on.

Buyers will confirm their strength by only clearing the resistance level 14.10.

Any held positions should watch the mentioned support as it represents an important defensive line.

Support levels: 12.65, 11.90  
Resistance levels: 13.50, 14.10

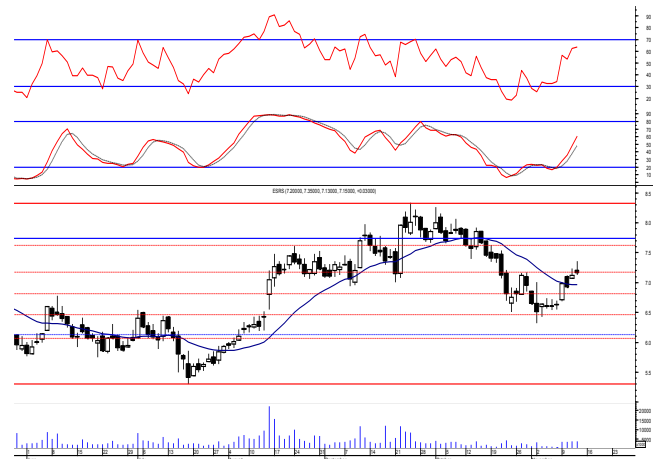


**El-Ezz steel rebar's' (ESRS.CA):**

Prices failed to continue the early rally closing near the low slightly above the resistance level 7.00 but confirmation is still needed.

As we said, breaking the mentioned resistance will give a chance for short term traders to safely react on using the next resistance level to close the trades on which is expected.

Support levels: 6.40, 6.00  
Resistance levels: 7.00, 7.55-7.75



**Disclaimer**

- This publication has been prepared by Blom Egypt Securities for information purposes only.
- It is not intended as an offer to buy or sell or a solicitation of an offer to buy or sell the securities mentioned.
- The information & opinions in this publication were prepared by Blom Egypt Securities research department accepts no liability or legal responsibility for losses & damages incurred arising from the use of this publication or its contents.

**Blom Egypt Securities**  
**Samir M. Azmi, CFTe, CETA**  
**Senior Technical Analyst**  
**samir.azmi@blomsecurities.com**



Most active Stocks

Daily Technical Analysis Report

15 Nov, 2020

Stock Name (Reuters' Code)	Close	Trend	T1	T2	Support	Resistance	SL	Triggers	
								Lower	Upper
<b>Building Materials &amp; Construction</b>									
Arabian cement (ARCC.CA)	3.21	Up-Corr.	—	—	3.10	3.35	2.75	—	—
El Ezz Steel Rebar's (ESRS.CA)	7.15	Up-Corr.	—	—	6.40	7.00	6.40	—	—
Egyptian iron & steel; Co. (IRON.CA)	3.26	Dn.-Corr.	—	—	3.20	3.50	2.80	—	—
GB auto (AUTO.CA)	3.10	Up-Corr.	—	—	2.95	3.10	2.40	—	—
Orascom construction (ORAS.CA)	74.00	Dn.-Corr.	—	—	73.00	77.50	67.50	—	—
South Valley Cement (SVCE.CA)	1.74	Up-Corr.	—	—	1.65	1.77	1.48	—	—
Elsweddy Cables (SWDY.CA)	8.30	Up-Corr.	—	—	8.10	8.50	7.00	—	—
Upper Egypt general contracting (UEGC.CA)	0.755	Bearish	—	—	0.66	0.75	—	—	—
<b>Chemicals</b>									
Abu-Qir fertilizers (ABUK.CA)	19.07	Dn.-Corr.	—	—	18.60	19.60	15.90	—	—
Egyptian Financial & Indust. (EFIC.CA)	10.19	Up-Corr.	—	—	9.80	10.60	9.80	—	—
Egyptian chemical industries-Kima (EGCH.CA)	4.24	Up-Corr.	—	—	4.20	4.40	3.80	—	—
<b>Communications</b>									
Orascom investment holding (OIH.CA)	0.509	Bearish	—	—	0.46	0.50	—	—	—
Telecom Egypt (ETEL.CA)	12.25	Up-Corr.	—	—	12.20	14.00	11.40	—	—
<b>Financial Services</b>									
Abu Dhabi International Bank (ADIB.CA)	12.00	Dn.-Corr.	—	—	11.20	12.10	10.60	—	—
Arabian for investments & development (AIH.CA)	0.451	Up-Corr.	—	—	0.445	0.49	0.363	—	—
Amer holding group (AMER.CA)	0.668	Dn.-Corr.	—	—	0.645	0.69	0.62	—	—
Commercial International Bank (COMI.CA)	64.06	Up-Corr.	—	—	63.00	66.00	60.00	—	—
Export development bank of Egypt (EXPA.CA)	15.40	Bullish	15.85	17.70	15.00	15.85	14.35	—	—
<b>Holding Companies</b>									
CI capital holding for financial investments (CICH.CA)	3.89	Up-Corr.	—	—	3.70	3.95	3.25	—	—
Citadel capital (CCAP.CA)	1.398	Bearish	—	—	1.296	1.43	—	—	—
Hermes Holding (HRHO.CA)	13.40	Up-Corr.	—	—	12.65	13.50	11.90	—	—
Kuwaiti Holding (EKHO.CA)	1.064	Dn.-Corr.	—	—	1.03	1.09	0.97	—	—
Pioneers holding (PIOH.CA)	4.10	Up-Corr.	—	—	3.85	4.10	3.70	—	—
<b>Housing &amp; Real Estate</b>									
Egyptian For Tourism Resorts (EGTS.CA)	1.41	Up-Corr.	—	—	1.30	1.45	1.25	—	—
Elshams housing (ELSH.CA)	4.99	Up-Corr.	—	—	4.60	5.05	4.15	—	—
Emaar holding (EMFD.CA)	2.31	Up-Corr.	—	—	2.28	2.40	2.13	—	—
Heliopolis housing & development (HELL.CA)	6.25	Dn.-Corr.	—	—	6.10	6.40	5.90	—	—
Medinet Nasr for housing & Deve. (MNHD.CA)	3.86	Up-Corr.	—	—	3.65	3.95	3.45	—	—
6th. October Deve. Inv. (OCDI.CA)	13.05	Up-Corr.	—	—	12.30	13.30	10.90	—	—
Palm hills development Co. (PHDC.CA)	1.334	Up-Corr.	—	—	1.27	1.40	1.18	—	—
Talaat Mustafa group holding (TMGH.CA)	6.37	Up-Corr.	—	—	6.30	6.70	5.80	—	—
<b>Mining &amp; Gas</b>									
Alexandria Mineral Oils Co. (AMOC.CA)	2.57	Up-Corr.	—	—	2.45	2.60	2.30	—	—
Sidi Kerir Petrochemicals (SKPC.CA)	8.15	Up-Corr.	—	—	8.00	8.30	6.80	—	—
<b>Textiles &amp; Clothes</b>									
Arab Co. for asset management & Deve. (ACAMD.CA)	5.63	Bullish	5.70√	6.00	5.40	6.00	4.50	—	—
Arab cotton ginning (ACGC.CA)	2.99	Up-Corr.	—	—	2.90	3.07	2.40	—	—
Oriental Weavers (ORWE.CA)	7.20	Bullish	7.00√	7.45	7.00	7.45	6.10	—	—
<b>Other Sectors</b>									
Egyptian Media Production City (MPRC.CA)	5.87	Up-Corr.	—	—	5.70	6.15	5.40	—	—
Egyptian Transport - Egytrans (ETRS.CA)	10.91	Up-Corr.	—	—	10.60	11.00	9.10	—	—
Orascom holding development (ORHD.CA)	4.12	Up-Corr.	—	—	4.25	4.50	3.75	—	—
United Arab Shipping (UASG.CA)	1.18	Up-Corr.	—	—	1.17	1.35	0.90	—	—

Disclaimer

- This publication has been prepared by Blom Egypt Securities for information purposes only.
- It is not intended as an offer to buy or sell or a solicitation of an offer to buy or sell the securities mentioned.
- The information & opinions in this publication were prepared by Blom Egypt Securities research department accepts no liability or legal responsibility for losses & damages incurred arising from the use of this publication or its contents.

**Blom Egypt Securities**  
Samir M. Azmi, CFTe, CETA  
Senior Technical Analyst  
samir.azmi@blomsecurities.com



**Guidelines for using BLOM daily Technical Analysis Report**

<b><u>Close:</u></b>	Is recorded as the last trade in the session.
<b><u>Trend:</u></b>	
<b>Bullish :</b>	The strategy is to buy the dips.
<b>Bearish :</b>	The strategy is to sell the rallies.
<b>Flat :</b>	The strategy is to trade the range between the triggers.
<b>Up-Corr. :</b>	A move against the major trend when it is down.
<b>Dn.-Corr. :</b>	A move against the major trend when it is up.
<b><u>Targets :</u></b>	Take some profit by reducing a portion of the position whenever a price target is been hit.
<b><u>Support :</u></b>	A level below market price (previous lows) where buyers showed strength, in a bull market buy near the support and don't sell on the resistance. A break below the Support is considered to be a bearish sign.
<b><u>Resistance :</u></b>	A level above market price (previous highs) where sellers showed strength, in a bear market sell near the resistance level and don't buy on the support. A break above the resistance is considered to be a bullish sign.
<b><u>Stop Loss :</u></b>	Must exit the current position whenever the closing price is (1% to 2%) below the stop loss and confirmed by volume.
<b><u>Triggers :</u></b>	The range between the lower trigger and the upper is used for trading, break of any of them, the move would continue in the same direction.
<b><u>Yellow rows:</u></b>	indication that the stock closed below/above support, stop-loss, or resistance but the break is not confirmed yet.

**Disclaimer**

- This publication has been prepared by Blom Egypt Securities for information purposes only.
- It is not intended as an offer to buy or sell or a solicitation of an offer to buy or sell the securities mentioned.
- The information & opinions in this publication were prepared by Blom Egypt Securities research department accepts no liability or legal responsibility for losses & damages incurred arising from the use of this publication or its contents.

**Blom Egypt Securities**  
**Samir M. Azmi, CFTe, CETA**  
**Senior Technical Analyst**  
**samir.azmi@blomsecurities.com**