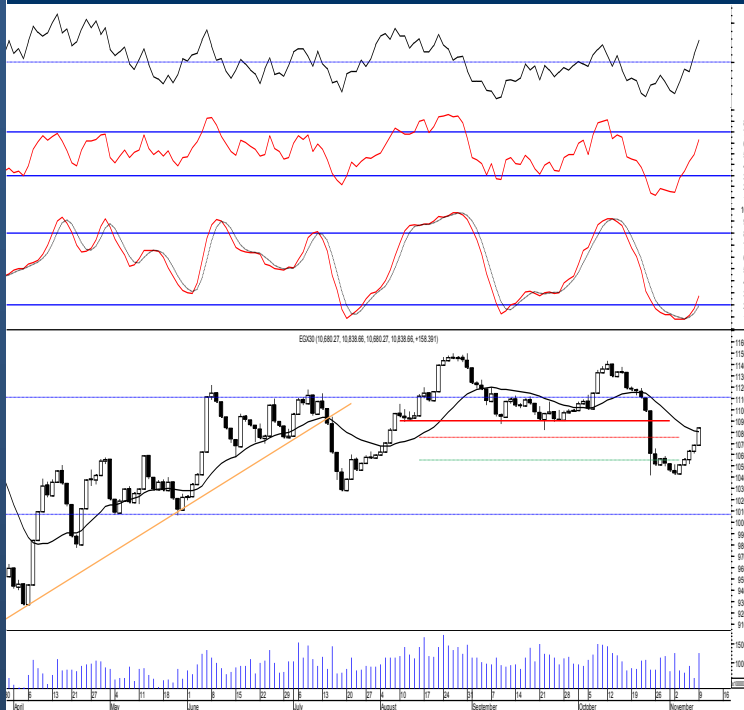




Egypt | EGX 30

Daily Technical Analysis Report

10 Nov, 2020



Market Commentary:

The EGX30 soared sharply as most of the stocks rose sharply pushing the index higher clearing the resistance level 10750 turning it into support closing on the high fueled by increasing trading volumes indicating further climbing. Our coming resistance is the important zone 10900-11100.

Our outlook is the same, our view will turn positive only by managing to clear the mentioned resistance zone so we still recommend to stay on cash.

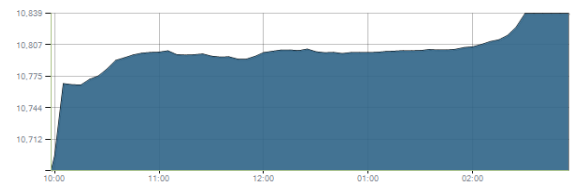
Risk takers who used the decline to buy on are advised to continue selling near the mentioned resistance levels.

Close	10838.66	Trend	Bearish
Pre. Close	10680.27	Target 1	---
Change	↑ 158.39 (1.48%)	Target 2	---
Day's range	10680.27 — 10838.66	Stop-loss	---
52week's high	14831.20	52week's low	8113.82

Indices intraday trends

EGX 30

مؤشر EGX 30
اليوم - 09/11/2020

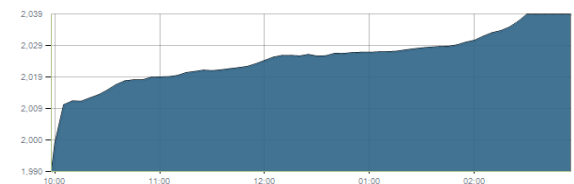


Key Levels

Support 1	10550	Resistance 1	10750
Support 2	10270	Resistance 2	10900-11100

EGX 50 EWI

مؤشر EGX 50 EWI
اليوم - 09/11/2020

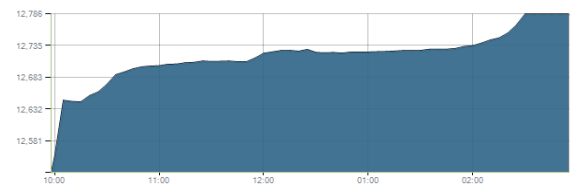


Key Levels

Close		2038.89	
Support 1	1907	Resistance 1	2055
Support 2	1870	Resistance 2	2130

EGX 30 capped

مؤشر EGX 30 Capped
اليوم - 09/11/2020



Key Levels

Close		12785.91	
Support 1	12460	Resistance 1	12790
Support 2	12220	Resistance 2	13035

Disclaimer

- This publication has been prepared by Blom Egypt Securities for information purposes only.
- It is not intended as an offer to buy or sell or a solicitation of an offer to buy or sell the securities mentioned.
- The information & opinions in this publication were prepared by Blom Egypt Securities research department accepts no liability or legal responsibility for losses & damages incurred arising from the use of this publication or its contents.

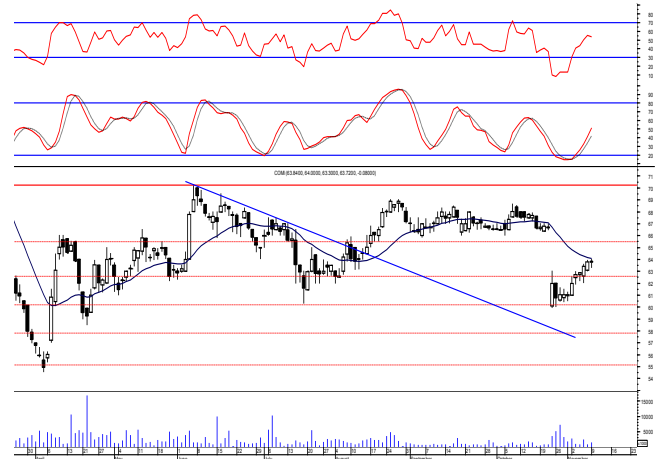
Blom Egypt Securities
Samir M. Azmi, CFTe, CETA
Senior Technical Analyst
samir.azmi@blomsecurities.com



Commercial international bank (COMI.CA):

Prices closed slightly negative after quiet trading performance keeping our outlook unchanged. Further climbing is now expected to extend to the coming resistance level 66.00, where as we said we recommend to continue selling on. Traders are advised to move stops higher to 63.00 to reduce risk and maximize profits.

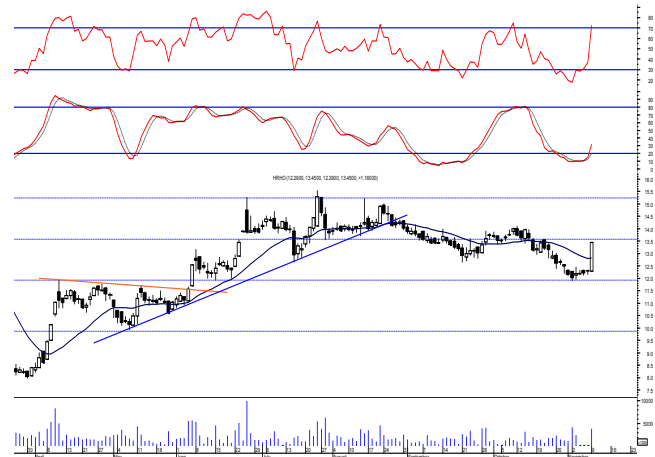
Support levels: 63.00, 60.00
Resistance levels: 66.00, 67.50



Hermes Holding (HRHO.CA):

Prices rallied sharply boosted by heavy trading volume breaking the important resistance level 12.65 turning it into support. Our levels now are 12.65 & 13.50. We still recommend to stay on cash and wait for a confirmed buy signal to react safely on. Buyers will confirm their strength by only clearing the resistance level 14.10. Any held positions should watch the mentioned support as it represents an important defensive line.

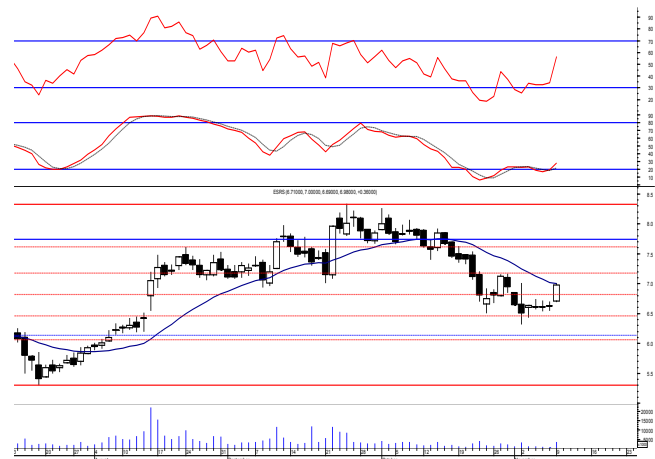
Support levels: 12.65, 11.90
Resistance levels: 13.50, 14.10



El-Ezz steel rebar's' (ESRS.CA):

Prices witnessed an upward move approaching the resistance level 7.00 closing slightly below. Trading volumes significantly increased suggesting breaking the mentioned resistance which will give a chance for short term traders to safely react on using the next resistance level to close the trades on which is expected.

Support levels: 6.40, 6.00
Resistance levels: 7.00, 7.55-7.75



Disclaimer

- This publication has been prepared by Blom Egypt Securities for information purposes only.
- It is not intended as an offer to buy or sell or a solicitation of an offer to buy or sell the securities mentioned.
- The information & opinions in this publication were prepared by Blom Egypt Securities research department accepts no liability or legal responsibility for losses & damages incurred arising from the use of this publication or its contents.

Blom Egypt Securities
Samir M. Azmi, CFTe, CETA
Senior Technical Analyst
samir.azmi@blomsecurities.com



Most active Stocks

Daily Technical Analysis Report

10 Nov, 2020

Stock Name (Reuters' Code)	Close	Trend	T1	T2	Support	Resistance	SL	Triggers	
								Lower	Upper
Building Materials & Construction									
Arabian cement (ARCC.CA)	3.07	Flat	—	—	—	—	2.75	2.90	3.15
El Ezz Steel Rebar's (ESRS.CA)	6.98	Up-Corr.	—	—	6.40	7.00	6.40	—	—
Egyptian iron & steel; Co. (IRON.CA)	3.40	Dn.-Corr.	—	—	3.20	3.50	2.80	—	—
GB auto (AUTO.CA)	2.89	Up-Corr.	—	—	2.75	2.95	2.40	—	—
Orascom construction (ORAS.CA)	70.00	Flat	—	—	—	—	67.50	69.00	73.00
South Valley Cement (SVCE.CA)	1.673	Up-Corr.	—	—	1.65	1.77	1.48	—	—
Elsweddy Cables (SWDY.CA)	8.09	Up-Corr.	—	—	7.90	8.20	7.00	—	—
Upper Egypt general contracting (UEGC.CA)	0.744	Bearish	—	—	0.66	0.75	—	—	—
Chemicals									
Abu-Qir fertilizers (ABUK.CA)	18.75	Dn.-Corr.	—	—	18.60	19.60	15.90	—	—
Egyptian Financial & Indust. (EFIC.CA)	9.91	Up-Corr.	—	—	9.80	10.60	9.80	—	—
Egyptian chemical industries-Kima (EGCH.CA)	4.12	Bearish	—	—	3.85	4.20	—	—	—
Communications									
Orascom investment holding (OIH.CA)	0.499	Bearish	—	—	0.46	0.50	—	—	—
Telecom Egypt (ETEL.CA)	12.60	Up-Corr.	—	—	12.20	14.00	11.40	—	—
Financial Services									
Abu Dhabi International Bank (ADIB.CA)	11.55	Dn.-Corr.	—	—	11.20	12.10	10.60	—	—
Arabian for investments & development (AIH.CA)	0.442	Up-Corr.	—	—	0.41	0.445	0.363	—	—
Amer holding group (AMER.CA)	0.664	Dn.-Corr.	—	—	0.645	0.69	0.62	—	—
Commercial International Bank (COMI.CA)	63.72	Up-Corr.	—	—	63.00	66.00	60.00	—	—
Export development bank of Egypt (EXPA.CA)	14.95	Dn.-Corr.	—	—	13.80	15.00	12.65	—	—
Holding Companies									
CI capital holding for financial investments (CICH.CA)	3.85	Up-Corr.	—	—	3.70	3.95	3.25	—	—
Citadel capital (CCAP.CA)	1.392	Bearish	—	—	1.296	1.43	—	—	—
Hermes Holding (HRHO.CA)	13.45	Up-Corr.	—	—	12.65	13.50	11.90	—	—
Kuwaiti Holding (EKHO.CA)	1.06	Dn.-Corr.	—	—	1.03	1.09	0.97	—	—
Pioneers holding (PIOH.CA)	3.96	Up-Corr.	—	—	3.85	4.10	3.70	—	—
Housing & Real Estate									
Egyptian For Tourism Resorts (EGTS.CA)	1.371	Up-Corr.	—	—	1.30	1.45	1.25	—	—
Elshams housing (ELSH.CA)	4.75	Up-Corr.	—	—	4.60	5.05	4.15	—	—
Emaar holding (EMFD.CA)	2.31	Up-Corr.	—	—	2.28	2.40	2.13	—	—
Heliopolis housing & development (HELL.CA)	6.35	Dn.-Corr.	—	—	6.40	6.70	5.90	—	—
Medinet Nasr for housing & Deve. (MNHD.CA)	3.87	Up-Corr.	—	—	3.65	3.95	3.45	—	—
6th. October Deve. Inv. (OCDI.CA)	13.00	Up-Corr.	—	—	12.30	13.30	10.90	—	—
Palm hills development Co. (PHDC.CA)	1.30	Up-Corr.	—	—	1.27	1.40	1.18	—	—
Talaat Mustafa group holding (TMGH.CA)	6.40	Up-Corr.	—	—	6.30	6.70	5.80	—	—
Mining & Gas									
Alexandria Mineral Oils Co. (AMOC.CA)	2.46	Up-Corr.	—	—	2.45	2.60	2.30	—	—
Sidi Kerir Petrochemicals (SKPC.CA)	7.57	Up-Corr.	—	—	7.20	7.60	6.80	—	—
Textiles & Clothes									
Arab Co. for asset management & Deve. (ACAMD.CA)	5.53	Bullish	5.70√	6.00	5.40	6.00	4.50	—	—
Arab cotton ginning (ACGC.CA)	2.74	Bearish	—	—	2.55	2.75	—	—	—
Oriental Weavers (ORWE.CA)	6.78	Bullish	6.65√	7.00	6.65	7.00	5.75	—	—
Other Sectors									
Egyptian Media Production City (MPRC.CA)	5.61	Up-Corr.	—	—	5.40	5.70	5.40	—	—
Egyptian Transport - Egytrans (ETRS.CA)	10.40	Up-Corr.	—	—	9.95	10.60	9.10	—	—
Orascom holding development (ORHD.CA)	3.75	Up-Corr.	—	—	3.65	3.85	3.40	—	—
United Arab Shipping (UASG.CA)	1.03	Bearish	—	—	0.92	1.08	—	—	—

Disclaimer

- This publication has been prepared by Blom Egypt Securities for information purposes only.
- It is not intended as an offer to buy or sell or a solicitation of an offer to buy or sell the securities mentioned.
- The information & opinions in this publication were prepared by Blom Egypt Securities research department accepts no liability or legal responsibility for losses & damages incurred arising from the use of this publication or its contents.

Blom Egypt Securities
Samir M. Azmi, CFTe, CETA
Senior Technical Analyst
samir.azmi@blomsecurities.com



Guidelines for using BLOM daily Technical Analysis Report

<u>Close:</u>	Is recorded as the last trade in the session.
<u>Trend:</u>	
Bullish :	The strategy is to buy the dips.
Bearish :	The strategy is to sell the rallies.
Flat :	The strategy is to trade the range between the triggers.
Up-Corr. :	A move against the major trend when it is down.
Dn.-Corr. :	A move against the major trend when it is up.
<u>Targets :</u>	Take some profit by reducing a portion of the position whenever a price target is been hit.
<u>Support :</u>	A level below market price (previous lows) where buyers showed strength, in a bull market buy near the support and don't sell on the resistance. A break below the Support is considered to be a bearish sign.
<u>Resistance :</u>	A level above market price (previous highs) where sellers showed strength, in a bear market sell near the resistance level and don't buy on the support. A break above the resistance is considered to be a bullish sign.
<u>Stop Loss :</u>	Must exit the current position whenever the closing price is (1% to 2%) below the stop loss and confirmed by volume.
<u>Triggers :</u>	The range between the lower trigger and the upper is used for trading, break of any of them, the move would continue in the same direction.
<u>Yellow rows:</u>	indication that the stock closed below/above support, stop-loss, or resistance but the break is not confirmed yet.

Disclaimer

- This publication has been prepared by Blom Egypt Securities for information purposes only.
- It is not intended as an offer to buy or sell or a solicitation of an offer to buy or sell the securities mentioned.
- The information & opinions in this publication were prepared by Blom Egypt Securities research department accepts no liability or legal responsibility for losses & damages incurred arising from the use of this publication or its contents.

Blom Egypt Securities
Samir M. Azmi, CFTe, CETA
Senior Technical Analyst
samir.azmi@blomsecurities.com