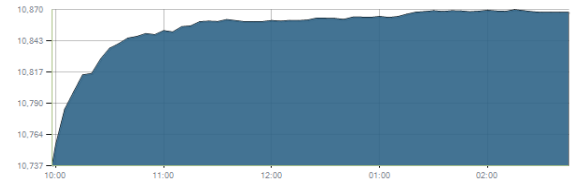


Indices intraday trends

EGX 30

مؤشر EGX 30  
اليوم - 30/12/2020

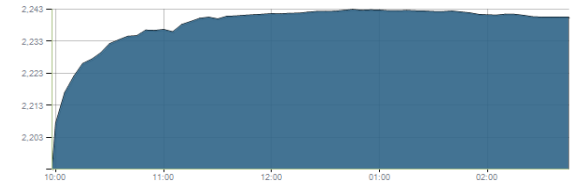


Key Levels

Support 1	10550	Resistance 1	10750
Support 2	10270	Resistance 2	10900-11100

EGX 50 EWI

مؤشر EGX 50 EWI  
اليوم - 30/12/2020

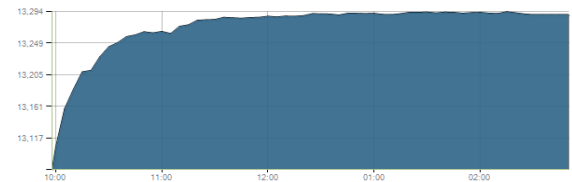


Key Levels

Close		2240.28	
Support 1	2200	Resistance 1	2300
Support 2	2130	Resistance 2	2430

EGX 30 capped

مؤشر EGX 30 Capped  
اليوم - 30/12/2020



Key Levels

Close		13289.58	
Support 1	13035	Resistance 1	13170
Support 2	12790	Resistance 2	13460

Market Commentary:

The EGX30 soared higher breaking the resistance level 10750 turning it into support closing the index again near the high suggesting further climbing. Increasing trading volumes still suggests further climbing which will likely reach the major resistance zone 10900-11100. Short term trades may conservatively be opened above the mentioned level. On the other hand any broken stop should be respected and wait for a confirmed positive signal. We overall recommend to stay on cash till a confirmed buy signal is evident. Risk takers who decides holding their positons are advised to keep close stops placed and respected.

Close	10867.76	Trend	Up-Corr.
Pre. Close	10736.88	Target 1	—
Change	↑ 130.88 ( 1.22% )	Target 2	—
Day's range	10736.88 — 10870.06	Stop-loss	10425
52week's high	14831.20	52week's low	8113.82

Disclaimer

- This publication has been prepared by Blom Egypt Securities for information purposes only.
- It is not intended as an offer to buy or sell or a solicitation of an offer to buy or sell the securities mentioned.
- The information & opinions in this publication were prepared by Blom Egypt Securities research department accepts no liability or legal responsibility for losses & damages incurred arising from the use of this publication or its contents.

**Blom Egypt Securities**  
Samir M. Azmi, CFTe, CETA  
Senior Technical Analyst  
samir.azmi@blomsecurities.com



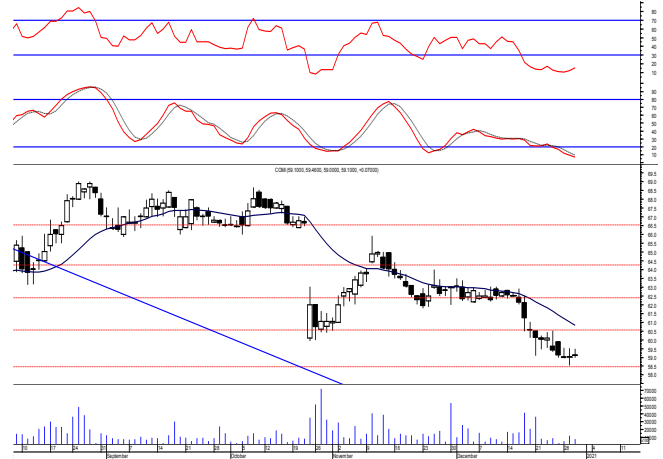
**Commercial international bank (COMI.CA):**

Prices closed slightly positive after quiet trading performance leaving everything in place. Watching the mentioned support is highly recommended.

We still recommend traded positions to stay on cash and wait for a confirmed buy signal to react safely on.

While held positions are advised to activate their stops and stay on cash.

Support levels: 58.50, 56.20  
Resistance levels: 60.00, 63.00

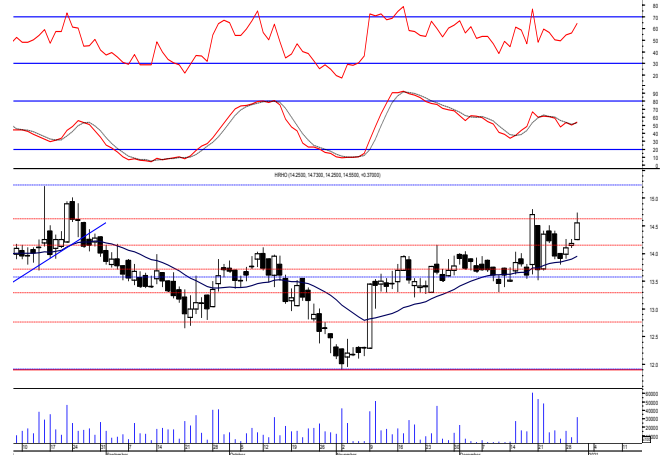


**Hermes Holding (HRHO.CA):**

Prices closed again above the resistance 14.10 confirming turning it into support which as we said proves buyers strength so we may reopen buying positions targeting the mentioned resistance zone.

Close stops should always be placed and respected to protect the downside.

Support levels: 14.10, 13.50  
Resistance levels: 15.25-15.55, 16.60-17.10

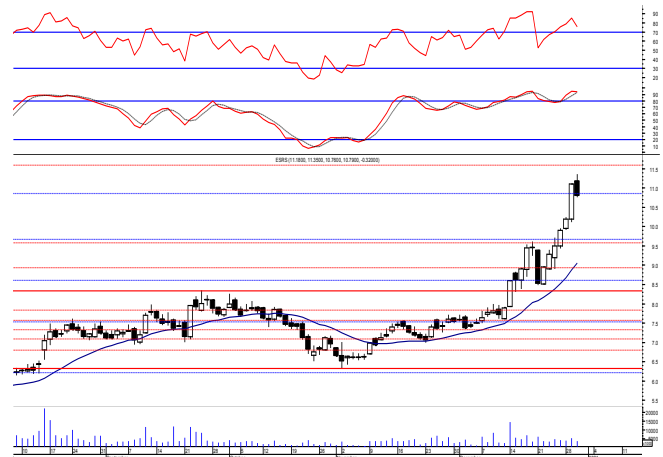


**El-Ezz steel rebar's' (ESRS.CA):**

Prices extended higher ahead of trading before selling pressure aggressively takes place closing on the low failing to confirm breaking the resistance level 10.90. As we said, buying strength will only be proven by breaking the mentioned level where we may reopen new positions safely above. Notice that targets then will be 11.60 & 12.45

Trailing stop should always be used to protect profits.

Support levels: 9.80, 9.10  
Resistance levels: 10.90, 11.60



**Disclaimer**

- This publication has been prepared by Blom Egypt Securities for information purposes only.
- It is not intended as an offer to buy or sell or a solicitation of an offer to buy or sell the securities mentioned.
- The information & opinions in this publication were prepared by Blom Egypt Securities research department accepts no liability or legal responsibility for losses & damages incurred arising from the use of this publication or its contents.

**Blom Egypt Securities**  
**Samir M. Azmi, CFTe, CETA**  
**Senior Technical Analyst**  
**samir.azmi@blomsecurities.com**



Most active Stocks

Daily Technical Analysis Report

31 Dec, 2020

Stock Name (Reuters' Code)	Close	Trend	T1	T2	Support	Resistance	SL	Triggers	
								Lower	Upper
<b>Building Materials &amp; Construction</b>									
Arabian cement (ARCC.CA)	3.20	Up-Corr.	—	—	3.05	3.17	2.75	—	—
El Ezz Steel Rebar's (ESRS.CA)	10.79	Bullish	10.90√	11.60	9.80	10.90	7.55	—	—
Egyptian iron & steel; Co. (IRON.CA)	3.27	Dn.-Corr.	—	—	3.15	3.35	2.80	—	—
GB auto (AUTO.CA)	3.30	Bullish	3.60	3.80	3.30	3.60	2.95	—	—
Orascom construction (ORAS.CA)	81.90	Flat	—	—	—	—	78.00	81.00	86.00
South Valley Cement (SVCE.CA)	1.677	Bearish	—	—	1.50	1.67	—	—	—
Elsweddy Cables (SWDY.CA)	9.86	Bullish	9.60√	9.90√	9.25	10.20	8.50	—	—
Upper Egypt general contracting (UEGC.CA)	0.82	Up-Corr.	—	—	0.815	0.855	0.74	—	—
<b>Chemicals</b>									
Abu-Qir fertilizers (ABUK.CA)	20.50	Dn.-Corr.	—	—	19.20	20.50	19.20	—	—
Egyptian Financial & Indust. (EFIC.CA)	11.98	Up-Corr.	—	—	11.85	12.80	11.10	—	—
Egyptian chemical industries-Kima (EGCH.CA)	4.09	Up-Corr.	—	—	3.90	4.25	3.80	—	—
<b>Communications</b>									
Orascom investment holding (OIH.CA)	0.559	Up-Corr.	—	—	0.49	0.555	0.49	—	—
Telecom Egypt (ETEL.CA)	11.86	Up-Corr.	—	—	11.40	12.00	11.40	—	—
<b>Financial Services</b>									
Abu Dhabi International Bank (ADIB.CA)	11.90	Dn.-Corr.	—	—	11.20	12.00	11.20	—	—
Arabian for investments & development (AIH.CA)	0.639	Dn.-Corr.	—	—	0.59	0.645	0.59	—	—
Amer holding group (AMER.CA)	1.115	Dn.-Corr.	—	—	1.07	1.14	0.84	—	—
Commercial International Bank (COMI.CA)	59.10	Bearish	—	—	58.50	60.00	—	—	—
Export development bank of Egypt (EXPA.CA)	14.65	Up-Corr.	—	—	13.80	14.60	13.80	—	—
<b>Holding Companies</b>									
CI capital holding for financial investments (CICH.CA)	4.01	Up-Corr.	—	—	3.75	4.00	3.55	—	—
Citadel capital (CCAP.CA)	1.441	Up-Corr.	—	—	1.39	1.45	1.39	—	—
Hermes Holding (HRHO.CA)	14.55	Up-Corr.	—	—	14.10	15.55	13.20	—	—
Kuwaiti Holding (EKHO.CA)	1.02	Up-Corr.	—	—	0.97	1.04	0.97	—	—
Pioneers holding (PIOH.CA)	3.94	Up-Corr.	—	—	3.85	4.15	3.60	—	—
<b>Housing &amp; Real Estate</b>									
Egyptian For Tourism Resorts (EGTS.CA)	1.416	Up-Corr.	—	—	1.30	1.42	1.30	—	—
Elshams housing (ELSH.CA)	4.80	Up-Corr.	—	—	4.70	4.90	4.15	—	—
Emaar holding (EMFD.CA)	2.36	Dn.-Corr.	—	—	2.30	2.40	2.13	—	—
Heliopolis housing & development (HELL.CA)	6.01	Up-Corr.	—	—	5.90	6.20	5.50	—	—
Medinet Nasr for housing & Deve. (MNHD.CA)	3.78	Up-Corr.	—	—	3.60	3.90	3.45	—	—
6th. October Deve. Inv. (OCDI.CA)	14.80	Bullish	15.75	16.90	14.80	15.75	13.90	—	—
Palm hills development Co. (PHDC.CA)	1.348	Up-Corr.	—	—	1.33	1.405	1.28	—	—
Talaat Mustafa group holding (TMGH.CA)	6.60	Up-Corr.	—	—	6.50	6.70	6.30	—	—
<b>Mining &amp; Gas</b>									
Alexandria Mineral Oils Co. (AMOC.CA)	3.12	Dn.-Corr.	—	—	3.13	3.35	2.75	—	—
Sidi Kerir Petrochemicals (SKPC.CA)	9.37	Bullish	9.85	10.60	9.25	9.85	8.15	—	—
<b>Textiles &amp; Clothes</b>									
Arab Co. for asset management & Deve. (ACAMD.CA)	5.41	Up-Corr.	—	—	5.25	5.57	4.65	—	—
Arab cotton ginning (ACGC.CA)	3.26	Up-Corr.	—	—	3.20	3.45	2.85	—	—
Oriental Weavers (ORWE.CA)	6.89	Bearish	—	—	6.50	7.00	—	—	—
<b>Other Sectors</b>									
Egyptian Media Production City (MPRC.CA)	6.47	Up-Corr.	—	—	6.10	6.65	5.40	—	—
Egyptian Transport - Egytrans (ETRS.CA)	10.40	Up-Corr.	—	—	10.10	11.00	9.10	—	—
Orascom holding development (ORHD.CA)	4.87	Dn.-Corr.	—	—	4.45	4.85	4.45	—	—
United Arab Shipping (UASG.CA)	1.112	Up-Corr.	—	—	1.08	1.17	0.90	—	—

Disclaimer

- This publication has been prepared by Blom Egypt Securities for information purposes only.
- It is not intended as an offer to buy or sell or a solicitation of an offer to buy or sell the securities mentioned.
- The information & opinions in this publication were prepared by Blom Egypt Securities research department accepts no liability or legal responsibility for losses & damages incurred arising from the use of this publication or its contents.

**Blom Egypt Securities**  
Samir M. Azmi, CFTe, CETA  
Senior Technical Analyst  
samir.azmi@blomsecurities.com



**Guidelines for using BLOM daily Technical Analysis Report**

<b><u>Close:</u></b>	Is recorded as the last trade in the session.
<b><u>Trend:</u></b>	
<b>Bullish :</b>	The strategy is to buy the dips.
<b>Bearish :</b>	The strategy is to sell the rallies.
<b>Flat :</b>	The strategy is to trade the range between the triggers.
<b>Up-Corr. :</b>	A move against the major trend when it is down.
<b>Dn.-Corr. :</b>	A move against the major trend when it is up.
<b><u>Targets :</u></b>	Take some profit by reducing a portion of the position whenever a price target is been hit.
<b><u>Support :</u></b>	A level below market price (previous lows) where buyers showed strength, in a bull market buy near the support and don't sell on the resistance. A break below the Support is considered to be a bearish sign.
<b><u>Resistance :</u></b>	A level above market price (previous highs) where sellers showed strength, in a bear market sell near the resistance level and don't buy on the support. A break above the resistance is considered to be a bullish sign.
<b><u>Stop Loss :</u></b>	Must exit the current position whenever the closing price is (1% to 2%) below the stop loss and confirmed by volume.
<b><u>Triggers :</u></b>	The range between the lower trigger and the upper is used for trading, break of any of them, the move would continue in the same direction.
<b><u>Yellow rows:</u></b>	indication that the stock closed below/above support, stop-loss, or resistance but the break is not confirmed yet.

**Disclaimer**

- This publication has been prepared by Blom Egypt Securities for information purposes only.
- It is not intended as an offer to buy or sell or a solicitation of an offer to buy or sell the securities mentioned.
- The information & opinions in this publication were prepared by Blom Egypt Securities research department accepts no liability or legal responsibility for losses & damages incurred arising from the use of this publication or its contents.

**Blom Egypt Securities**  
**Samir M. Azmi, CFTe, CETA**  
**Senior Technical Analyst**  
**samir.azmi@blomsecurities.com**