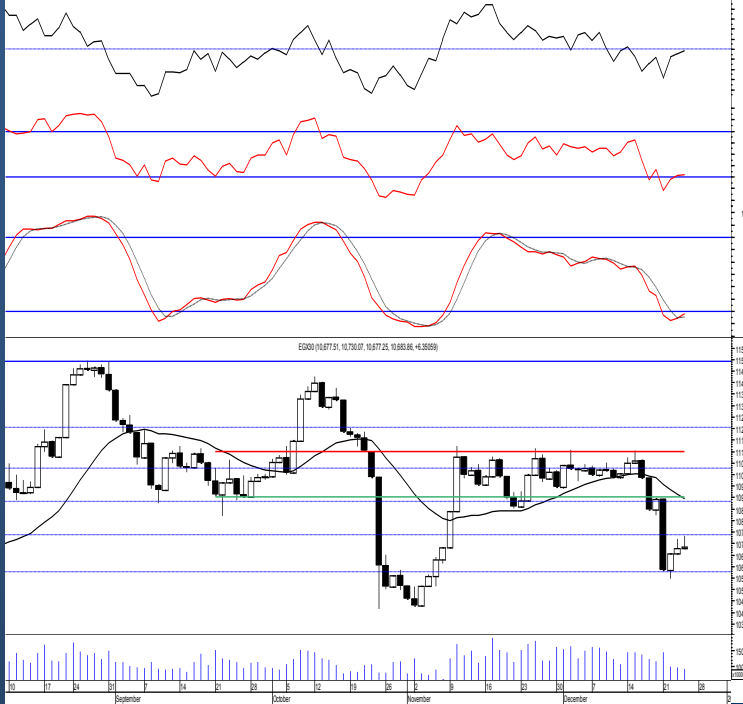




Egypt | EGX 30

Daily Technical Analysis Report

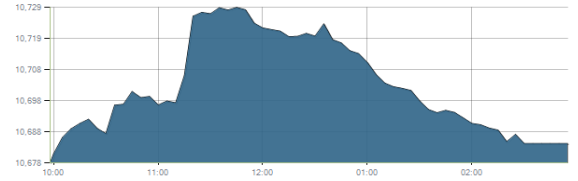
27 Dec, 2020



Indices intraday trends

EGX 30

مؤشر EGX 30
اليوم - 24/12/2020

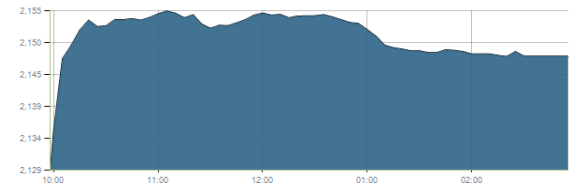


Key Levels

Support 1	10550	Resistance 1	10750
Support 2	10270	Resistance 2	10900-11100

EGX 50 EWI

مؤشر EGX 50 EWI
اليوم - 24/12/2020

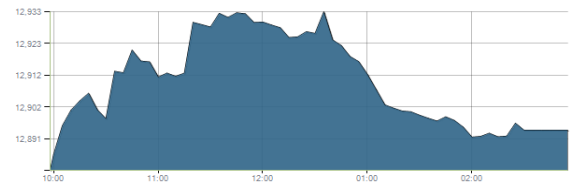


Key Levels

Close		2147.66	
Support 1	2130	Resistance 1	2200
Support 2	1965	Resistance 2	2300

EGX 30 capped

مؤشر EGX 30 Capped
اليوم - 24/12/2020



Key Levels

Close		12894.25	
Support 1	12790	Resistance 1	13035
Support 2	12460	Resistance 2	13170

Market Commentary:

The EGX30 climbed higher approaching the resistance level 10750 before selling pressure takes place pulling the index back closing nearer the low. Yet the market still suffers from lack of volumes which as we said increases the risk which in turn indicates that the current move is only a counter move to the recent decline therefore we recommend to watch current levels very carefully. On the other hand any broken stop should be respected and wait for a confirmed positive signal. We overall recommend to stay on cash till a confirmed buy signal is evident. Risk takers who decides holding their positons are advised to keep close stops placed and respected.

Close	10683.86	Trend	Up-Corr.
Pre. Close	10677.51	Target 1	---
Change	↑ 6.35 (0.06%)	Target 2	---
Day's range	10677.25 — 10730.07	Stop-loss	10425
52week's high	14831.20	52week's low	8113.82

Disclaimer

- This publication has been prepared by Blom Egypt Securities for information purposes only.
- It is not intended as an offer to buy or sell or a solicitation of an offer to buy or sell the securities mentioned.
- The information & opinions in this publication were prepared by Blom Egypt Securities research department accepts no liability or legal responsibility for losses & damages incurred arising from the use of this publication or its contents.

Blom Egypt Securities
Samir M. Azmi, CFTe, CETA
Senior Technical Analyst
samir.azmi@blomsecurities.com



Commercial international bank (COMI.CA):

Prices closed slightly below the support level 60.00 but still needs confirmation as trading volumes decreased significantly indicating lesser selling appetite.

We still recommend traded positions to stay on cash and wait for a confirmed buy signal to react safely on.

While held positions are advised to activate their stops and stay on cash.

Support levels: 60.00, 58.50
Resistance levels: 63.00, 66.00



Hermes Holding (HRHO.CA):

Prices closed back below 14.10 as selling pressure dominated. Notice that confirming below will be have a negative impact so stay alerted.

Buyers strength will be proven by sustaining the mentioned level so we may reopen buying positions targeting the mentioned resistance zone.

Close stops should always be placed and respected to protect the downside.

Support levels: 14.10, 13.50
Resistance levels: 15.25-15.55, 16.60-17.10

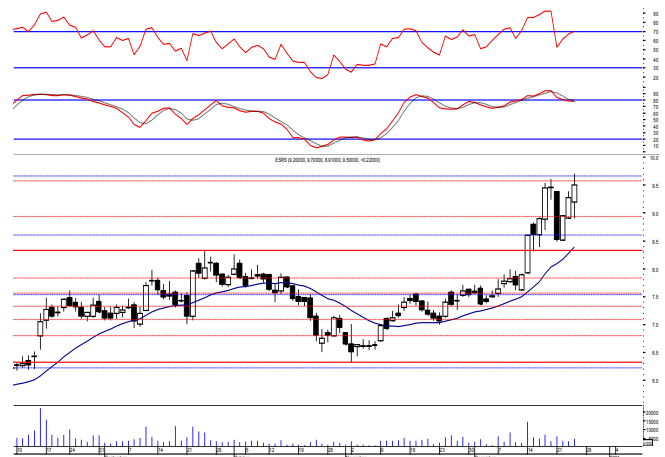


El-Ezz steel rebar's' (ESRS.CA):

Prices climbed higher reaching near the resistance level 9.80 where selling pressure was evident keeping the close below. Held positions are advised to trade partially near the mentioned resistance level bearing in mind that managing to break it will be followed by strong rally to the next target and strong resistance level 10.90.

On other side, any violated protective stops should be respected and activated staying on cash till a reentry signal is clearly given.

Support levels: 9.10, 8.30
Resistance levels: 9.80, 10.90



Disclaimer

- This publication has been prepared by Blom Egypt Securities for information purposes only.
- It is not intended as an offer to buy or sell or a solicitation of an offer to buy or sell the securities mentioned.
- The information & opinions in this publication were prepared by Blom Egypt Securities research department accepts no liability or legal responsibility for losses & damages incurred arising from the use of this publication or its contents.

Blom Egypt Securities
Samir M. Azmi, CFTe, CETA
Senior Technical Analyst
samir.azmi@blomsecurities.com



Most active Stocks

Daily Technical Analysis Report

27 Dec, 2020

Stock Name (Reuters' Code)	Close	Trend	T1	T2	Support	Resistance	SL	Triggers	
								Lower	Upper
Building Materials & Construction									
Arabian cement (ARCC.CA)	3.11	Up-Corr.	—	—	3.05	3.17	2.75	—	—
El Ezz Steel Rebar's (ESRS.CA)	9.50	Dn.-Corr.	—	—	9.10	9.80	7.55	—	—
Egyptian iron & steel; Co. (IRON.CA)	3.20	Dn.-Corr.	—	—	3.15	3.30	2.80	—	—
GB auto (AUTO.CA)	3.19	Dn.-Corr.	—	—	3.10	3.32	2.80	—	—
Orascom construction (ORAS.CA)	78.51	Bearish	—	—	76.50	81.00	—	—	—
South Valley Cement (SVCE.CA)	1.631	Bearish	—	—	1.50	1.67	—	—	—
Elswedey Cables (SWDY.CA)	8.94	Dn.-Corr.	—	—	8.80	9.40	8.50	—	—
Upper Egypt general contracting (UEGC.CA)	0.763	Up-Corr.	—	—	0.74	0.80	0.74	—	—
Chemicals									
Abu-Qir fertilizers (ABUK.CA)	20.64	Bullish	21.60 ^v	22.80	20.50	21.60	19.20	—	—
Egyptian Financial & Indust. (EFIC.CA)	11.60	Bearish	—	—	11.10	11.90	—	—	—
Egyptian chemical industries-Kima (EGCH.CA)	3.94	Up-Corr.	—	—	3.90	4.25	3.80	—	—
Communications									
Orascom investment holding (OIH.CA)	0.54	Up-Corr.	—	—	0.49	0.555	0.49	—	—
Telecom Egypt (ETEL.CA)	11.60	Up-Corr.	—	—	11.40	11.75	11.40	—	—
Financial Services									
Abu Dhabi International Bank (ADIB.CA)	11.62	Dn.-Corr.	—	—	11.20	12.00	11.20	—	—
Arabian for investments & development (AIH.CA)	0.61	Dn.-Corr.	—	—	0.59	0.645	0.59	—	—
Amer holding group (AMER.CA)	1.11	Dn.-Corr.	—	—	1.07	1.14	0.84	—	—
Commercial International Bank (COMI.CA)	59.38	Up-Corr.	—	—	60.00	63.00	60.00	—	—
Export development bank of Egypt (EXPA.CA)	14.20	Bearish	—	—	13.80	14.40	—	—	—
Holding Companies									
CI capital holding for financial investments (CICH.CA)	3.86	Up-Corr.	—	—	3.75	4.00	3.55	—	—
Citadel capital (CCAP.CA)	1.409	Up-Corr.	—	—	1.39	1.45	1.39	—	—
Hermes Holding (HRHO.CA)	13.94	Up-Corr.	—	—	14.10	15.50	13.20	—	—
Kuwaiti Holding (EKHO.CA)	1.014	Up-Corr.	—	—	0.97	1.04	0.97	—	—
Pioneers holding (PIOH.CA)	3.86	Up-Corr.	—	—	3.60	3.85	3.60	—	—
Housing & Real Estate									
Egyptian For Tourism Resorts (EGTS.CA)	1.30	Up-Corr.	—	—	1.30	1.42	1.30	—	—
Elshams housing (ELSH.CA)	4.70	Up-Corr.	—	—	4.60	4.80	4.15	—	—
Emaar holding (EMFD.CA)	2.34	Dn.-Corr.	—	—	2.30	2.40	2.13	—	—
Heliopolis housing & development (HELLI.CA)	5.76	Bearish	—	—	5.50	5.90	—	—	—
Medinet Nasr for housing & Deve. (MNHD.CA)	3.70	Up-Corr.	—	—	3.60	3.90	3.45	—	—
6th. October Deve. Inv. (OCDI.CA)	15.20	Bullish	15.75	16.90	14.80	15.75	13.90	—	—
Palm hills development Co. (PHDC.CA)	1.323	Up-Corr.	—	—	1.28	1.33	1.28	—	—
Talaat Mustafa group holding (TMGH.CA)	6.36	Up-Corr.	—	—	6.30	6.55	6.30	—	—
Mining & Gas									
Alexandria Mineral Oils Co. (AMOC.CA)	2.91	Dn.-Corr.	—	—	2.75	2.95	2.60	—	—
Sidi Kerir Petrochemicals (SKPC.CA)	8.55	Dn.-Corr.	—	—	8.15	8.60	8.15	—	—
Textiles & Clothes									
Arab Co. for asset management & Deve. (ACAMD.CA)	5.14	Bearish	—	—	4.90	5.25	—	—	—
Arab cotton ginning (ACGC.CA)	3.12	Up-Corr.	—	—	3.05	3.25	2.85	—	—
Oriental Weavers (ORWE.CA)	6.80	Bearish	—	—	6.50	7.00	—	—	—
Other Sectors									
Egyptian Media Production City (MPRC.CA)	5.95	Up-Corr.	—	—	5.65	6.20	5.40	—	—
Egyptian Transport - Egytrans (ETRS.CA)	N/A	Up-Corr.	—	—	9.70	10.10	9.10	—	—
Orascom holding development (ORHD.CA)	4.50	Dn.-Corr.	—	—	4.45	4.85	4.45	—	—
United Arab Shipping (UASG.CA)	1.085	Up-Corr.	—	—	0.90	1.10	0.90	—	—

Disclaimer

- This publication has been prepared by Blom Egypt Securities for information purposes only.
- It is not intended as an offer to buy or sell or a solicitation of an offer to buy or sell the securities mentioned.
- The information & opinions in this publication were prepared by Blom Egypt Securities research department accepts no liability or legal responsibility for losses & damages incurred arising from the use of this publication or its contents.

Blom Egypt Securities
Samir M. Azmi, CFTe, CETA
Senior Technical Analyst
samir.azmi@blomsecurities.com



Guidelines for using BLOM daily Technical Analysis Report

<u>Close:</u>	Is recorded as the last trade in the session.
<u>Trend:</u>	
Bullish :	The strategy is to buy the dips.
Bearish :	The strategy is to sell the rallies.
Flat :	The strategy is to trade the range between the triggers.
Up-Corr. :	A move against the major trend when it is down.
Dn.-Corr. :	A move against the major trend when it is up.
<u>Targets :</u>	Take some profit by reducing a portion of the position whenever a price target is been hit.
<u>Support :</u>	A level below market price (previous lows) where buyers showed strength, in a bull market buy near the support and don't sell on the resistance. A break below the Support is considered to be a bearish sign.
<u>Resistance :</u>	A level above market price (previous highs) where sellers showed strength, in a bear market sell near the resistance level and don't buy on the support. A break above the resistance is considered to be a bullish sign.
<u>Stop Loss :</u>	Must exit the current position whenever the closing price is (1% to 2%) below the stop loss and confirmed by volume.
<u>Triggers :</u>	The range between the lower trigger and the upper is used for trading, break of any of them, the move would continue in the same direction.
<u>Yellow rows:</u>	indication that the stock closed below/above support, stop-loss, or resistance but the break is not confirmed yet.

Disclaimer

- This publication has been prepared by Blom Egypt Securities for information purposes only.
- It is not intended as an offer to buy or sell or a solicitation of an offer to buy or sell the securities mentioned.
- The information & opinions in this publication were prepared by Blom Egypt Securities research department accepts no liability or legal responsibility for losses & damages incurred arising from the use of this publication or its contents.

Blom Egypt Securities
Samir M. Azmi, CFTe, CETA
Senior Technical Analyst
samir.azmi@blomsecurities.com