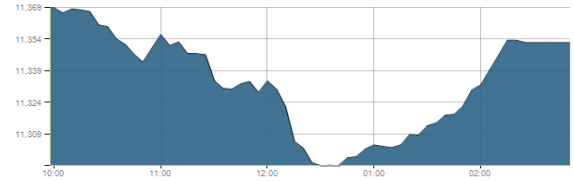




Indices intraday trends

EGX 30

مؤشر EGX 30
اليوم - 24/11/2021

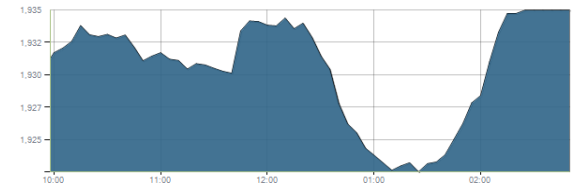


Key Levels

Support 1	11320-11200	Resistance 1	11675
Support 2	11100	Resistance 2	12250

EGX 50 EWI

مؤشر EGX 50 EWI
اليوم - 24/11/2021

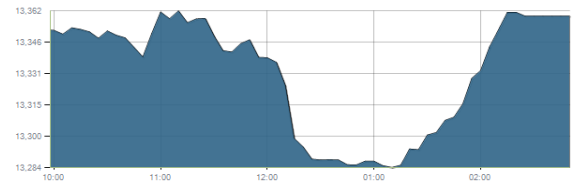


Key Levels

Close		1934.85	
Support 1	1890	Resistance 1	1970
Support 2	1800	Resistance 2	2060

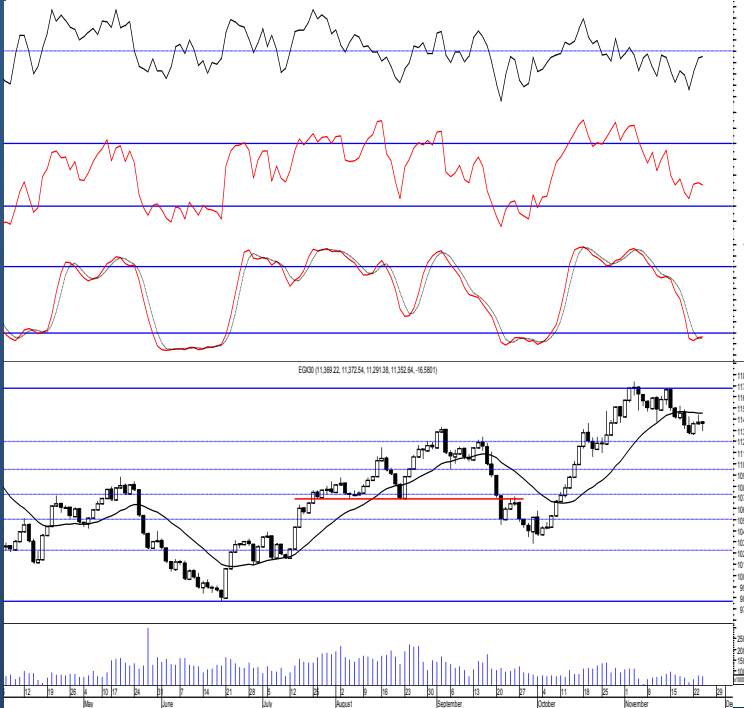
EGX 30 capped

مؤشر EGX 30 Capped
اليوم - 24/11/2021



Key Levels

Close		13359.22	
Support 1	13330	Resistance 1	13470
Support 2	12850	Resistance 2	13780



Market Commentary:

The EGX30 remained narrowly flat closing slightly negative above our mentioned support zone leaving levels unchanged and so for our outlook. Volumes remained weak in any upward moves keeping the market risk elevated. Trading should be very selective and conservative keeping close stops placed and respected to reduce market risk. Notice that the mentioned support zone should be respected in any decline as any violation to it will indicate that bears are in control further decline will follow.

Close	11352.64	Trend	Dn.-Corr.
Pre. Close	11369.22	Target 1	---
Change	↓ 16.58 (0.15%)	Target 2	---
Day's range	11372.54 — 11291.38	Stop-loss	10680
52week's high	11675.69	52week's low	9769.18.18

Disclaimer

- This publication has been prepared by Blom Egypt Securities for information purposes only.
- It is not intended as an offer to buy or sell or a solicitation of an offer to buy or sell the securities mentioned.
- The information & opinions in this publication were prepared by Blom Egypt Securities research department accepts no liability or legal responsibility for losses & damages incurred arising from the use of this publication or its contents.

Blom Egypt Securities
Samir M. Azmi, CFTe, CETA
Senior Technical Analyst
samir.azmi@blomsecurities.com

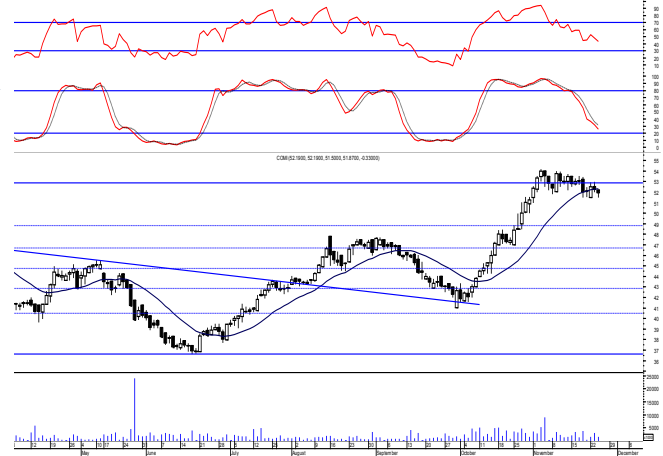


Commercial international bank (COMI.CA):

Prices successfully retested the support level 51.60 for the 4th time closing slightly negative but near the session's high keeping everything in place.

Levels are still the same and so for our outlook, short term trend now is considered flat within 52.80 & 51.60 where we may conservatively trade.

Support levels: 51.60, 50.00
Resistance levels: 52.80, 57.70



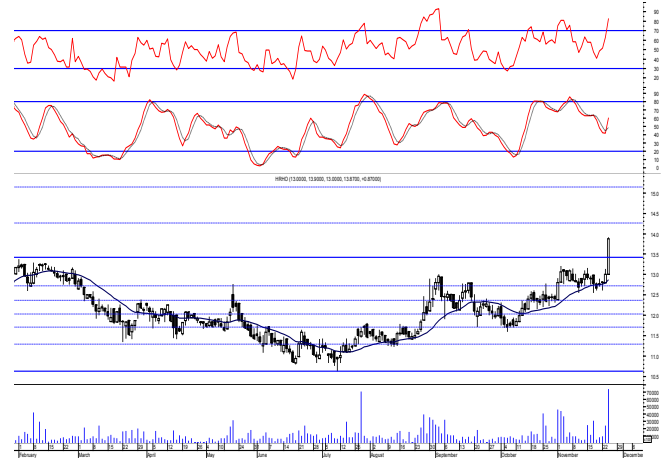
Hermes Holding (HRHO.CA):

Prices rallied sharply managing to clear the resistance level 13.40 closing near the high fueled by increasing trading volumes turning it into support.

Bullish trend now is confirmed targeting 14.25 & 15.20. Notice that 14.45 acts as very strong resistance level which should be respected.

New trades could be opened using the mentioned targets to trade gradually on taking into consideration the mentioned resistance level.

Support levels: 13.40, (12-75-12.60)
Resistance levels: 14.45, 16.35



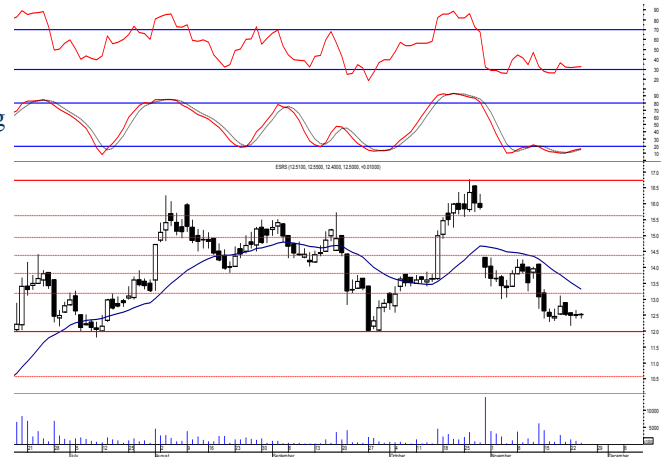
El-Ezz steel rebar's' (ESRS.CA):

Prices remained narrowly flat after quiet trading performance overwhelmed most of the day closing slightly positive leaving everything in place.

As we said, bears gained back the near term technical advantage and therefore the upside potential will be invalid so stay heads up.

We recommend staying on cash till a confirmed buy signal is clearly evident.

Support levels: 12.00, 10.55
Resistance levels: 13.20, 13.80



Disclaimer

- This publication has been prepared by Blom Egypt Securities for information purposes only.
- It is not intended as an offer to buy or sell or a solicitation of an offer to buy or sell the securities mentioned.
- The information & opinions in this publication were prepared by Blom Egypt Securities research department accepts no liability or legal responsibility for losses & damages incurred arising from the use of this publication or its contents.

Blom Egypt Securities
Samir M. Azmi, CFTe, CETA
Senior Technical Analyst
samir.azmi@blomsecurities.com



Most active Stocks

Daily Technical Analysis Report

25 Nov, 2021

Stock Name (Reuters' Code)	Close	Trend	T1	T2	Support	Resistance	SL	Triggers	
								Lower	Upper
Building Materials & Construction									
Arabian cement (ARCC.CA)	3.80	Up-Corr.	---	---	3.77	4.10	3.20	---	---
El Ezz Steel Rebar's (ESRS.CA)	12.50	Bearish	---	---	12.00	13.20	---	---	---
GB auto (AUTO.CA)	3.85	Up-Corr.	---	---	3.70	3.90	3.57	---	---
Orascom construction (ORAS.CA)	70.00	Dn.-Corr.	---	---	68.50	71.70	68.50	---	---
South Valley Cement (SVCE.CA)	1.282	Bearish	---	---	1.15	1.325	---	---	---
Elswedey Cables (SWDY.CA)	8.36	UP-Corr.	---	---	7.90	8.35	7.90	---	---
Upper Egypt general contracting (UEGC.CA)	0.627	Up-Corr.	---	---	0.61	0.655	0.57	---	---
Chemicals									
Abu-Qir fertilizers (ABUK.CA)	19.12	Dn.-Corr.	---	---	19.20	19.85	19.20	---	---
Egyptian Financial & Indust. (EFIC.CA)	12.10	Bearish	---	---	12.10	12.65	---	---	---
Egyptian chemical industries-Kima (EGCH.CA)	3.14	Up-Corr.	---	---	3.00	3.35	3.00	---	---
Communications									
Fawry for banking tech. & electronic payment (FWRY.CA)	12.09	Bearish	---	---	11.75	12.40	---	---	---
Orascom investment holding (OIH.CA)	0.213	Bearish	---	---	0.195	0.216	---	---	---
Telecom Egypt (ETEL.CA)	14.50	Dn.-Corr.	---	---	13.80	14.80	12.90	---	---
Financial Services									
Abu Dhabi International Bank (ADIB.CA)	14.53	Up-Corr.	---	---	14.10	15.10	12.60	---	---
Arabian for investments & development (AIH.CA)	0.334	Bearish	---	---	0.31	0.37	---	---	---
Amer holding group (AMER.CA)	0.92	Bearish	---	---	0.905	0.96	---	---	---
Commercial International Bank (COMI.CA)	51.87	Dn.-Corr.	---	---	51.60	52.80	46.60	---	---
Export development bank of Egypt (EXPA.CA)	9.02	Bearish	---	---	8.10	9.20	---	---	---
Holding Companies									
Citadel capital (CCAP.CA)	1.15	Up-Corr.	---	---	1.09	1.17	1.09	---	---
Hermes Holding (HRHO.CA)	13.87	Bullish	14.25	15.20	13.40	14.45	11.25	---	---
Kuwaiti Holding (EKHO.CA)	1.39	Bullish	1.59	1.75	1.39	1.59	1.22	---	---
MM group for industry & international trade (MTIE.CA)	5.81	Bearish	---	---	5.60	5.90	---	---	---
Orascom financial holding (OFH.CA)	0.21	Bearish	---	---	0.195	0.23	---	---	---
Housing & Real Estate									
Egyptian For Tourism Resorts (EGTS.CA)	1.28	Bearish	---	---	1.21	1.47	---	---	---
Elshams housing (ELSH.CA)	7.83	Up-Corr.	---	---	7.70	8.30	5.40	---	---
Emaar holding (EMFD.CA)	2.52	Dn.-Corr.	---	---	2.50	2.645	2.28	---	---
Heliopolis housing & development (HELL.CA)	4.23	Bearish	---	---	4.10	4.60	---	---	---
Medinet Nasr for housing & Deve. (MNHD.CA)	2.32	Up-Corr.	---	---	2.16	2.40	2.16	---	---
6th. October Deve. Inv. (OCDI.CA)	19.30	Bullish	19.60	21.50	18.80	19.60	16.90	---	---
Palm hills development Co. (PHDC.CA)	1.771	Up-Corr.	---	---	1.72	1.83	1.72	---	---
Talaat Mustafa group holding (TMGH.CA)	7.66	Dn.-Corr.	---	---	7.50	8.00	6.90	---	---
Mining & Gas									
Alexandria Mineral Oils Co. (AMOC.CA)	3.70	Dn.-Corr.	---	---	3.55	3.75	3.55	---	---
Sidi Kerir Petrochemicals (SKPC.CA)	6.68	Bearish	---	---	6.30	6.80	---	---	---
Textiles & Clothes									
Arab Co. for asset management & Deve. (ACAMD.CA)	0.40	Bearish	---	---	0.35	0.43	---	---	---
Arab cotton ginning (ACGC.CA)	1.68	Up-Corr.	---	---	1.62	1.74	1.455	---	---
Oriental Weavers (ORWE.CA)	8.50	Dn.-Corr.	---	---	8.05	8.55	7.50	---	---
Other Sectors									
Egyptian Media Production City (MPRC.CA)	4.53	Bearish	---	---	4.40	4.75	---	---	---
Egyptian Transport - Egytrans (ETRS.CA)	10.81	Up-Corr.	---	---	9.80	11.30	9.80	---	---
Orascom holding development (ORHD.CA)	5.75	Up-Corr.	---	---	5.55	5.80	4.64	---	---
United Arab Shipping (UASG.CA)	0.87	Bearish	---	---	0.80	0.945	---	---	---

Disclaimer

- This publication has been prepared by Blom Egypt Securities for information purposes only.
- It is not intended as an offer to buy or sell or a solicitation of an offer to buy or sell the securities mentioned.
- The information & opinions in this publication were prepared by Blom Egypt Securities research department accepts no liability or legal responsibility for losses & damages incurred arising from the use of this publication or its contents.

Blom Egypt Securities
Samir M. Azmi, CFTe, CETA
Senior Technical Analyst
samir.azmi@blomsecurities.com



Guidelines for using BLOM daily Technical Analysis Report

<u>Close:</u>	Is recorded as the last trade in the session.
<u>Trend:</u>	
Bullish :	The strategy is to buy the dips.
Bearish :	The strategy is to sell the rallies.
Flat :	The strategy is to trade the range between the triggers.
Up-Corr. :	A move against the major trend when it is down.
Dn.-Corr. :	A move against the major trend when it is up.
<u>Targets :</u>	Take some profit by reducing a portion of the position whenever a price target is been hit.
<u>Support :</u>	A level below market price (previous lows) where buyers showed strength, in a bull market buy near the support and don't sell on the resistance. A break below the Support is considered to be a bearish sign.
<u>Resistance :</u>	A level above market price (previous highs) where sellers showed strength, in a bear market sell near the resistance level and don't buy on the support. A break above the resistance is considered to be a bullish sign.
<u>Stop Loss :</u>	Must exit the current position whenever the closing price is (1% to 2%) below the stop loss and confirmed by volume.
<u>Triggers :</u>	The range between the lower trigger and the upper is used for trading, break of any of them, the move would continue in the same direction.
<u>Yellow rows:</u>	indication that the stock closed below/above support, stop-loss, or resistance but the break is not confirmed yet.

Disclaimer

- This publication has been prepared by Blom Egypt Securities for information purposes only.
- It is not intended as an offer to buy or sell or a solicitation of an offer to buy or sell the securities mentioned.
- The information & opinions in this publication were prepared by Blom Egypt Securities research department accepts no liability or legal responsibility for losses & damages incurred arising from the use of this publication or its contents.

Blom Egypt Securities
Samir M. Azmi, CFTe, CETA
Senior Technical Analyst
samir.azmi@blomsecurities.com