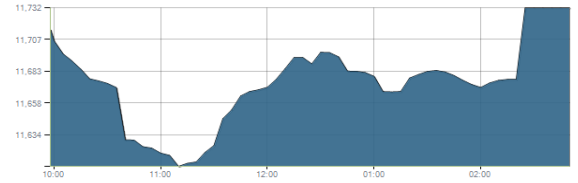




Indices intraday trends

EGX 30

مؤشر EGX 30
اليوم - 20/01/2022

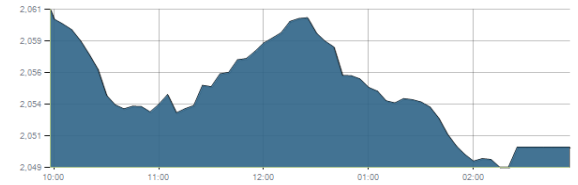


Key Levels

Support 1	11675	Resistance 1	11900
Support 2	11440	Resistance 2	12250

EGX 50 EWI

مؤشر EGX 50 EWI
اليوم - 20/01/2022

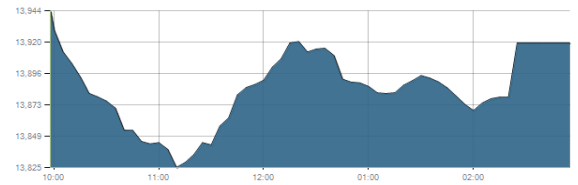


Key Levels

Close		2050.44	
Support 1	2060	Resistance 1	2150
Support 2	1990	Resistance 2	2210

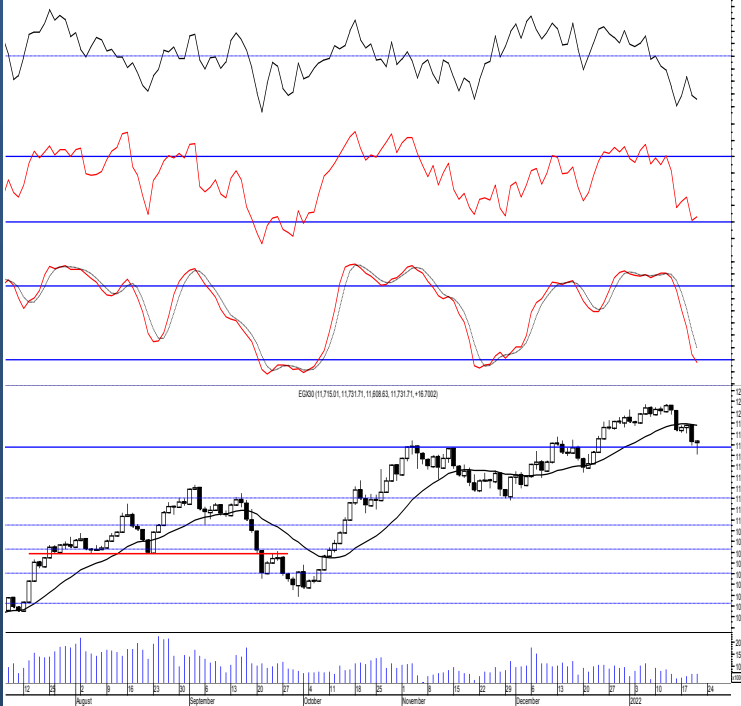
EGX 30 capped

مؤشر EGX 30 Capped
اليوم - 20/01/2022



Key Levels

Close		13919.86	
Support 1	13800	Resistance 1	14150
Support 2	13550	Resistance 2	14325



Market Commentary:

The EGX30 closed in green on the high after managing to rebound from the early decline successfully defending the support level 11675 closing within the same range leaving everything in place. Rebounding from current levels is expected after successfully testing the mentioned support.

As we said, medium term targets now 12250 & 12850, while short term, targets will be 11900 & 12070. We recommend to be conservative and very selective keeping close stops placed and expected to reduce market risk. Notice that any retreating below 11675 will put the market under stress leading to further decline due to lack of confidence so stay alerted and disciplined.

Close	11731.71	Trend	Dn.-Corr.
Pre. Close	11876.44	Target 1	---
Change	↑ 16.70 (0.14%)	Target 2	---
Day's range	11608.63 — 11731.71	Stop-loss	11200
52week's high	12069.23	52week's low	9769.18

Disclaimer

- This publication has been prepared by Blom Egypt Securities for information purposes only.
- It is not intended as an offer to buy or sell or a solicitation of an offer to buy or sell the securities mentioned.
- The information & opinions in this publication were prepared by Blom Egypt Securities research department accepts no liability or legal responsibility for losses & damages incurred arising from the use of this publication or its contents.

Blom Egypt Securities
Samir M. Azmi, CFTe, CETA
Senior Technical Analyst
samir.azmi@blomsecurities.com

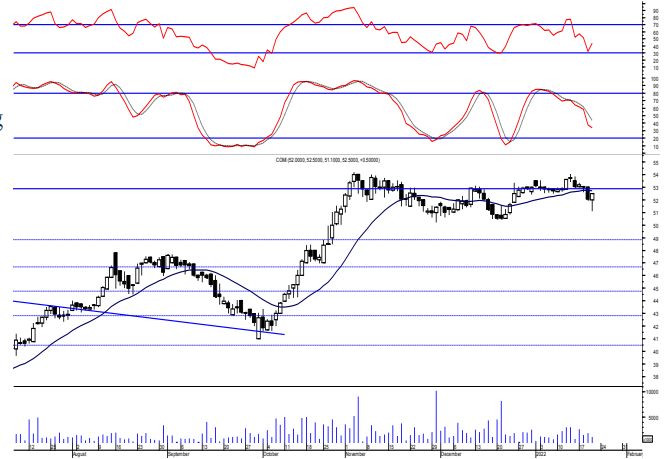


Commercial international bank (COMI.CA):

Prices fell lower ahead of the session trading below the support level 51.60 before rebounding process takes place closing on the session's high within the same range.

We recommend to wait for a successful breakout to the resistance level 52.80 or on the other hand existing positions to hold watching the mentioned supports very carefully.

Support levels: 51.60, 50.20
Resistance levels: 52.80, 54.15

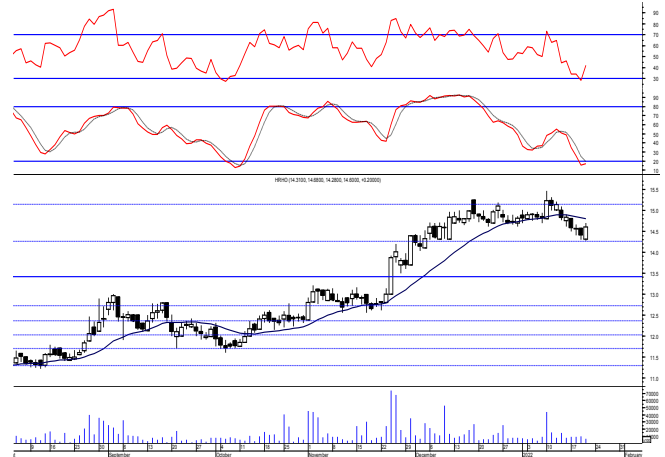


Hermes Holding (HRHO.CA):

Prices managed to restore the support level 14.45 turning it back into support. Quick trades could be opened keeping the mentioned support placed and respected as being able to sustain supports the upside potential.

We recommend to keep stops placed and respected and wait for new positions till a clear buy signal is clearly given.

Support levels: 14.45, 14.00
Resistance levels: 15.25, 16.35

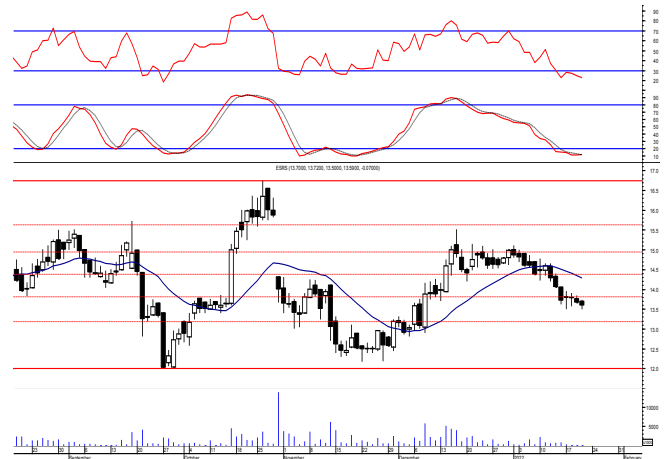


El-Ezz steel rebar's' (ESRS.CA):

Prices remained narrowly flat closing slightly negative keeping levels unchanged and so for our outlook. As we said, by failing to defend the mentioned support, further decline is now expected to the prominent support level 13.20.

Yet, it's recommended to stay on cash and wait for a confirmed buy signal to react safely on.

Support levels: 13.20, 12.00
Resistance levels: 13.80, 14.50



Disclaimer

- This publication has been prepared by Blom Egypt Securities for information purposes only.
- It is not intended as an offer to buy or sell or a solicitation of an offer to buy or sell the securities mentioned.
- The information & opinions in this publication were prepared by Blom Egypt Securities research department accepts no liability or legal responsibility for losses & damages incurred arising from the use of this publication or its contents.

Blom Egypt Securities
Samir M. Azmi, CFTe, CETA
Senior Technical Analyst
samir.azmi@blomsecurities.com



Most active Stocks

Daily Technical Analysis Report

23 Jan, 2022

Stock Name (Reuters' Code)	Close	Trend	T1	T2	Support	Resistance	SL	Triggers	
								Lower	Upper
Building Materials & Construction									
Arabian Cement (ARCC.CA)	4.21	Dn.-Corr.	—	—	4.10	4.40	3.60	—	—
GB Auto (AUTO.CA)	4.80	Dn.-Corr.	—	—	4.65	5.00	4.35	—	—
El Ezz Steel Rebar's (ESRS.CA)	13.59	Up-Corr.	—	—	13.20	13.80	13.20	—	—
Orascom Construction (ORAS.CA)	77.00	Dn.-Corr.	—	—	74.00	77.50	68.50	—	—
South Valley Cement (SVCE.CA)	1.461	Dn.-Corr.	—	—	1.36	1.48	1.36	—	—
Elswedey Cables (SWDY.CA)	9.26	Dn.-Corr.	—	—	9.00	9.40	8.60	—	—
Upper Egypt General Contracting (UEGC.CA)	0.67	Dn.-Corr.	—	—	0.639	0.69	0.639	—	—
Chemicals									
Abu-Qir Fertilizers (ABUK.CA)	21.54	Dn.-Corr.	—	—	20.90	21.70	17.90	—	—
Egyptian Financial & Indust. (EFIC.CA)	13.19	Up-Corr.	—	—	12.50	13.70	11.40	—	—
Egyptian Chemical Industries-Kima (EGCH.CA)	3.92	Up-Corr.	—	—	3.80	4.10	3.00	—	—
Communications									
Telecom Egypt (ETEL.CA)	16.61	Bullish	18.30	19.25	16.60	18.30	14.70	—	—
Fawry For Banking Tech. & Electronic Payment (FWRY.CA)	11.30	Bearish	—	—	10.90	11.80	—	—	—
Orascom Investment Holding (OIH.CA)	0.222	Up-Corr.	—	—	0.215	0.235	0.20	—	—
Financial Services									
Abu Dhabi International Bank (ADIB.CA)	15.07	Up-Corr.	—	—	14.90	15.50	12.60	—	—
Arabian For Investments & Development (AIH.CA)	0.375	Dn.-Corr.	—	—	0.37	0.40	0.35	—	—
Amer Holding Group (AMER.CA)	0.941	Up-Corr.	—	—	0.94	1.01	0.85	—	—
Credit Agricole (CIEB.CA)	8.02	Bullish	8.45√	9.15	7.80	8.45	6.80	—	—
Commercial International Bank (COMI.CA)	52.50	Dn.-Corr.	—	—	51.60	52.80	46.60	—	—
Export Development Bank Of Egypt (EXPA.CA)	9.60	Up-Corr.	—	—	9.15	9.70	8.60	—	—
Holding Companies									
B Investments Holdings (BINV.CA)	11.20	Up-Corr.	—	—	11.00	12.20	9.80	—	—
Citadel Capital (CCAP.CA)	1.202	Up-Corr.	—	—	1.17	1.24	1.09	—	—
Kuwaiti Holding (EKHO.CA)	1.399	Dn.-Corr.	—	—	1.342	1.405	1.22	—	—
Hermes Holding (HRHO.CA)	14.60	Dn.-Corr.	—	—	14.45	15.25	11.25	—	—
MM Group For Industry & International Trade (MTIE.CA)	7.57	Bullish	7.60√	8.10	7.55	8.10	6.60	—	—
Orascom Financial Holding (OFH.CA)	0.223	Up-Corr.	—	—	0.208	0.23	0.208	—	—
Housing & Real Estate									
Egyptian For Tourism Resorts (EGTS.CA)	1.45	Up-Corr.	—	—	1.43	1.50	1.23	—	—
El-shams Housing (ELSH.CA)	8.40	Up-Corr.	—	—	7.80	8.40	7.40	—	—
Emaar Holding (EMFD.CA)	2.95	Bullish	3.00√	3.20	2.80	3.10	2.70	—	—
Heliopolis Housing & Development (HELI.CA)	6.35	Dn.-Corr.	—	—	5.75	6.50	—	—	—
Medinet Nasr For Housing & Deve. (MNHD.CA)	2.74	Up-Corr.	—	—	2.72	2.90	2.52	—	—
Palm Hills Development Co. (PHDC.CA)	1.794	Up-Corr.	—	—	1.72	1.84	1.72	—	—
Talaat Mustafa Group Holding (TMGH.CA)	8.99	Dn.-Corr.	—	—	8.90	9.50	7.60	—	—
Mining & Gas									
Alexandria Mineral Oils Co. (AMOC.CA)	3.89	Dn.-Corr.	—	—	3.77	4.05	3.33	—	—
Sidi Kerir Petrochemicals (SKPC.CA)	7.45	Up-Corr.	—	—	7.20	7.75	6.30	—	—
Textiles & Clothes									
Arab Co. For Asset Management & Deve. (ACAMD.CA)	0.479	Up-Corr.	—	—	0.475	0.505	0.42	—	—
Arab Cotton Ginning (ACGC.CA)	1.662	Up-Corr.	—	—	1.65	1.81	1.455	—	—
Oriental Weavers (ORWE.CA)	8.60	Dn.-Corr.	—	—	8.40	8.75	7.50	—	—
Other Sectors									
Egyptian Media Production City (MPRC.CA)	5.66	Up-Corr.	—	—	5.55	6.00	4.80	—	—
Orascom Holding Development (ORHD.CA)	5.52	Up-Corr.	—	—	5.35	5.60	5.15	—	—
Delta Sugar (SUGR.CA)	15.26	Up-Corr.	—	—	15.30	17.00	13.30	—	—
United Arab Shipping (UASG.CA)	0.968	Up-Corr.	—	—	0.96	1.04	0.80	—	—

Disclaimer

- This publication has been prepared by Blom Egypt Securities for information purposes only.
- It is not intended as an offer to buy or sell or a solicitation of an offer to buy or sell the securities mentioned.
- The information & opinions in this publication were prepared by Blom Egypt Securities research department accepts no liability or legal responsibility for losses & damages incurred arising from the use of this publication or its contents.

Blom Egypt Securities
Samir M. Azmi, CFTe, CETA
Senior Technical Analyst
samir.azmi@blomsecurities.com



Guidelines for using BLOM daily Technical Analysis Report

<u>Close:</u>	Is recorded as the last trade in the session.
<u>Trend:</u>	
Bullish :	The strategy is to buy the dips.
Bearish :	The strategy is to sell the rallies.
Flat :	The strategy is to trade the range between the triggers.
Up-Corr. :	A move against the major trend when it is down.
Dn.-Corr. :	A move against the major trend when it is up.
<u>Targets :</u>	Take some profit by reducing a portion of the position whenever a price target is been hit.
<u>Support :</u>	A level below market price (previous lows) where buyers showed strength, in a bull market buy near the support and don't sell on the resistance. A break below the Support is considered to be a bearish sign.
<u>Resistance :</u>	A level above market price (previous highs) where sellers showed strength, in a bear market sell near the resistance level and don't buy on the support. A break above the resistance is considered to be a bullish sign.
<u>Stop Loss :</u>	Must exit the current position whenever the closing price is (1% to 2%) below the stop loss and confirmed by volume.
<u>Triggers :</u>	The range between the lower trigger and the upper is used for trading, break of any of them, the move would continue in the same direction.
<u>Yellow rows:</u>	indication that the stock closed below/above support, stop-loss, or resistance but the break is not confirmed yet.

Disclaimer

- This publication has been prepared by Blom Egypt Securities for information purposes only.
- It is not intended as an offer to buy or sell or a solicitation of an offer to buy or sell the securities mentioned.
- The information & opinions in this publication were prepared by Blom Egypt Securities research department accepts no liability or legal responsibility for losses & damages incurred arising from the use of this publication or its contents.

Blom Egypt Securities
Samir M. Azmi, CFTe, CETA
Senior Technical Analyst
samir.azmi@blomsecurities.com