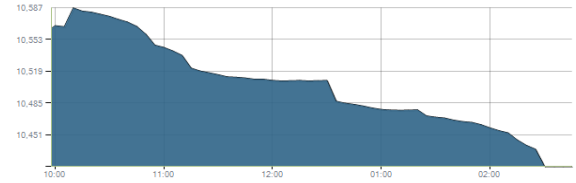




Indices intraday trends

EGX 30

مؤشر EGX 30  
اليوم - 04/04/2021

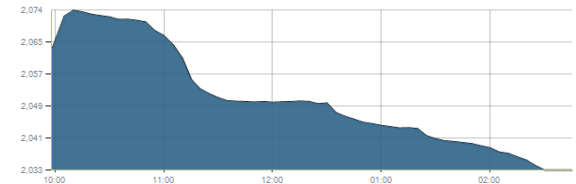


Key Levels

Support 1	10414	Resistance 1	10540
Support 2	10060	Resistance 2	10700

EGX 50 EWI

مؤشر EGX 50 EWI  
اليوم - 04/04/2021

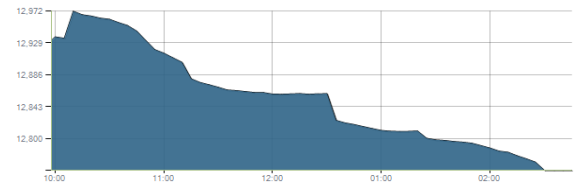


Key Levels

Close		2032.53	
Support 1	1990	Resistance 1	2050
Support 2	1890	Resistance 2	2150

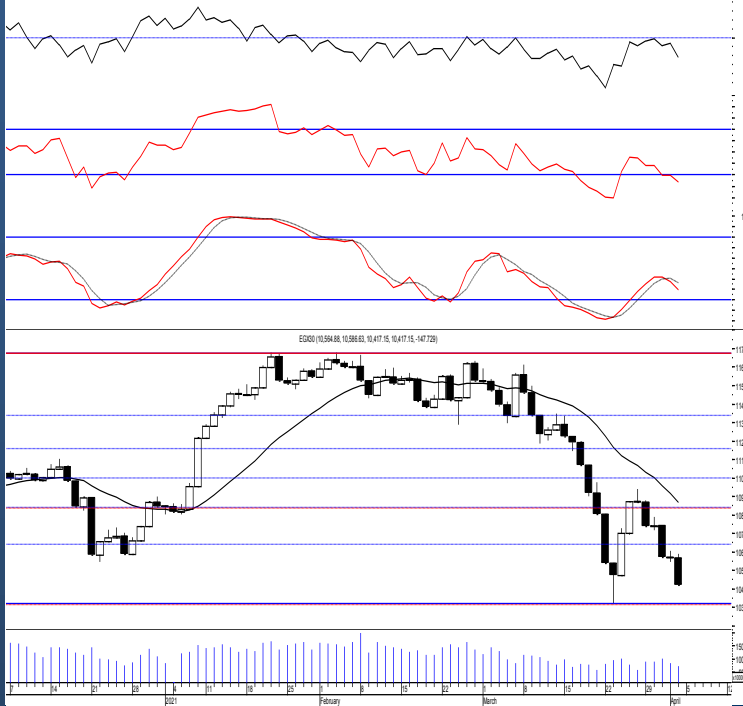
EGX 30 capped

مؤشر EGX 30 Capped  
اليوم - 04/04/2021



Key Levels

Close		12756.61	
Support 1	12640	Resistance 1	12870
Support 2	12000	Resistance 2	13170



Market Commentary:

The EGX30 closed deeply in red as selling pressure dominated pulling the index back approaching the major support level 10414 where as we said we recommend to watch very carefully.

New opened short term trades and old positions are advised to watch their stops very carefully as the violation of the mentioned level elevates the market risk which increases the downside potential.

New trades should wait for a confirmed buy signal to react safely on.

Close	10417.15	Trend	Up-Corr.
Pre. Close	10564.88	Target 1	—
Change	↓ 147.73 ( 1.40% )	Target 2	—
Day's range	10586.63 — 10417.15	Stop-loss	10414.00
52week's high	11675.69	52week's low	8113.82

Disclaimer

- This publication has been prepared by Blom Egypt Securities for information purposes only.
- It is not intended as an offer to buy or sell or a solicitation of an offer to buy or sell the securities mentioned.
- The information & opinions in this publication were prepared by Blom Egypt Securities research department accepts no liability or legal responsibility for losses & damages incurred arising from the use of this publication or its contents.

**Blom Egypt Securities**  
Samir M. Azmi, CFTe, CETA  
Senior Technical Analyst  
samir.azmi@blomsecurities.com



**Commercial international bank (COMI.CA):**

Prices remained under stress violating the support level 56.70 closing below turning it into resistance.

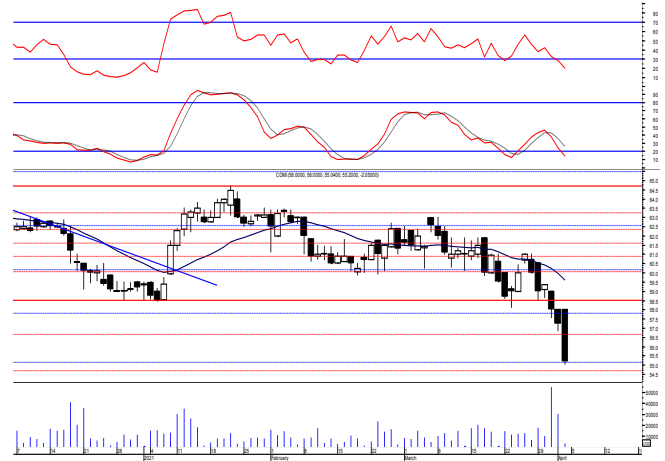
Yet, bears now have the short and medium term technical advantage.

Further decline now is still expected to extend to 54.60.

We recommend to stay on cash and wait fro a confirmed buy signal to react safely on.

Support levels: 54.60, 50.00

Resistance levels: 56.70, 58.50



**Hermes Holding (HRHO.CA):**

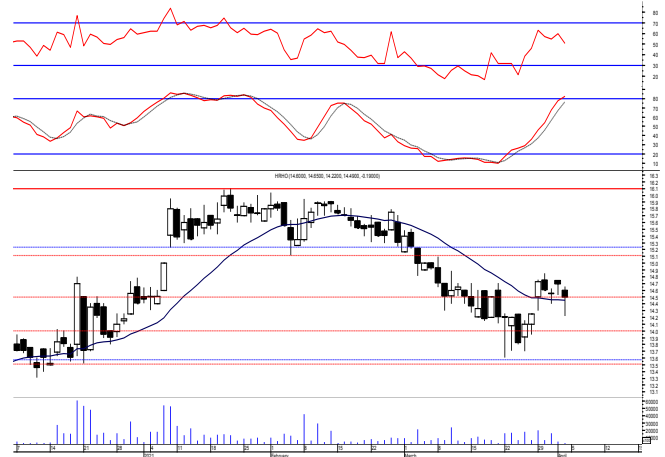
Prices extended lower violating the support level 14.60 closing below turning it into resistance.

Testing the recent reached low 13.60 and the support level 13.50 is now expected where we should watch.

Close stops should always be placed and respected to protect the downside.

Support levels: 13.50, 12.90

Resistance levels: 14.60, 15.25-15.55



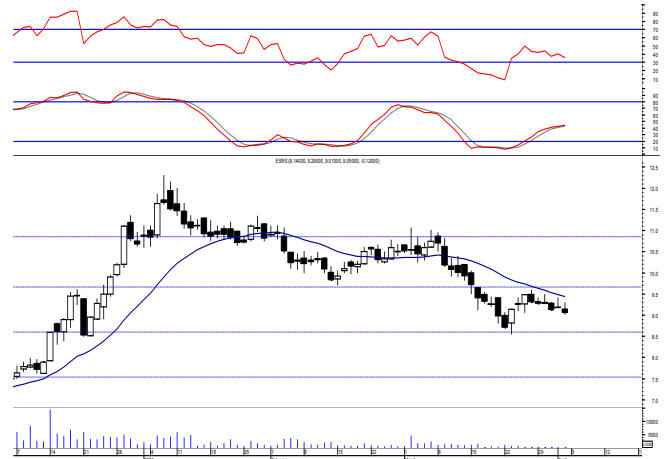
**El-Ezz steel rebar's' (ESRS.CA):**

Prices remained narrowly flat closing within the same range as quiet trading performance dominated keeping our outlook the same.

Short term trades may be opened on current levels as further climbing will probably take place testing the resistance level 9.80 where we may use for quick trading bearing in mind that close stops should be placed and respected

Support levels: 8.50, 7.50

Resistance levels: 9.80, 10.60



**Disclaimer**

- This publication has been prepared by Blom Egypt Securities for information purposes only.
- It is not intended as an offer to buy or sell or a solicitation of an offer to buy or sell the securities mentioned.
- The information & opinions in this publication were prepared by Blom Egypt Securities research department accepts no liability or legal responsibility for losses & damages incurred arising from the use of this publication or its contents.

**Blom Egypt Securities**  
**Samir M. Azmi, CFTe, CETA**  
**Senior Technical Analyst**  
**samir.azmi@blomsecurities.com**



بلوم مصر لتداول الأوراق المالية

BLOM EGYPT SECURITIES



Most active Stocks

Daily Technical Analysis Report

5 Apr, 2021

Stock Name (Reuters' Code)	Close	Trend	T1	T2	Support	Resistance	SL	Triggers	
								Lower	Upper
<b>Building Materials &amp; Construction</b>									
Arabian cement (ARCC.CA)	2.80	Bearish	—	—	2.75	3.00	—	—	—
El Ezz Steel Rebar's (ESRS.CA)	9.05	Bearish	—	—	8.50	9.80	—	—	—
GB auto (AUTO.CA)	3.75	Dn.-Corr.	—	—	3.65	3.80	3.65	—	—
Orascom construction (ORAS.CA)	87.05	Dn.-Corr.	—	—	85.50	88.00	81.00	—	—
South Valley Cement (SVCE.CA)	1.544	Bearish	—	—	1.44	1.63	—	—	—
Elsweddy Cables (SWDY.CA)	8.94	Up-Corr.	—	—	8.50	9.15	8.50	—	—
Upper Egypt general contracting (UEGC.CA)	0.773	Up-Corr.	—	—	0.725	0.815	0.67	—	—
<b>Chemicals</b>									
Abu-Qir fertilizers (ABUK.CA)	20.00	Dn.-Corr.	—	—	19.20	21.00	19.20	—	—
Egyptian Financial & Indust. (EFIC.CA)	10.60	Up-Corr.	—	—	10.60	11.50	9.60	—	—
Egyptian chemical industries-Kima (EGCH.CA)	3.32	Bearish	—	—	3.05	3.40	—	—	—
<b>Communications</b>									
Orascom investment holding (OIH.CA)	0.278	Dn.-Corr.	—	—	0.275	0.302	0.243	—	—
Telecom Egypt (ETEL.CA)	11.15	Up-Corr.	—	—	10.85	11.40	10.10	—	—
<b>Financial Services</b>									
Abu Dhabi International Bank (ADIB.CA)	10.77	Bearish	—	—	10.70	11.20	—	—	—
Arabian for investments & development (AIH.CA)	0.505	Up-Corr.	—	—	0.46	0.515	0.43	—	—
Amer holding group (AMER.CA)	0.79	Bearish	—	—	0.75	0.87	—	—	—
Commercial International Bank (COMI.CA)	55.20	Bearish	—	—	54.60	56.70	—	—	—
Export development bank of Egypt (EXPA.CA)	12.00	Up-Corr.	—	—	11.90	12.80	11.20	—	—
<b>Holding Companies</b>									
Citadel capital (CCAP.CA)	1.22	Up-Corr.	—	—	1.21	1.29	1.12	—	—
Hermes Holding (HRHO.CA)	14.49	Bearish	—	—	13.50	14.60	—	—	—
Kuwaiti Holding (EKHO.CA)	1.156	Up-Corr.	—	—	1.11	1.17	1.04	—	—
MM group for industry & international trade (MTIE.CA)	9.54	Up-Corr.	—	—	9.30	10.15	8.70	—	—
Orascom financial holding (OFH.CA)	0.309	Up-Corr.	—	—	0.305	0.33	0.275	—	—
Pioneers holding (PIOH.CA)	4.34	Up-Corr.	—	—	4.15	4.55	4.15	—	—
<b>Housing &amp; Real Estate</b>									
Egyptian For Tourism Resorts (EGTS.CA)	1.37	Up-Corr.	—	—	1.35	1.425	1.25	—	—
Elshams housing (ELSH.CA)	4.07	Up-Corr.	—	—	4.00	4.17	4.00	—	—
Emaar holding (EMFD.CA)	2.27	Bearish	—	—	2.25	2.45	—	—	—
Heliopolis housing & development (HELL.CA)	4.97	Up-Corr.	—	—	5.00	5.25	4.30	—	—
Medinet Nasr for housing & Deve. (MNHD.CA)	3.73	Up-Corr.	—	—	3.75	3.97	3.50	—	—
6th. October Deve. Inv. (OCDI.CA)	15.96	Bullish	17.00 <sup>√</sup>	18.70	16.00	17.00	13.90	—	—
Palm hills development Co. (PHDC.CA)	1.587	Dn.-Corr.	—	—	1.53	1.67	1.53	—	—
Talaat Mustafa group holding (TMGH.CA)	6.03	Bearish	—	—	6.00	6.45	—	—	—
<b>Mining &amp; Gas</b>									
Alexandria Mineral Oils Co. (AMOC.CA)	2.53	Up-Corr.	—	—	2.52	2.67	2.52	—	—
Sidi Kerir Petrochemicals (SKPC.CA)	10.01	Dn.-Corr.	—	—	9.80	10.60	9.80	—	—
<b>Textiles &amp; Clothes</b>									
Arab Co. for asset management & Deve. (ACAMD.CA)	0.743	Up-Corr.	—	—	0.73	0.835	0.73	—	—
Arab cotton ginning (ACGC.CA)	1.94	Bearish	—	—	1.90	2.10	—	—	—
Oriental Weavers (ORWE.CA)	7.45	Up-Corr.	—	—	7.00	7.45	6.50	—	—
<b>Other Sectors</b>									
Egyptian Media Production City (MPRC.CA)	5.41	Bearish	—	—	5.10	5.65	—	—	—
Egyptian Transport - Egytrans (ETRS.CA)	11.71	Up-Corr.	—	—	11.50	12.15	10.10	—	—
Orascom holding development (ORHD.CA)	5.23	Dn.-Corr.	—	—	5.05	5.30	4.70	—	—
United Arab Shipping (UASG.CA)	0.825	Up-Corr.	—	—	0.83	0.905	0.78	—	—

Disclaimer

- This publication has been prepared by Blom Egypt Securities for information purposes only.
- It is not intended as an offer to buy or sell or a solicitation of an offer to buy or sell the securities mentioned.
- The information & opinions in this publication were prepared by Blom Egypt Securities research department accepts no liability or legal responsibility for losses & damages incurred arising from the use of this publication or its contents.

**Blom Egypt Securities**  
**Samir M. Azmi, CFTe, CETA**  
**Senior Technical Analyst**  
**samir.azmi@blomsecurities.com**



**Guidelines for using BLOM daily Technical Analysis Report**

<b><u>Close:</u></b>	Is recorded as the last trade in the session.
<b><u>Trend:</u></b>	
<b>Bullish :</b>	The strategy is to buy the dips.
<b>Bearish :</b>	The strategy is to sell the rallies.
<b>Flat :</b>	The strategy is to trade the range between the triggers.
<b>Up-Corr. :</b>	A move against the major trend when it is down.
<b>Dn.-Corr. :</b>	A move against the major trend when it is up.
<b><u>Targets :</u></b>	Take some profit by reducing a portion of the position whenever a price target is been hit.
<b><u>Support :</u></b>	A level below market price (previous lows) where buyers showed strength, in a bull market buy near the support and don't sell on the resistance. A break below the Support is considered to be a bearish sign.
<b><u>Resistance :</u></b>	A level above market price (previous highs) where sellers showed strength, in a bear market sell near the resistance level and don't buy on the support. A break above the resistance is considered to be a bullish sign.
<b><u>Stop Loss :</u></b>	Must exit the current position whenever the closing price is (1% to 2%) below the stop loss and confirmed by volume.
<b><u>Triggers :</u></b>	The range between the lower trigger and the upper is used for trading, break of any of them, the move would continue in the same direction.
<b><u>Yellow rows:</u></b>	indication that the stock closed below/above support, stop-loss, or resistance but the break is not confirmed yet.

**Disclaimer**

- This publication has been prepared by Blom Egypt Securities for information purposes only.
- It is not intended as an offer to buy or sell or a solicitation of an offer to buy or sell the securities mentioned.
- The information & opinions in this publication were prepared by Blom Egypt Securities research department accepts no liability or legal responsibility for losses & damages incurred arising from the use of this publication or its contents.

**Blom Egypt Securities**  
**Samir M. Azmi, CFTe, CETA**  
**Senior Technical Analyst**  
**samir.azmi@blomsecurities.com**