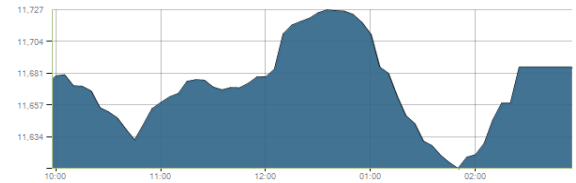




Indices intraday trends

EGX 30

مؤشر EGX 30
اليوم - 03/11/2021

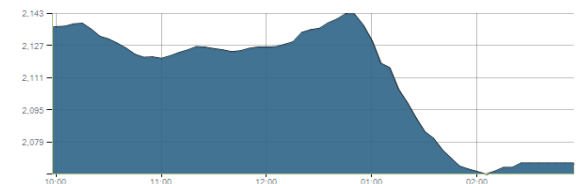


Key Levels

Support 1	11320-11200	Resistance 1	11675
Support 2	11100	Resistance 2	12250

EGX 50 EWI

مؤشر EGX 50 EWI
اليوم - 03/11/2021

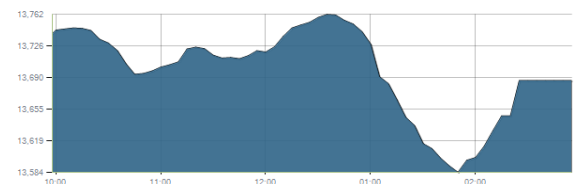


Key Levels

Close		2068.06	
Support 1	2060	Resistance 1	2120
Support 2	1970	Resistance 2	2150

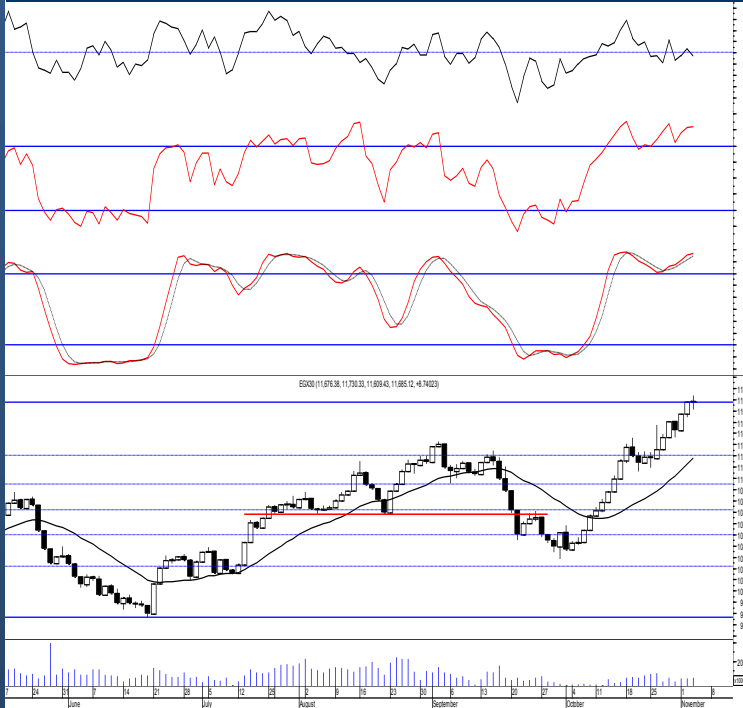
EGX 30 capped

مؤشر EGX 30 Capped
اليوم - 03/11/2021



Key Levels

Close		13686.97	
Support 1	13470	Resistance 1	13820
Support 2	13330	Resistance 2	14100



Market Commentary:

The EGX30 kept fluctuating around our major resistance level 11675 closing slightly above. Trading volumes are still increasing which as we said suggests further climbing clearing our mentioned level but confirmation is still needed so we highly recommend to watch carefully. Trading should be very selective and conservative keeping close stops placed and respected to reduce market risk. Notice that the mentioned support zone should be respected in any decline as any violation to it will indicate that the previous breakout was false and yet further decline will follow.

Close	11676.38	Trend	Bullish
Pre. Close	11685.12	Target 1	11675 ✓
Change	↑ 8.74 (0.07%)	Target 2	12250
Day's range	11609.43 — 11730.33	Stop-loss	10680
52week's high	11675.69	52week's low	9769.18.18

Disclaimer

- This publication has been prepared by Blom Egypt Securities for information purposes only.
- It is not intended as an offer to buy or sell or a solicitation of an offer to buy or sell the securities mentioned.
- The information & opinions in this publication were prepared by Blom Egypt Securities research department accepts no liability or legal responsibility for losses & damages incurred arising from the use of this publication or its contents.

Blom Egypt Securities
Samir M. Azmi, CFTe, CETA
Senior Technical Analyst
samir.azmi@blomsecurities.com

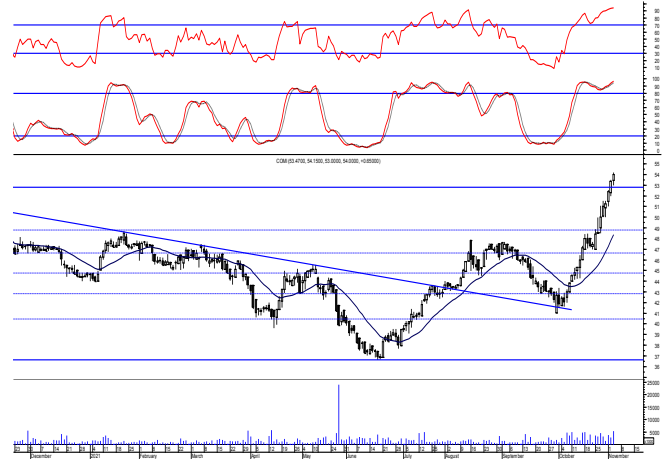


Commercial international bank (COMI.CA):

Prices remained in bullish mode clearing our resistance level 52.80 closing on the session's high.

As we said, by managing to close for the 2nd day the breakout is confirmed for both parties risk takers and conservatives and therefore our target is 57.70 where we can safely trade on keeping our stop below 52.80.

Support levels: 52.80, 51.60
Resistance levels: 57.70, 60.00

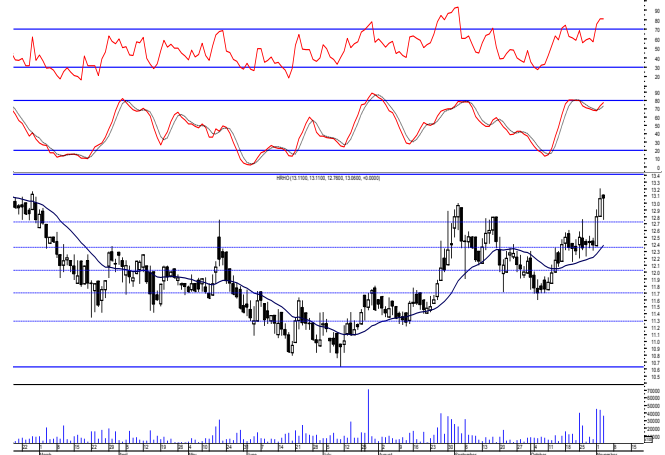


Hermes Holding (HRHO.CA):

Prices inched higher approaching our target and resistance level 13.40 where as we said we may use the range to trade on.

Existing positions are advised to hold keeping stops placed and respected below 12.10 as any decline below will give back the hand to selling party.

Support levels: (12-75-12.60), 12.10
Resistance levels: 13.40, 14.25



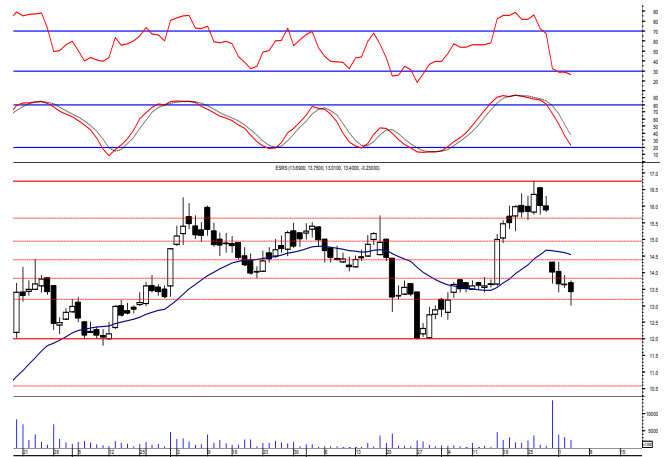
El-Ezz steel rebar's' (ESRS.CA):

Prices witnessed a downward testing the important support level 13.20 managing to rebound from.

Intraday positive signal is evident suggesting possible same day trade where we believe that an upward move will likely reach back near 13.80.

Current levels should be watched carefully as managing to confirm closing above the mentioned level will represent a trigger for further climbing where we may safely use for quick trading

Support levels: 13.80, 13.20
Resistance levels: 14.50, 15.20



Disclaimer

- This publication has been prepared by Blom Egypt Securities for information purposes only.
- It is not intended as an offer to buy or sell or a solicitation of an offer to buy or sell the securities mentioned.
- The information & opinions in this publication were prepared by Blom Egypt Securities research department accepts no liability or legal responsibility for losses & damages incurred arising from the use of this publication or its contents.

Blom Egypt Securities
Samir M. Azmi, CFTe, CETA
Senior Technical Analyst
samir.azmi@blomsecurities.com



Most active Stocks

Daily Technical Analysis Report

4 Nov, 2021

Stock Name (Reuters' Code)	Close	Trend	T1	T2	Support	Resistance	SL	Triggers	
								Lower	Upper
Building Materials & Construction									
Arabian cement (ARCC.CA)	3.87	Up-Corr.	—	—	3.75	4.10	3.20	—	—
El Ezz Steel Rebar's (ESRS.CA)	13.40	Dn.-Corr.	—	—	13.80	14.50	13.20	—	—
GB auto (AUTO.CA)	4.58	Bullish	5.25	5.80	4.45	5.25	3.75	—	—
Orascom construction (ORAS.CA)	71.30	Dn.-Corr.	—	—	71.00	74.50	68.50	—	—
South Valley Cement (SVCE.CA)	1.475	Bearish	—	—	1.324	1.50	—	—	—
Elsweddy Cables (SWDY.CA)	8.50	UP-Corr.	—	—	8.35	8.85	7.90	—	—
Upper Egypt general contracting (UEGC.CA)	0.64	Up-Corr.	—	—	0.614	0.65	0.57	—	—
Chemicals									
Abu-Qir fertilizers (ABUK.CA)	19.39	Dn.-Corr.	—	—	19.20	19.90	19.20	—	—
Egyptian Financial & Indust. (EFIC.CA)	12.23	Up-Corr.	—	—	12.10	12.70	12.10	—	—
Egyptian chemical industries-Kima (EGCH.CA)	3.33	Bearish	—	—	3.00	3.35	—	—	—
Communications									
Fawry for banking tech. & electronic payment (FWRY.CA)	14.55	Up-Corr.	—	—	13.30	14.90	14.90	—	—
Orascom investment holding (OIH.CA)	0.254	Dn.-Corr.	—	—	0.248	0.268	0.215	—	—
Telecom Egypt (ETEL.CA)	13.90	Dn.-Corr.	—	—	13.80	14.30	12.90	—	—
Financial Services									
Abu Dhabi International Bank (ADIB.CA)	13.86	Up-Corr.	—	—	12.60	14.15	12.60	—	—
Arabian for investments & development (AIH.CA)	0.353	Bearish	—	—	0.31	0.37	—	—	—
Amer holding group (AMER.CA)	1.049	Dn.-Corr.	—	—	1.02	1.14	0.96	—	—
Commercial International Bank (COMI.CA)	54.00	Bullish	57.70√	60.00	52.80	57.70	46.60	—	—
Export development bank of Egypt (EXPA.CA)	9.34	Up-Corr.	—	—	9.15	10.10	9.15	—	—
Holding Companies									
Citadel capital (CCAP.CA)	1.276	Up-Corr.	—	—	1.24	1.305	1.09	—	—
Hermes Holding (HRHO.CA)	13.06	Dn.-Corr.	—	—	12.60	13.40	11.25	—	—
Kuwaiti Holding (EKHO.CA)	1.372	Bullish	1.23√	1.39√	1.23	1.39	1.11	—	—
MM group for industry & international trade (MTIE.CA)	6.24	Up-Corr.	—	—	6.20	6.70	6.20	—	—
Orascom financial holding (OFH.CA)	0.229	Bearish	—	—	0.195	0.23	—	—	—
Housing & Real Estate									
Egyptian For Tourism Resorts (EGTS.CA)	1.418	Bearish	—	—	1.21	1.47	—	—	—
Elshams housing (ELSH.CA)	6.32	Up-Corr.	—	—	6.04	6.75	6.04	—	—
Emaar holding (EMFD.CA)	2.51	Dn.-Corr.	—	—	2.50	2.575	2.28	—	—
Heliopolis housing & development (HELL.CA)	4.15	Bearish	—	—	4.10	4.60	—	—	—
Medinet Nasr for housing & Deve. (MNHD.CA)	2.24	Up-Corr.	—	—	2.16	2.27	2.16	—	—
6th. October Deve. Inv. (OCDI.CA)	18.30	Flat	—	—	—	—	16.90	17.90	19.25
Palm hills development Co. (PHDC.CA)	1.917	Dn.-Corr.	—	—	1.90	1.96	1.73	—	—
Talaat Mustafa group holding (TMGH.CA)	7.75	Dn.-Corr.	—	—	7.50	7.90	6.90	—	—
Mining & Gas									
Alexandria Mineral Oils Co. (AMOC.CA)	4.31	Bullish	4.40√	4.80	4.00	4.40	3.55	—	—
Sidi Kerir Petrochemicals (SKPC.CA)	7.58	Up-Corr.	—	—	7.20	7.75	7.20	—	—
Textiles & Clothes									
Arab Co. for asset management & Deve. (ACAMD.CA)	0.447	Bearish	—	—	0.43	0.502	—	—	—
Arab cotton ginning (ACGC.CA)	1.68	Up-Corr.	—	—	1.62	1.778	1.455	—	—
Oriental Weavers (ORWE.CA)	8.36	Dn.-Corr.	—	—	8.05	8.55	7.50	—	—
Other Sectors									
Egyptian Media Production City (MPRC.CA)	4.99	Up-Corr.	—	—	4.75	5.10	4.40	—	—
Egyptian Transport - Egytrans (ETRS.CA)	13.45	Up-Corr.	—	—	12.50	13.60	12.50	—	—
Orascom holding development (ORHD.CA)	5.41	Up-Corr.	—	—	5.30	5.55	4.64	—	—
United Arab Shipping (UASG.CA)	0.889	Bearish	—	—	0.80	0.945	—	—	—

Disclaimer

- This publication has been prepared by Blom Egypt Securities for information purposes only.
- It is not intended as an offer to buy or sell or a solicitation of an offer to buy or sell the securities mentioned.
- The information & opinions in this publication were prepared by Blom Egypt Securities research department accepts no liability or legal responsibility for losses & damages incurred arising from the use of this publication or its contents.

Blom Egypt Securities
Samir M. Azmi, CFTe, CETA
Senior Technical Analyst
samir.azmi@blomsecurities.com



Guidelines for using BLOM daily Technical Analysis Report

<u>Close:</u>	Is recorded as the last trade in the session.
<u>Trend:</u>	
Bullish :	The strategy is to buy the dips.
Bearish :	The strategy is to sell the rallies.
Flat :	The strategy is to trade the range between the triggers.
Up-Corr. :	A move against the major trend when it is down.
Dn.-Corr. :	A move against the major trend when it is up.
<u>Targets :</u>	Take some profit by reducing a portion of the position whenever a price target is been hit.
<u>Support :</u>	A level below market price (previous lows) where buyers showed strength, in a bull market buy near the support and don't sell on the resistance. A break below the Support is considered to be a bearish sign.
<u>Resistance :</u>	A level above market price (previous highs) where sellers showed strength, in a bear market sell near the resistance level and don't buy on the support. A break above the resistance is considered to be a bullish sign.
<u>Stop Loss :</u>	Must exit the current position whenever the closing price is (1% to 2%) below the stop loss and confirmed by volume.
<u>Triggers :</u>	The range between the lower trigger and the upper is used for trading, break of any of them, the move would continue in the same direction.
<u>Yellow rows:</u>	indication that the stock closed below/above support, stop-loss, or resistance but the break is not confirmed yet.

Disclaimer

- This publication has been prepared by Blom Egypt Securities for information purposes only.
- It is not intended as an offer to buy or sell or a solicitation of an offer to buy or sell the securities mentioned.
- The information & opinions in this publication were prepared by Blom Egypt Securities research department accepts no liability or legal responsibility for losses & damages incurred arising from the use of this publication or its contents.

Blom Egypt Securities
Samir M. Azmi, CFTe, CETA
Senior Technical Analyst
samir.azmi@blomsecurities.com