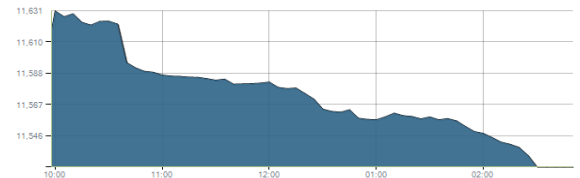




Indices intraday trends

EGX 30

مؤشر EGX 30
اليوم - 28/02/2021

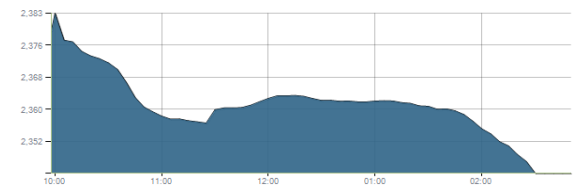


Key Levels

Support 1	11500-11450	Resistance 1	11850
Support 2	11230	Resistance 2	12200

EGX 50 EWI

مؤشر EGX 50 EWI
اليوم - 28/02/2021

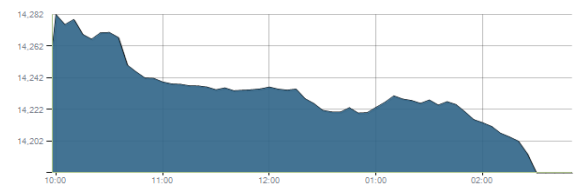


Key Levels

Close		2344.46	
Support 1	2360	Resistance 1	2430
Support 2	2300	Resistance 2	2600

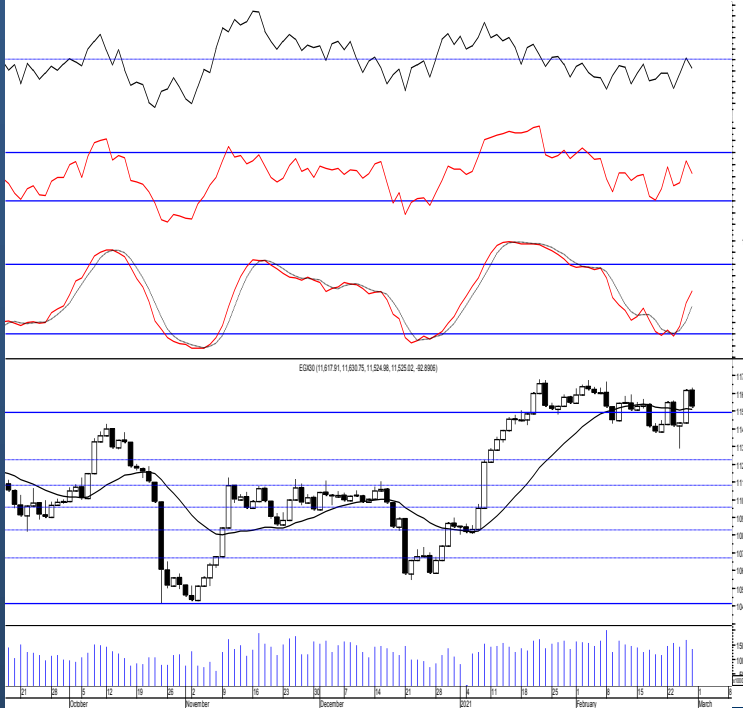
EGX 30 capped

مؤشر EGX 30 Capped
اليوم - 28/02/2021



Key Levels

Close		14181.62	
Support 1	14200	Resistance 1	14750
Support 2	13850	Resistance 2	15400



Market Commentary:

The EGX30 failed to continue higher as selling pressure dominated in most of the stocks pulling the index back near our support zone 11500-11450.

It's very important to sustain above the mentioned support zone to keep the upside potential.

Yet, we recommend to react on every stock separately either that are trading near their supports or that managed to confirm breakout.

Always keep close stops placed and respected to reduce market risk.

Close	11525.02	Trend	Dn.-Corr.
Pre. Close	11617.91	Target 1	---
Change	↓ 92.89 (0.80%)	Target 2	---
Day's range	11630.75 — 11524.98	Stop-loss	11230
52week's high	14831.20	52week's low	8113.82

Disclaimer

- This publication has been prepared by Blom Egypt Securities for information purposes only.
- It is not intended as an offer to buy or sell or a solicitation of an offer to buy or sell the securities mentioned.
- The information & opinions in this publication were prepared by Blom Egypt Securities research department accepts no liability or legal responsibility for losses & damages incurred arising from the use of this publication or its contents.

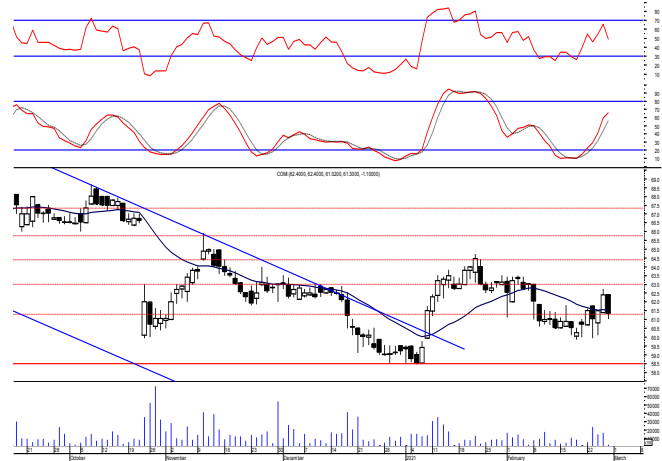
Blom Egypt Securities
Samir M. Azmi, CFTe, CETA
Senior Technical Analyst
samir.azmi@blomsecurities.com



Commercial international bank (COMI.CA):

Prices remained narrowly flat as balanced trading dominated closing slightly negative keeping levels unchanged. Yet, reaching the coming resistance level 63.00 is expected, increasing volumes in rallies is needed to prove real buying strength which will lead to clear the mentioned resistance. New trades should wait for more confirmation while existing ones are advised to keep protective stop placed below 60.00.

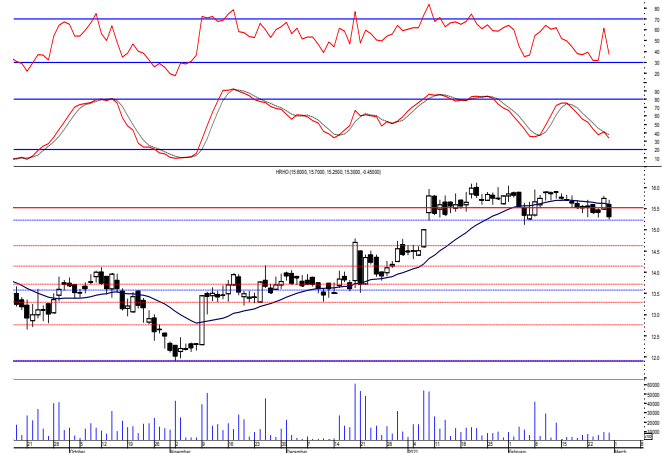
Support levels: 60.00, 58.50
Resistance levels: 63.00, 64.50



Hermes Holding (HRHO.CA):

Prices witnessed an downward move closing near the low failing to continue higher which is against our expectations. Yet, levels are the same and so for our outlook. As we said it is very important to defend the mentioned zone to prove that buyers are still in control. New target zone within 16.60-17.10 where we believe it represents strong retracement level where may use trade on. Close stops should always be placed and respected to protect the downside.

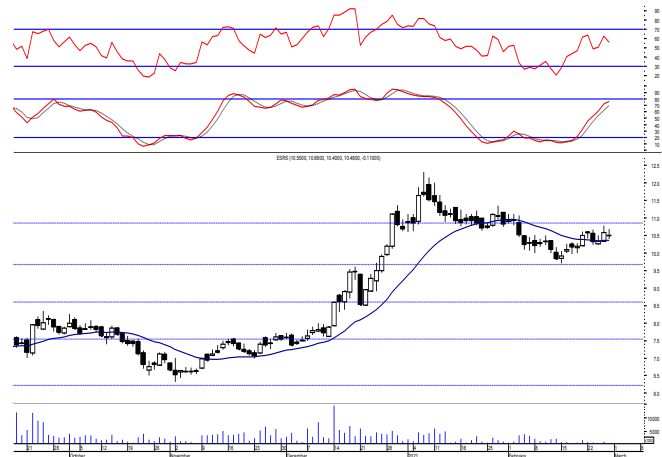
Support levels: 15.55-15.25, 14.60
Resistance levels: 16.60-17.10, 17.80



El-Ezz steel rebar's' (ESRS.CA):

Prices remained flat till the end of the session as balanced trading performance dominated closing slightly negative within the same range so levels are unchanged and so for our outlook. As we said, we may close our sold positions after the violation of 10.60 bearing in mind that any violation to the mentioned support will keep prices under further stress and lower levels will be expected.

Support levels: 9.80, 8.90
Resistance levels: 10.60, 10.90



Disclaimer

- This publication has been prepared by Blom Egypt Securities for information purposes only.
- It is not intended as an offer to buy or sell or a solicitation of an offer to buy or sell the securities mentioned.
- The information & opinions in this publication were prepared by Blom Egypt Securities research department accepts no liability or legal responsibility for losses & damages incurred arising from the use of this publication or its contents.

Blom Egypt Securities
Samir M. Azmi, CFTe, CETA
Senior Technical Analyst
samir.azmi@blomsecurities.com



Most active Stocks

Daily Technical Analysis Report

1 Mar, 2021

Stock Name (Reuters' Code)	Close	Trend	T1	T2	Support	Resistance	SL	Triggers	
								Lower	Upper
Building Materials & Construction									
Arabian cement (ARCC.CA)	3.15	Dn.-Corr.	—	—	3.17	3.40	3.00	—	—
El Ezz Steel Rebar's (ESRS.CA)	10.48	Bearish	—	—	9.80	10.60	—	—	—
GB auto (AUTO.CA)	3.76	Dn.-Corr.	—	—	3.75	3.97	3.48	—	—
Orascom construction (ORAS.CA)	93.14	Dn.-Corr.	—	—	93.00	96.00	81.00	—	—
South Valley Cement (SVCE.CA)	1.96	Dn.-Corr.	—	—	1.84	2.00	1.84	—	—
Elsweddy Cables (SWDY.CA)	9.32	Bearish	—	—	9.15	9.65	—	—	—
Upper Egypt general contracting (UEGC.CA)	0.99	Dn.-Corr.	—	—	0.995	1.09	0.995	—	—
Chemicals									
Abu-Qir fertilizers (ABUK.CA)	21.70	Dn.-Corr.	—	—	21.70	22.70	19.20	—	—
Egyptian Financial & Indust. (EFIC.CA)	12.31	Up-Corr.	—	—	12.00	12.50	11.50	—	—
Egyptian chemical industries-Kima (EGCH.CA)	3.90	Up-Corr.	—	—	3.80	4.00	3.80	—	—
Communications									
Orascom investment holding (OIH.CA)	0.269	Dn.-Corr.	—	—	0.24	0.262	0.20	—	—
Telecom Egypt (ETEL.CA)	11.56	Up-Corr.	—	—	11.40	11.90	11.40	—	—
Financial Services									
Abu Dhabi International Bank (ADIB.CA)	12.27	Dn.-Corr.	—	—	12.00	12.40	11.20	—	—
Arabian for investments & development (AIH.CA)	0.669	Dn.-Corr.	—	—	0.64	0.69	0.59	—	—
Amer holding group (AMER.CA)	1.185	Dn.-Corr.	—	—	1.14	1.25	0.98	—	—
Commercial International Bank (COMI.CA)	61.30	Up-Corr.	—	—	60.00	63.00	58.50	—	—
Export development bank of Egypt (EXPA.CA)	13.25	Up-Corr.	—	—	13.30	14.00	13.30	—	—
Holding Companies									
CI capital holding for financial investments (CICH.CA)	4.58	Bullish	4.87	5.25	4.45	4.87	4.15	—	—
Citadel capital (CCAP.CA)	1.445	Up-Corr.	—	—	1.45	1.53	1.39	—	—
Hermes Holding (HRHO.CA)	15.30	Bullish	16.60	17.80	15.20	17.10	14.60	—	—
Kuwaiti Holding (EKHO.CA)	1.16	Up-Corr.	—	—	1.09	1.18	0.94	—	—
MM group for industry & international trade (MTIE.CA)	11.41	Bullish	12.90√	14.55	11.40	11.80	10.10	—	—
Pioneers holding (PIOH.CA)	5.71	Bullish	5.95√	6.30	5.40	5.95	4.45	—	—
Housing & Real Estate									
Egyptian For Tourism Resorts (EGTS.CA)	1.445	Up-Corr.	—	—	1.45	1.52	1.45	—	—
Elshams housing (ELSH.CA)	4.85	Dn.-Corr.	—	—	4.85	5.05	4.85	—	—
Emaar holding (EMFD.CA)	2.44	Dn.-Corr.	—	—	2.45	2.65	2.45	—	—
Heliopolis housing & development (HELL.CA)	5.52	Up-Corr.	—	—	5.50	5.90	5.50	—	—
Medinet Nasr for housing & Deve. (MNHD.CA)	3.84	Up-Corr.	—	—	3.75	3.97	3.50	—	—
6th. October Deve. Inv. (OCDI.CA)	15.80	Bullish	17.00√	18.70	16.00	17.00	13.90	—	—
Palm hills development Co. (PHDC.CA)	1.676	Dn.-Corr.	—	—	1.66	1.71	1.53	—	—
Talaat Mustafa group holding (TMGH.CA)	6.75	Bearish	—	—	6.60	6.90	—	—	—
Mining & Gas									
Alexandria Mineral Oils Co. (AMOC.CA)	2.98	Dn.-Corr.	—	—	3.00	3.15	3.00	—	—
Sidi Kerir Petrochemicals (SKPC.CA)	10.01	Dn.-Corr.	—	—	9.20	10.60	9.20	—	—
Textiles & Clothes									
Arab Co. for asset management & Deve. (ACAMD.CA)	0.944	Bearish	—	—	0.93	0.99	—	—	—
Arab cotton ginning (ACGC.CA)	3.11	Up-Corr.	—	—	3.05	3.20	2.85	—	—
Oriental Weavers (ORWE.CA)	7.40	Up-Corr.	—	—	7.10	7.45	6.50	—	—
Other Sectors									
Egyptian Media Production City (MPRC.CA)	7.15	Up-Corr.	—	—	7.00	7.50	6.70	—	—
Egyptian Transport - Egytrans (ETRS.CA)	12.12	Dn.-Corr.	—	—	11.60	12.40	10.40	—	—
Orascom holding development (ORHD.CA)	5.46	Dn.-Corr.	—	—	5.35	5.65	4.70	—	—
United Arab Shipping (UASG.CA)	1.14	Dn.-Corr.	—	—	1.15	1.23	1.05	—	—

Disclaimer

- This publication has been prepared by Blom Egypt Securities for information purposes only.
- It is not intended as an offer to buy or sell or a solicitation of an offer to buy or sell the securities mentioned.
- The information & opinions in this publication were prepared by Blom Egypt Securities research department accepts no liability or legal responsibility for losses & damages incurred arising from the use of this publication or its contents.

Blom Egypt Securities
Samir M. Azmi, CFTe, CETA
Senior Technical Analyst
samir.azmi@blomsecurities.com



Guidelines for using BLOM daily Technical Analysis Report

<u>Close:</u>	Is recorded as the last trade in the session.
<u>Trend:</u>	
Bullish :	The strategy is to buy the dips.
Bearish :	The strategy is to sell the rallies.
Flat :	The strategy is to trade the range between the triggers.
Up-Corr. :	A move against the major trend when it is down.
Dn.-Corr. :	A move against the major trend when it is up.
<u>Targets :</u>	Take some profit by reducing a portion of the position whenever a price target is been hit.
<u>Support :</u>	A level below market price (previous lows) where buyers showed strength, in a bull market buy near the support and don't sell on the resistance. A break below the Support is considered to be a bearish sign.
<u>Resistance :</u>	A level above market price (previous highs) where sellers showed strength, in a bear market sell near the resistance level and don't buy on the support. A break above the resistance is considered to be a bullish sign.
<u>Stop Loss :</u>	Must exit the current position whenever the closing price is (1% to 2%) below the stop loss and confirmed by volume.
<u>Triggers :</u>	The range between the lower trigger and the upper is used for trading, break of any of them, the move would continue in the same direction.
<u>Yellow rows:</u>	indication that the stock closed below/above support, stop-loss, or resistance but the break is not confirmed yet.

Disclaimer

- This publication has been prepared by Blom Egypt Securities for information purposes only.
- It is not intended as an offer to buy or sell or a solicitation of an offer to buy or sell the securities mentioned.
- The information & opinions in this publication were prepared by Blom Egypt Securities research department accepts no liability or legal responsibility for losses & damages incurred arising from the use of this publication or its contents.

Blom Egypt Securities
Samir M. Azmi, CFTe, CETA
Senior Technical Analyst
samir.azmi@blomsecurities.com