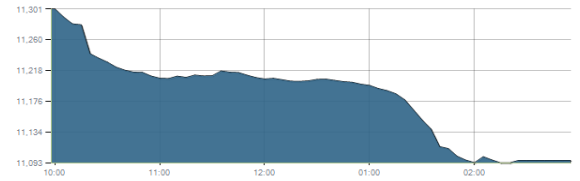




Indices intraday trends

EGX 30

مؤشر EGX 30  
اليوم - 05/09/2021

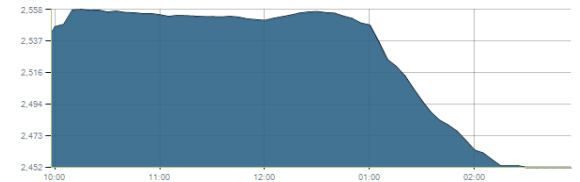


Key Levels

Support 1	11200	Resistance 1	11430
Support 2	10950-10850	Resistance 2	11675

EGX 50 EWI

مؤشر EGX 50 EWI  
اليوم - 05/09/2021

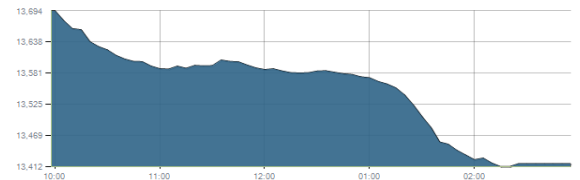


Key Levels

Close		2451.90	
Support 1	2500	Resistance 1	2625
Support 2	2450	Resistance 2	2800

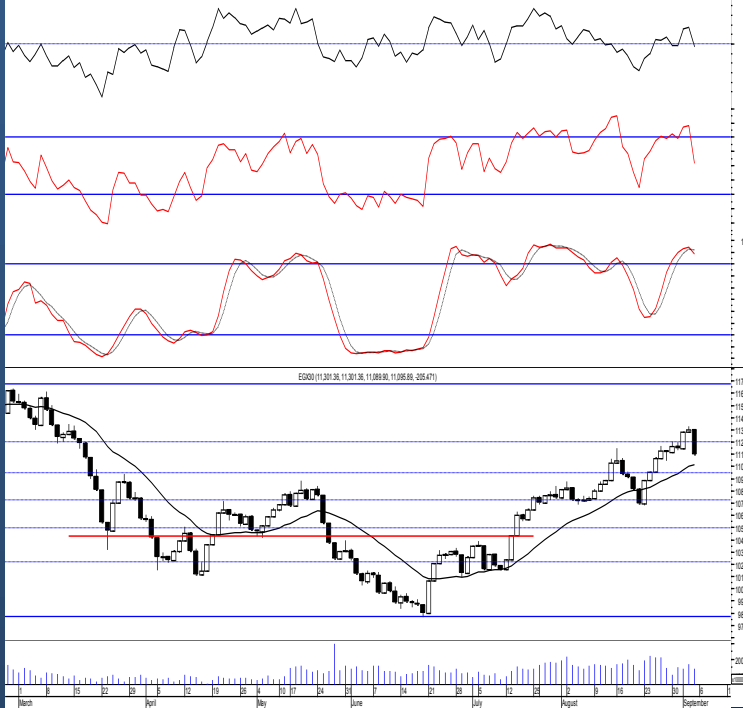
EGX 30 capped

مؤشر EGX 30 Capped  
اليوم - 05/09/2021



Key Levels

Close		13417.14	
Support 1	13400	Resistance 1	13800
Support 2	13130	Resistance 2	14140



Market Commentary:

The EGX30 fell sharply down closing below our important resistance level 11200 as selling pressure dominated most of the session. 2nd day confirmation is still needed to prove turning this levels into resistance which will likely have a negative impact on the market. Till this happens everything is considered in place. As we said, the upside breakout expectations now is fulfilled and our targets are 11430 and 11675 where we believe that the second mentioned level will be reached. Notice that 11675 acts as major resistance level where we recommend to watch carefully. New positions may be tried on current levels keeping protective stop placed below 11200. Existing positions should always keep close stops placed and respected.

Close	11095.89	Trend	Up-Corr.
Pre. Close	11301.36	Target 1	—
Change	↓ 205.47 ( 1.82% )	Target 2	—
Day's range	11301.36 — 11089.90	Stop-loss	9900
52week's high	11675.69	52week's low	9769.18.18

Disclaimer

- This publication has been prepared by Blom Egypt Securities for information purposes only.
- It is not intended as an offer to buy or sell or a solicitation of an offer to buy or sell the securities mentioned.
- The information & opinions in this publication were prepared by Blom Egypt Securities research department accepts no liability or legal responsibility for losses & damages incurred arising from the use of this publication or its contents.

**Blom Egypt Securities**  
Samir M. Azmi, CFTe, CETA  
Senior Technical Analyst  
samir.azmi@blomsecurities.com

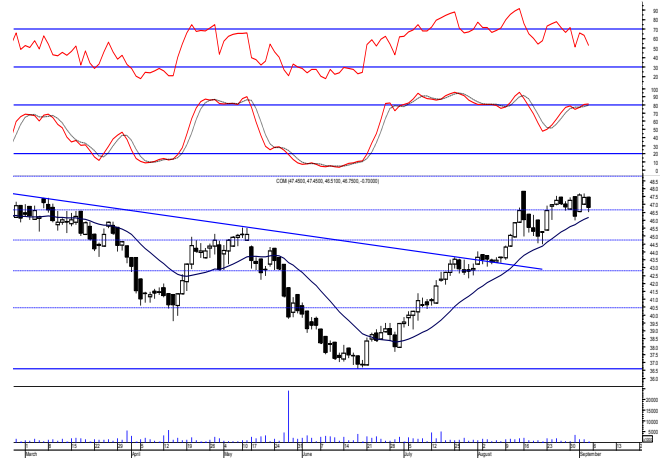


**Commercial international bank (COMI.CA):**

Prices remained quietly flat closing slightly negative as balanced trading performance dominated leaving levels unchanged and so for our outlook. Defending the support level 46.65 keeps the view positive and will lead to climbing to the old targets at 48.80 & 51.60.

Trailing stop strategy should be followed to protect profits and reduce risk

Support levels: 46.65, 44.70  
Resistance levels: 48.80, 51.60

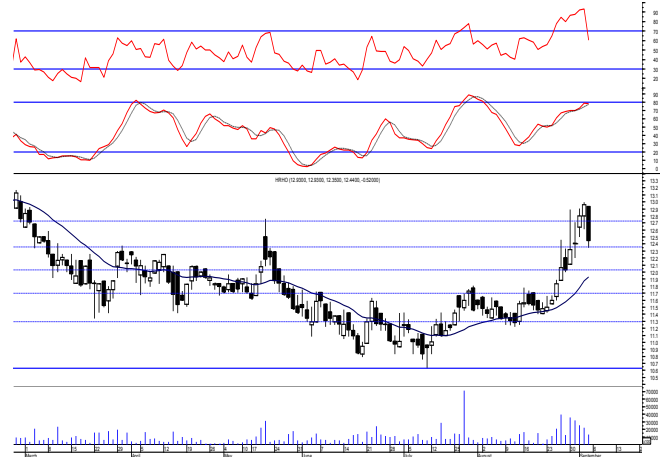


**Hermes Holding (HRHO.CA):**

Prices retreated sharply down closing below our mentioned support zone but still needs confirmation due to low trading volumes which suggests lower selling appetite. Watching the mentioned zone is highly recommended as it represents a turning point for the coming few sessions.

Existing positions are advised to hold keeping stops placed and respected below 11.25 as any decline below will give back the hand to selling party.

Support levels: (12.75-12.60), 12.10  
Resistance levels: (13.25-13.40), 14.25

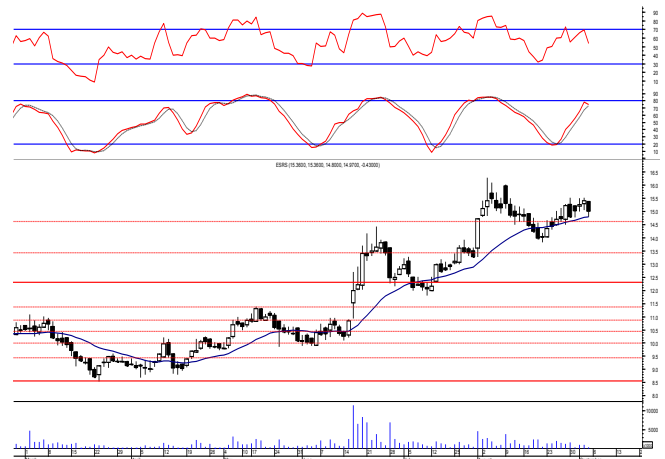


**El-Ezz steel rebar's' (ESRS.CA):**

Prices witnessed a slight downward move ahead of trading before remaining flat till the end of the session leaving levels unchanged and so for our outlook.

We recommend watching the mentioned zone as bullish sentiment will remain intact which as we said will likely push prices higher to retest the previous reached high 16.25 where we may use the range for quick trading. Protective stop should be placed below 14.40.

Support levels: (14.65-14.40), 13.40  
Resistance levels: 16.00, 17.70



**Disclaimer**

- This publication has been prepared by Blom Egypt Securities for information purposes only.
- It is not intended as an offer to buy or sell or a solicitation of an offer to buy or sell the securities mentioned.
- The information & opinions in this publication were prepared by Blom Egypt Securities research department accepts no liability or legal responsibility for losses & damages incurred arising from the use of this publication or its contents.

**Blom Egypt Securities**  
**Samir M. Azmi, CFTe, CETA**  
**Senior Technical Analyst**  
[samir.azmi@blomsecurities.com](mailto:samir.azmi@blomsecurities.com)



Most active Stocks

Daily Technical Analysis Report

6 Sep, 2021

Stock Name (Reuters' Code)	Close	Trend	T1	T2	Support	Resistance	SL	Triggers	
								Lower	Upper
<b>Building Materials &amp; Construction</b>									
Arabian cement (ARCC.CA)	4.60	Dn.-Corr.	—	—	4.65	4.85	4.50	—	—
El Ezz Steel Rebar's (ESRS.CA)	14.97	Dn.-Corr.	—	—	14.40	16.00	11.40	—	—
GB auto (AUTO.CA)	4.10	Bullish	4.20√	4.45	3.95	4.20	3.75	—	—
Orascom construction (ORAS.CA)	77.00	Bullish	78.25√	81.85	74.80	78.25	68.50	—	—
South Valley Cement (SVCE.CA)	2.26	Dn.-Corr.	—	—	2.20	2.47	1.95	—	—
Elswedey Cables (SWDY.CA)	8.56	UP-Corr.	—	—	8.60	9.00	7.40	—	—
Upper Egypt general contracting (UEGC.CA)	0.834	Bullish	0.89	0.93	0.81	0.89	0.73	—	—
<b>Chemicals</b>									
Abu-Qir fertilizers (ABUK.CA)	18.85	Up-Corr.	—	—	18.30	19.70	18.30	—	—
Egyptian Financial & Indust. (EFIC.CA)	14.00	Flat	—	—	—	—	12.85	14.00	15.50
Egyptian chemical industries-Kima (EGCH.CA)	4.61	Dn.-Corr.	4.45√	4.95√	4.45	4.95	3.75	—	—
<b>Communications</b>									
Orascom investment holding (OIH.CA)	0.23	Bullish	0.232√	0.257	0.232	0.257	0.192	—	—
Telecom Egypt (ETEL.CA)	14.50	Dn.-Corr.	15.20√	16.60	14.30	15.70	12.90	—	—
<b>Financial Services</b>									
Abu Dhabi International Bank (ADIB.CA)	15.00	Dn.-Corr.	—	—	14.60	15.60	14.60	—	—
Arabian for investments & development (AIH.CA)	0.462	Up-Corr.	—	—	0.46	0.485	0.46	—	—
Amer holding group (AMER.CA)	0.91	Up-Corr.	—	—	0.888	0.945	0.78	—	—
Commercial International Bank (COMI.CA)	46.75	Bullish	48.80	51.60	46.65	48.80	42.30	—	—
Export development bank of Egypt (EXPA.CA)	11.31	Dn.-Corr.	—	—	11.20	11.65	9.90	—	—
<b>Holding Companies</b>									
Citadel capital (CCAP.CA)	1.236	Up-Corr.	—	—	1.21	1.31	1.09	—	—
Hermes Holding (HRHO.CA)	12.44	Bullish	13.40	14.25	12.60	13.40	11.25	—	—
Kuwaiti Holding (EKHO.CA)	1.13	Bullish	1.13√	1.19	1.06	1.15	0.96	—	—
MM group for industry & international trade (MTIE.CA)	7.61	Dn.-Corr.	—	—	7.70	8.30	7.30	—	—
Orascom financial holding (OFH.CA)	0.283	Dn.-Corr.	—	—	0.275	0.31	0.275	—	—
Pioneers holding (PIOH.CA)	5.91	Bullish	6.10√	6.85	6.00	6.30	4.80	—	—
<b>Housing &amp; Real Estate</b>									
Egyptian For Tourism Resorts (EGTS.CA)	2.23	Dn.-Corr.	—	—	2.10	2.37	1.95	—	—
Elshams housing (ELSH.CA)	15.80	Dn.-Corr.	—	—	15.60	17.50	15.00	—	—
Emaar holding (EMFD.CA)	2.49	Bullish	2.67	2.84	2.50	2.67	2.28	—	—
Heliopolis housing & development (HELL.CA)	5.58	Dn.-Corr.	—	—	5.55	5.70	4.85	—	—
Medinet Nasr for housing & Deve. (MNHD.CA)	2.99	Up-Corr.	—	—	3.00	3.25	2.90	—	—
6th. October Deve. Inv. (OCDI.CA)	17.41	Dn.-Corr.	—	—	17.30	17.90	15.70	—	—
Palm hills development Co. (PHDC.CA)	1.96	Bullish	2.03√	2.11	1.96	2.03	1.60	—	—
Talaat Mustafa group holding (TMGH.CA)	7.30	Dn.-Corr.	—	—	7.25	7.50	6.30	—	—
<b>Mining &amp; Gas</b>									
Alexandria Mineral Oils Co. (AMOC.CA)	3.60	Dn.-Corr.	—	—	3.60	3.88	3.20	—	—
Sidi Kerir Petrochemicals (SKPC.CA)	10.20	Bearish	—	—	10.25	11.10	—	—	—
<b>Textiles &amp; Clothes</b>									
Arab Co. for asset management & Deve. (ACAMD.CA)	0.621	Up-Corr.	—	—	0.60	0.645	0.60	—	—
Arab cotton ginning (ACGC.CA)	1.96	Up-Corr.	—	—	1.92	2.08	1.70	—	—
Oriental Weavers (ORWE.CA)	8.49	Dn.-Corr.	—	—	8.25	8.65	7.50	—	—
<b>Other Sectors</b>									
Egyptian Media Production City (MPRC.CA)	6.40	Dn.-Corr.	—	—	6.45	6.90	5.90	—	—
Egyptian Transport - Egytrans (ETRS.CA)	14.80	Up-Corr.	—	—	15.00	15.85	13.60	—	—
Orascom holding development (ORHD.CA)	4.80	Up-Corr.	—	—	4.80	5.00	4.80	—	—
United Arab Shipping (UASG.CA)	1.283	Dn.-Corr.	—	—	1.21	1.35	1.15	—	—

Disclaimer

- This publication has been prepared by Blom Egypt Securities for information purposes only.
- It is not intended as an offer to buy or sell or a solicitation of an offer to buy or sell the securities mentioned.
- The information & opinions in this publication were prepared by Blom Egypt Securities research department accepts no liability or legal responsibility for losses & damages incurred arising from the use of this publication or its contents.

**Blom Egypt Securities**  
Samir M. Azmi, CFTe, CETA  
Senior Technical Analyst  
samir.azmi@blomsecurities.com



**Guidelines for using BLOM daily Technical Analysis Report**

<b><u>Close:</u></b>	Is recorded as the last trade in the session.
<b><u>Trend:</u></b>	
<b>Bullish :</b>	The strategy is to buy the dips.
<b>Bearish :</b>	The strategy is to sell the rallies.
<b>Flat :</b>	The strategy is to trade the range between the triggers.
<b>Up-Corr. :</b>	A move against the major trend when it is down.
<b>Dn.-Corr. :</b>	A move against the major trend when it is up.
<b><u>Targets :</u></b>	Take some profit by reducing a portion of the position whenever a price target is been hit.
<b><u>Support :</u></b>	A level below market price (previous lows) where buyers showed strength, in a bull market buy near the support and don't sell on the resistance. A break below the Support is considered to be a bearish sign.
<b><u>Resistance :</u></b>	A level above market price (previous highs) where sellers showed strength, in a bear market sell near the resistance level and don't buy on the support. A break above the resistance is considered to be a bullish sign.
<b><u>Stop Loss :</u></b>	Must exit the current position whenever the closing price is (1% to 2%) below the stop loss and confirmed by volume.
<b><u>Triggers :</u></b>	The range between the lower trigger and the upper is used for trading, break of any of them, the move would continue in the same direction.
<b><u>Yellow rows:</u></b>	indication that the stock closed below/above support, stop-loss, or resistance but the break is not confirmed yet.

**Disclaimer**

- This publication has been prepared by Blom Egypt Securities for information purposes only.
- It is not intended as an offer to buy or sell or a solicitation of an offer to buy or sell the securities mentioned.
- The information & opinions in this publication were prepared by Blom Egypt Securities research department accepts no liability or legal responsibility for losses & damages incurred arising from the use of this publication or its contents.

**Blom Egypt Securities**  
**Samir M. Azmi, CFTe, CETA**  
**Senior Technical Analyst**  
**samir.azmi@blomsecurities.com**