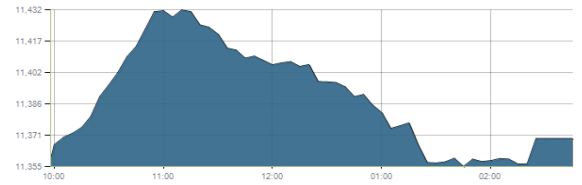


Indices intraday trends

EGX 30

مؤشر EGX 30  
اليوم - 23/11/2021

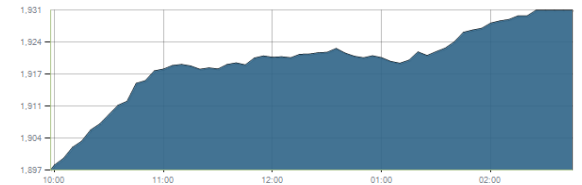


Key Levels

Support 1	11320-11200	Resistance 1	11675
Support 2	11100	Resistance 2	12250

EGX 50 EWI

مؤشر EGX 50 EWI  
اليوم - 23/11/2021

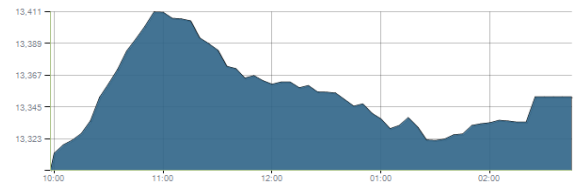


Key Levels

Close		1931.10	
Support 1	1890	Resistance 1	1970
Support 2	1800	Resistance 2	2060

EGX 30 capped

مؤشر EGX 30 Capped  
اليوم - 23/11/2021



Key Levels

Close		13352.31	
Support 1	13330	Resistance 1	13470
Support 2	12850	Resistance 2	13780

Market Commentary:

The EGX30 remained narrowly flat closing slightly positive above our mentioned support zone leaving levels unchanged and so for our outlook. Volumes remained weak in any upward moves keeping the market risk elevated. Trading should be very selective and conservative keeping close stops placed and respected to reduce market risk. Notice that the mentioned support zone should be respected in any decline as any violation to it will indicate that bears are in control further decline will follow.

Close	11369.22	Trend	Dn.-Corr.
Pre. Close	11359.03	Target 1	---
Change	↑ 10.19 ( 0.09% )	Target 2	---
Day's range	11351.89 — 11432.25	Stop-loss	10680
52week's high	11675.69	52week's low	9769.18.18

Disclaimer

- This publication has been prepared by Blom Egypt Securities for information purposes only.
- It is not intended as an offer to buy or sell or a solicitation of an offer to buy or sell the securities mentioned.
- The information & opinions in this publication were prepared by Blom Egypt Securities research department accepts no liability or legal responsibility for losses & damages incurred arising from the use of this publication or its contents.

**Blom Egypt Securities**  
Samir M. Azmi, CFTe, CETA  
Senior Technical Analyst  
samir.azmi@blomsecurities.com



**Commercial international bank (COMI.CA):**

Prices witnessed another attempt to restore the support level 52.80 but selling pressure kept the close below slightly negative.

Levels are still the same and so for our outlook, short term trend now is considered flat within 52.80 & 51.60 where we may conservatively trade.

Support levels: 51.60, 50.00  
Resistance levels: 52.80, 57.70

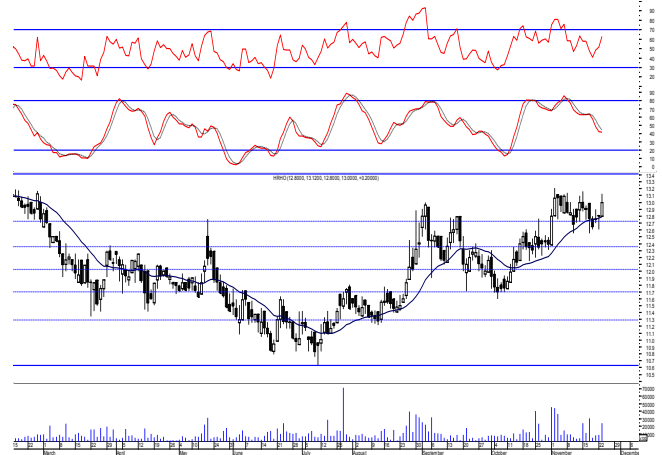


**Hermes Holding (HRHO.CA):**

Prices closed slightly negative after quiet trading performance keeping levels the same and so for our outlook.

Existing positions are advised to hold keeping stops placed and respected below 12.10 as any decline below will give back the hand to selling party.

Support levels: (12-75-12.60), 12.10  
Resistance levels: 13.40, 14.25



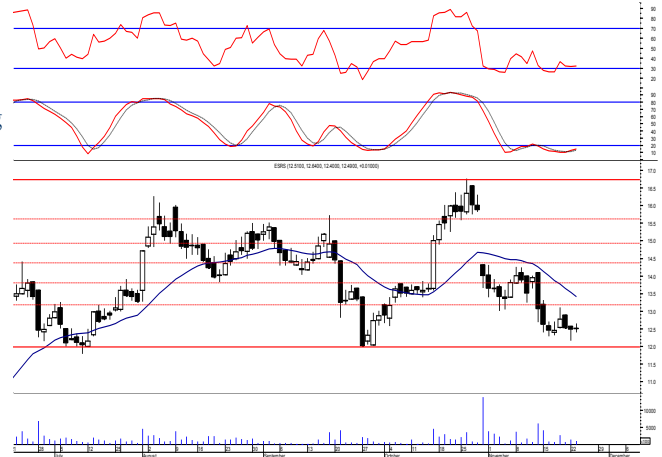
**El-Ezz steel rebar's' (ESRS.CA):**

Prices remained narrowly flat after quiet trading performance overwhelmed most of the day closing slightly positive leaving everything in place.

As we said, bears gained back the near term technical advantage and therefore the upside potential will be invalid so stay heads up.

We recommend staying on cash till a confirmed buy signal is clearly evident.

Support levels: 12.00, 10.55  
Resistance levels: 13.20, 13.80



**Disclaimer**

- This publication has been prepared by Blom Egypt Securities for information purposes only.
- It is not intended as an offer to buy or sell or a solicitation of an offer to buy or sell the securities mentioned.
- The information & opinions in this publication were prepared by Blom Egypt Securities research department accepts no liability or legal responsibility for losses & damages incurred arising from the use of this publication or its contents.

**Blom Egypt Securities**  
**Samir M. Azmi, CFTe, CETA**  
**Senior Technical Analyst**  
**samir.azmi@blomsecurities.com**



Most active Stocks

Daily Technical Analysis Report

24 Nov, 2021

Stock Name (Reuters' Code)	Close	Trend	T1	T2	Support	Resistance	SL	Triggers	
								Lower	Upper
<b>Building Materials &amp; Construction</b>									
Arabian cement (ARCC.CA)	3.90	Up-Corr.	—	—	3.77	4.10	3.20	—	—
El Ezz Steel Rebar's (ESRS.CA)	12.49	Bearish	—	—	12.00	13.20	—	—	—
GB auto (AUTO.CA)	3.70	Bearish	—	—	3.50	3.75	—	—	—
Orascom construction (ORAS.CA)	70.00	Dn.-Corr.	—	—	68.50	71.70	68.50	—	—
South Valley Cement (SVCE.CA)	1.301	Bearish	—	—	1.15	1.325	—	—	—
Elsweddy Cables (SWDY.CA)	8.22	UP-Corr.	—	—	7.90	8.35	7.90	—	—
Upper Egypt general contracting (UEGC.CA)	0.627	Up-Corr.	—	—	0.61	0.655	0.57	—	—
<b>Chemicals</b>									
Abu-Qir fertilizers (ABUK.CA)	19.20	Dn.-Corr.	—	—	19.20	19.85	19.20	—	—
Egyptian Financial & Indust. (EFIC.CA)	12.40	Bearish	—	—	12.10	12.65	—	—	—
Egyptian chemical industries-Kima (EGCH.CA)	3.19	Up-Corr.	—	—	3.00	3.35	3.00	—	—
<b>Communications</b>									
Fawry for banking tech. & electronic payment (FWRY.CA)	12.40	Bearish	—	—	12.30	13.40	—	—	—
Orascom investment holding (OIH.CA)	0.214	Bearish	—	—	0.195	0.216	—	—	—
Telecom Egypt (ETEL.CA)	14.57	Dn.-Corr.	—	—	13.80	14.80	12.90	—	—
<b>Financial Services</b>									
Abu Dhabi International Bank (ADIB.CA)	13.80	Up-Corr.	—	—	12.60	14.15	12.60	—	—
Arabian for investments & development (AIH.CA)	0.339	Bearish	—	—	0.31	0.37	—	—	—
Amer holding group (AMER.CA)	0.938	Bearish	—	—	0.905	0.96	—	—	—
Commercial International Bank (COMI.CA)	52.20	Dn.-Corr.	—	—	51.60	52.80	46.60	—	—
Export development bank of Egypt (EXPA.CA)	8.89	Bearish	—	—	8.10	9.20	—	—	—
<b>Holding Companies</b>									
Citadel capital (CCAP.CA)	1.155	Up-Corr.	—	—	1.09	1.17	1.09	—	—
Hermes Holding (HRHO.CA)	13.00	Dn.-Corr.	—	—	12.60	13.40	11.25	—	—
Kuwaiti Holding (EKHO.CA)	1.415	Bullish	1.59	1.75	1.39	1.59	1.22	—	—
MM group for industry & international trade (MTIE.CA)	5.77	Bearish	—	—	5.60	5.90	—	—	—
Orascom financial holding (OFH.CA)	0.209	Bearish	—	—	0.195	0.23	—	—	—
<b>Housing &amp; Real Estate</b>									
Egyptian For Tourism Resorts (EGTS.CA)	1.285	Bearish	—	—	1.21	1.47	—	—	—
Elshams housing (ELSH.CA)	7.89	Up-Corr.	—	—	7.70	8.30	5.40	—	—
Emaar holding (EMFD.CA)	2.54	Dn.-Corr.	—	—	2.50	2.645	2.28	—	—
Heliopolis housing & development (HELL.CA)	4.19	Bearish	—	—	4.10	4.60	—	—	—
Medinet Nasr for housing & Deve. (MNHD.CA)	2.31	Up-Corr.	—	—	2.16	2.40	2.16	—	—
6th. October Deve. Inv. (OCDI.CA)	19.30	Bullish	19.60	21.50	18.80	19.60	16.90	—	—
Palm hills development Co. (PHDC.CA)	1.794	Up-Corr.	—	—	1.72	1.83	1.72	—	—
Talaat Mustafa group holding (TMGH.CA)	7.68	Dn.-Corr.	—	—	7.50	8.00	6.90	—	—
<b>Mining &amp; Gas</b>									
Alexandria Mineral Oils Co. (AMOC.CA)	3.74	Dn.-Corr.	—	—	3.55	3.75	3.55	—	—
Sidi Kerir Petrochemicals (SKPC.CA)	6.70	Bearish	—	—	6.30	6.80	—	—	—
<b>Textiles &amp; Clothes</b>									
Arab Co. for asset management & Deve. (ACAMD.CA)	0.404	Bearish	—	—	0.35	0.43	—	—	—
Arab cotton ginning (ACGC.CA)	1.622	Up-Corr.	—	—	1.525	1.625	1.455	—	—
Oriental Weavers (ORWE.CA)	8.44	Dn.-Corr.	—	—	8.05	8.55	7.50	—	—
<b>Other Sectors</b>									
Egyptian Media Production City (MPRC.CA)	4.43	Bearish	—	—	4.05	4.45	—	—	—
Egyptian Transport - Egytrans (ETRS.CA)	11.39	Up-Corr.	—	—	11.25	11.70	9.80	—	—
Orascom holding development (ORHD.CA)	5.60	Up-Corr.	—	—	5.10	5.60	4.64	—	—
United Arab Shipping (UASG.CA)	0.892	Bearish	—	—	0.80	0.945	—	—	—

Disclaimer

- This publication has been prepared by Blom Egypt Securities for information purposes only.
- It is not intended as an offer to buy or sell or a solicitation of an offer to buy or sell the securities mentioned.
- The information & opinions in this publication were prepared by Blom Egypt Securities research department accepts no liability or legal responsibility for losses & damages incurred arising from the use of this publication or its contents.

**Blom Egypt Securities**  
Samir M. Azmi, CFTe, CETA  
Senior Technical Analyst  
samir.azmi@blomsecurities.com



**Guidelines for using BLOM daily Technical Analysis Report**

<b><u>Close:</u></b>	Is recorded as the last trade in the session.
<b><u>Trend:</u></b>	
<b>Bullish :</b>	The strategy is to buy the dips.
<b>Bearish :</b>	The strategy is to sell the rallies.
<b>Flat :</b>	The strategy is to trade the range between the triggers.
<b>Up-Corr. :</b>	A move against the major trend when it is down.
<b>Dn.-Corr. :</b>	A move against the major trend when it is up.
<b><u>Targets :</u></b>	Take some profit by reducing a portion of the position whenever a price target is been hit.
<b><u>Support :</u></b>	A level below market price (previous lows) where buyers showed strength, in a bull market buy near the support and don't sell on the resistance. A break below the Support is considered to be a bearish sign.
<b><u>Resistance :</u></b>	A level above market price (previous highs) where sellers showed strength, in a bear market sell near the resistance level and don't buy on the support. A break above the resistance is considered to be a bullish sign.
<b><u>Stop Loss :</u></b>	Must exit the current position whenever the closing price is (1% to 2%) below the stop loss and confirmed by volume.
<b><u>Triggers :</u></b>	The range between the lower trigger and the upper is used for trading, break of any of them, the move would continue in the same direction.
<b><u>Yellow rows:</u></b>	indication that the stock closed below/above support, stop-loss, or resistance but the break is not confirmed yet.

**Disclaimer**

- This publication has been prepared by Blom Egypt Securities for information purposes only.
- It is not intended as an offer to buy or sell or a solicitation of an offer to buy or sell the securities mentioned.
- The information & opinions in this publication were prepared by Blom Egypt Securities research department accepts no liability or legal responsibility for losses & damages incurred arising from the use of this publication or its contents.

**Blom Egypt Securities**  
**Samir M. Azmi, CFTe, CETA**  
**Senior Technical Analyst**  
**samir.azmi@blomsecurities.com**