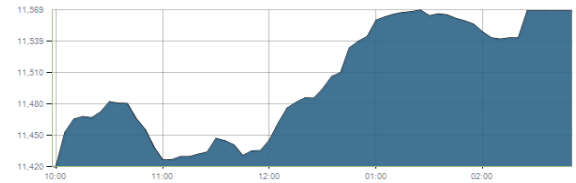




Indices intraday trends

EGX 30

مؤشر EGX 30
اليوم - 01/11/2021

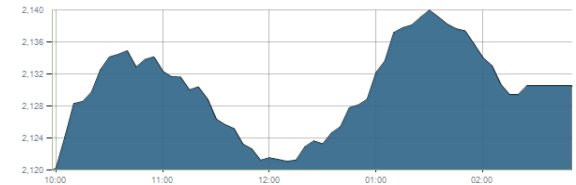


Key Levels

Support 1	11320-11200	Resistance 1	11675
Support 2	11100	Resistance 2	12250

EGX 50 EWI

مؤشر EGX 50 EWI
اليوم - 01/11/2021

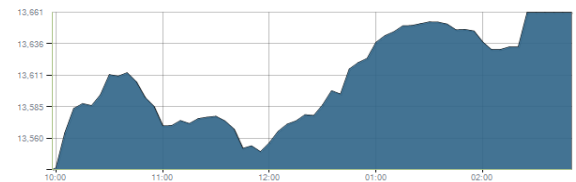


Key Levels

Close		2130.31	
Support 1	2120	Resistance 1	2150
Support 2	2060	Resistance 2	2230

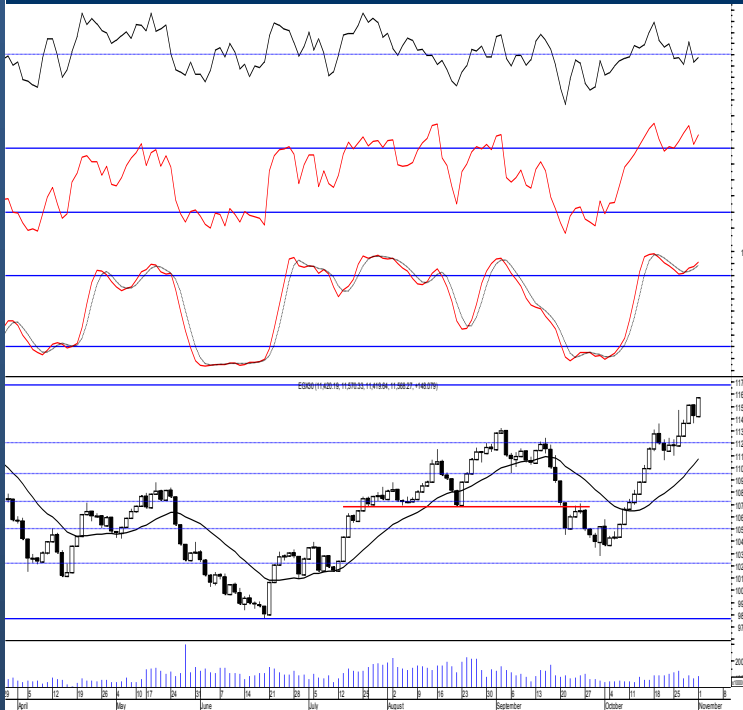
EGX 30 capped

مؤشر EGX 30 Capped
اليوم - 01/11/2021



Key Levels

Close		13661.35	
Support 1	13470	Resistance 1	13820
Support 2	13330	Resistance 2	14100



Market Commentary:

The EGX30 managed to contain Sunday's decline and closed on the day's high hitting a new 8 months high. The rally was boosted by increasing trading volume indicating consistency therefore further climbing to the major resistance level 11675 is confirmed bearing in mind that this level represents major resistance level.

Trading should be very selective and conservative keeping close stops placed and respected to reduce market risk.

Notice that the mentioned support zone should be respected in any decline as any violation to it will indicate that the previous breakout was false and yet further decline will follow.

Close	11568.27	Trend	Bullish
Pre. Close	11420.19	Target 1	11675
Change	↑ 148.08 (1.30%)	Target 2	12250
Day's range	11419.64 — 11570.33	Stop-loss	10680
52week's high	11675.69	52week's low	9769.18.18

Disclaimer

- This publication has been prepared by Blom Egypt Securities for information purposes only.
- It is not intended as an offer to buy or sell or a solicitation of an offer to buy or sell the securities mentioned.
- The information & opinions in this publication were prepared by Blom Egypt Securities research department accepts no liability or legal responsibility for losses & damages incurred arising from the use of this publication or its contents.

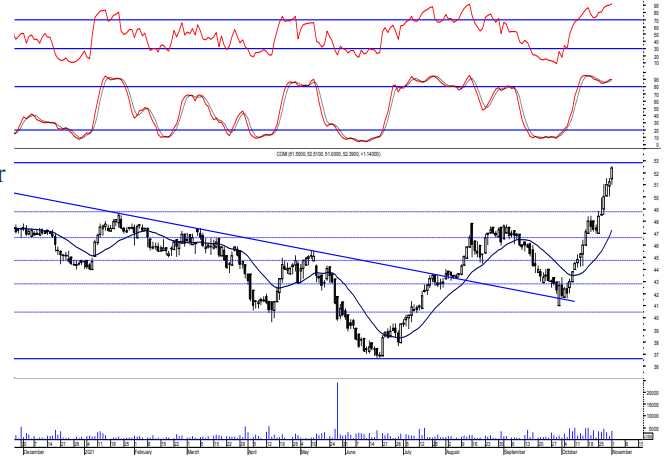
Blom Egypt Securities
Samir M. Azmi, CFTe, CETA
Senior Technical Analyst
samir.azmi@blomsecurities.com



Commercial international bank (COMI.CA):

Prices soared higher hitting our target and resistance level 51.60 closing above turning it into support. The rally extended approaching our coming resistance level 52.80 where we should watch carefully as it also represent our major resistance level. Trading partially on the mentioned levels is recommended till a clear and confirmed breakout is evident.

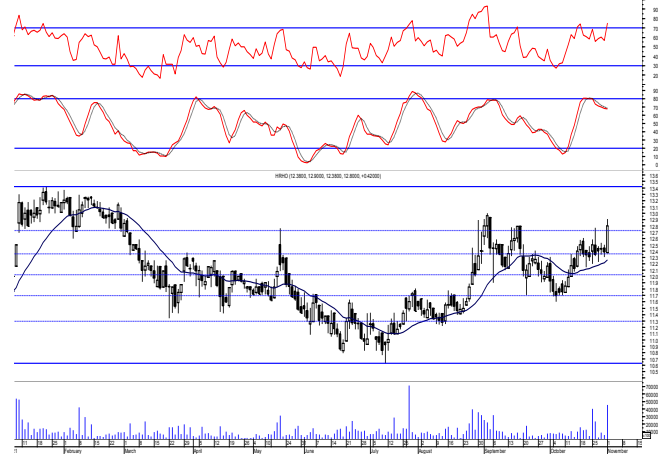
Support levels: 51.60, 49.55
Resistance levels: 52.80, 57.70



Hermes Holding (HRHO.CA):

Prices witnessed an upward move reaching our mentioned resistance zone closing slightly above. 2nd day close above is needed to confirm the breakout where as we said will lead to further climbing to 13.40. Existing positions are advised to hold keeping stops placed and respected below 11.25 as any decline below will give back the hand to selling party.

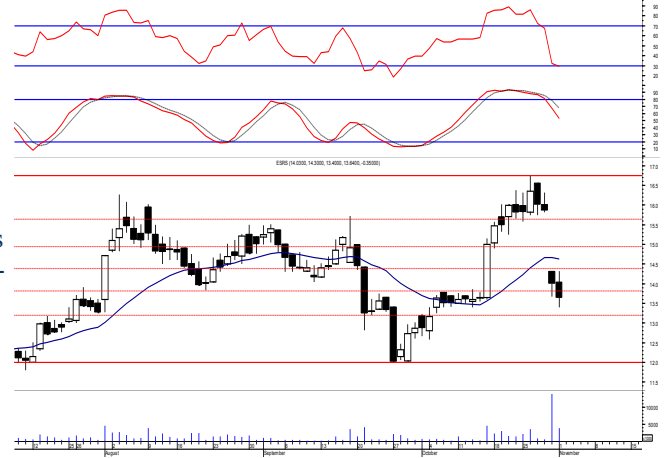
Support levels: 12.10, 11.70
Resistance levels: (12.60-12.75), 13.40



El-Ezz steel rebar's' (ESRS.CA):

Prices witnessed another downward move closing slightly below our support level 13.80. 2nd day close below will confirm violation which will lead to further decline to the next support level 13.20 where we should watch carefully as it represents our short term stop loss level. We still believe that current levels represents a good buying opportunity as long as prices holds above the support level 13.80 expecting rebounding from back to the old price range.

Support levels: 13.80, 13.20
Resistance levels: 14.50, 15.20



Disclaimer

- This publication has been prepared by Blom Egypt Securities for information purposes only.
- It is not intended as an offer to buy or sell or a solicitation of an offer to buy or sell the securities mentioned.
- The information & opinions in this publication were prepared by Blom Egypt Securities research department accepts no liability or legal responsibility for losses & damages incurred arising from the use of this publication or its contents.

Blom Egypt Securities
Samir M. Azmi, CFTe, CETA
Senior Technical Analyst
samir.azmi@blomsecurities.com



Most active Stocks

Daily Technical Analysis Report

2 Nov, 2021

Stock Name (Reuters' Code)	Close	Trend	T1	T2	Support	Resistance	SL	Triggers	
								Lower	Upper
Building Materials & Construction									
Arabian cement (ARCC.CA)	3.72	Up-Corr.	—	—	3.45	3.80	3.20	—	—
El Ezz Steel Rebar's (ESRS.CA)	13.64	Dn.-Corr.	—	—	13.80	14.50	13.20	—	—
GB auto (AUTO.CA)	4.13	Dn.-Corr.	—	—	3.95	4.22	3.75	—	—
Orascom construction (ORAS.CA)	72.81	Dn.-Corr.	—	—	71.00	74.50	68.50	—	—
South Valley Cement (SVCE.CA)	1.565	Bearish	—	—	1.50	1.70	—	—	—
Elsweddy Cables (SWDY.CA)	8.60	UP-Corr.	—	—	8.35	8.85	7.90	—	—
Upper Egypt general contracting (UEGC.CA)	0.661	Up-Corr.	—	—	0.65	0.69	0.57	—	—
Chemicals									
Abu-Qir fertilizers (ABUK.CA)	19.99	Dn.-Corr.	—	—	19.85	20.50	19.20	—	—
Egyptian Financial & Indust. (EFIC.CA)	12.55	Up-Corr.	—	—	12.60	13.50	12.10	—	—
Egyptian chemical industries-Kima (EGCH.CA)	3.31	Bearish	—	—	3.00	3.35	—	—	—
Communications									
Fawry for banking tech. & electronic payment (FWRY.CA)	14.75	Up-Corr.	—	—	13.30	14.90	14.90	—	—
Orascom investment holding (OIH.CA)	0.247	Dn.-Corr.	—	—	0.215	0.25	0.215	—	—
Telecom Egypt (ETEL.CA)	13.69	Dn.-Corr.	—	—	12.90	13.85	12.90	—	—
Financial Services									
Abu Dhabi International Bank (ADIB.CA)	14.46	Up-Corr.	—	—	14.10	15.10	12.60	—	—
Arabian for investments & development (AIH.CA)	0.36	Bearish	—	—	0.31	0.37	—	—	—
Amer holding group (AMER.CA)	1.14	Bullish	1.14√	1.24√	1.14	1.24	0.96	—	—
Commercial International Bank (COMI.CA)	52.39	Bullish	51.60√	52.80	51.60	52.80	46.60	—	—
Export development bank of Egypt (EXPA.CA)	9.34	Up-Corr.	—	—	9.15	10.10	9.15	—	—
Holding Companies									
Citadel capital (CCAP.CA)	1.30	Up-Corr.	—	—	1.23	1.305	1.09	—	—
Hermes Holding (HRHO.CA)	12.80	Dn.-Corr.	—	—	12.10	12.75	11.25	—	—
Kuwaiti Holding (EKHO.CA)	1.372	Bullish	1.23√	1.39√	1.23	1.39	1.11	—	—
MM group for industry & international trade (MTIE.CA)	6.22	Up-Corr.	—	—	6.20	6.70	6.20	—	—
Orascom financial holding (OFH.CA)	0.229	Bearish	—	—	0.195	0.23	—	—	—
Housing & Real Estate									
Egyptian For Tourism Resorts (EGTS.CA)	1.508	Bearish	—	—	1.465	1.63	—	—	—
Elshams housing (ELSH.CA)	7.16	Up-Corr.	—	—	6.75	8.30	6.04	—	—
Emaar holding (EMFD.CA)	2.48	Dn.-Corr.	—	—	2.44	2.515	2.28	—	—
Heliopolis housing & development (HELL.CA)	4.44	Bearish	—	—	4.10	4.60	—	—	—
Medinet Nasr for housing & Deve. (MNHD.CA)	2.32	Up-Corr.	—	—	2.25	2.53	2.16	—	—
6th. October Deve. Inv. (OCDI.CA)	18.25	Flat	—	—	—	—	16.90	17.90	19.25
Palm hills development Co. (PHDC.CA)	1.901	Dn.-Corr.	—	—	1.90	1.96	1.73	—	—
Talaat Mustafa group holding (TMGH.CA)	7.55	Dn.-Corr.	—	—	7.50	7.90	6.90	—	—
Mining & Gas									
Alexandria Mineral Oils Co. (AMOC.CA)	4.25	Bullish	4.40	4.80	4.00	4.40	3.55	—	—
Sidi Kerir Petrochemicals (SKPC.CA)	9.76	Up-Corr.	—	—	9.70	10.25	8.65	—	—
Textiles & Clothes									
Arab Co. for asset management & Deve. (ACAMD.CA)	0.457	Bearish	—	—	0.43	0.502	—	—	—
Arab cotton ginning (ACGC.CA)	1.61	Bearish	—	—	1.45	1.62	—	—	—
Oriental Weavers (ORWE.CA)	8.28	Dn.-Corr.	—	—	8.05	8.55	7.50	—	—
Other Sectors									
Egyptian Media Production City (MPRC.CA)	4.95	Up-Corr.	—	—	4.75	5.10	4.40	—	—
Egyptian Transport - Egytrans (ETRS.CA)	13.43	Up-Corr.	—	—	12.50	13.60	12.50	—	—
Orascom holding development (ORHD.CA)	5.40	Up-Corr.	—	—	5.30	5.55	4.64	—	—
United Arab Shipping (UASG.CA)	1.022	Bearish	—	—	0.94	1.052	—	—	—

Disclaimer

- This publication has been prepared by Blom Egypt Securities for information purposes only.
- It is not intended as an offer to buy or sell or a solicitation of an offer to buy or sell the securities mentioned.
- The information & opinions in this publication were prepared by Blom Egypt Securities research department accepts no liability or legal responsibility for losses & damages incurred arising from the use of this publication or its contents.

Blom Egypt Securities
Samir M. Azmi, CFTe, CETA
Senior Technical Analyst
samir.azmi@blomsecurities.com



Guidelines for using BLOM daily Technical Analysis Report

<u>Close:</u>	Is recorded as the last trade in the session.
<u>Trend:</u>	
Bullish :	The strategy is to buy the dips.
Bearish :	The strategy is to sell the rallies.
Flat :	The strategy is to trade the range between the triggers.
Up-Corr. :	A move against the major trend when it is down.
Dn.-Corr. :	A move against the major trend when it is up.
<u>Targets :</u>	Take some profit by reducing a portion of the position whenever a price target is been hit.
<u>Support :</u>	A level below market price (previous lows) where buyers showed strength, in a bull market buy near the support and don't sell on the resistance. A break below the Support is considered to be a bearish sign.
<u>Resistance :</u>	A level above market price (previous highs) where sellers showed strength, in a bear market sell near the resistance level and don't buy on the support. A break above the resistance is considered to be a bullish sign.
<u>Stop Loss :</u>	Must exit the current position whenever the closing price is (1% to 2%) below the stop loss and confirmed by volume.
<u>Triggers :</u>	The range between the lower trigger and the upper is used for trading, break of any of them, the move would continue in the same direction.
<u>Yellow rows:</u>	indication that the stock closed below/above support, stop-loss, or resistance but the break is not confirmed yet.

Disclaimer

- This publication has been prepared by Blom Egypt Securities for information purposes only.
- It is not intended as an offer to buy or sell or a solicitation of an offer to buy or sell the securities mentioned.
- The information & opinions in this publication were prepared by Blom Egypt Securities research department accepts no liability or legal responsibility for losses & damages incurred arising from the use of this publication or its contents.

Blom Egypt Securities
Samir M. Azmi, CFTe, CETA
Senior Technical Analyst
samir.azmi@blomsecurities.com